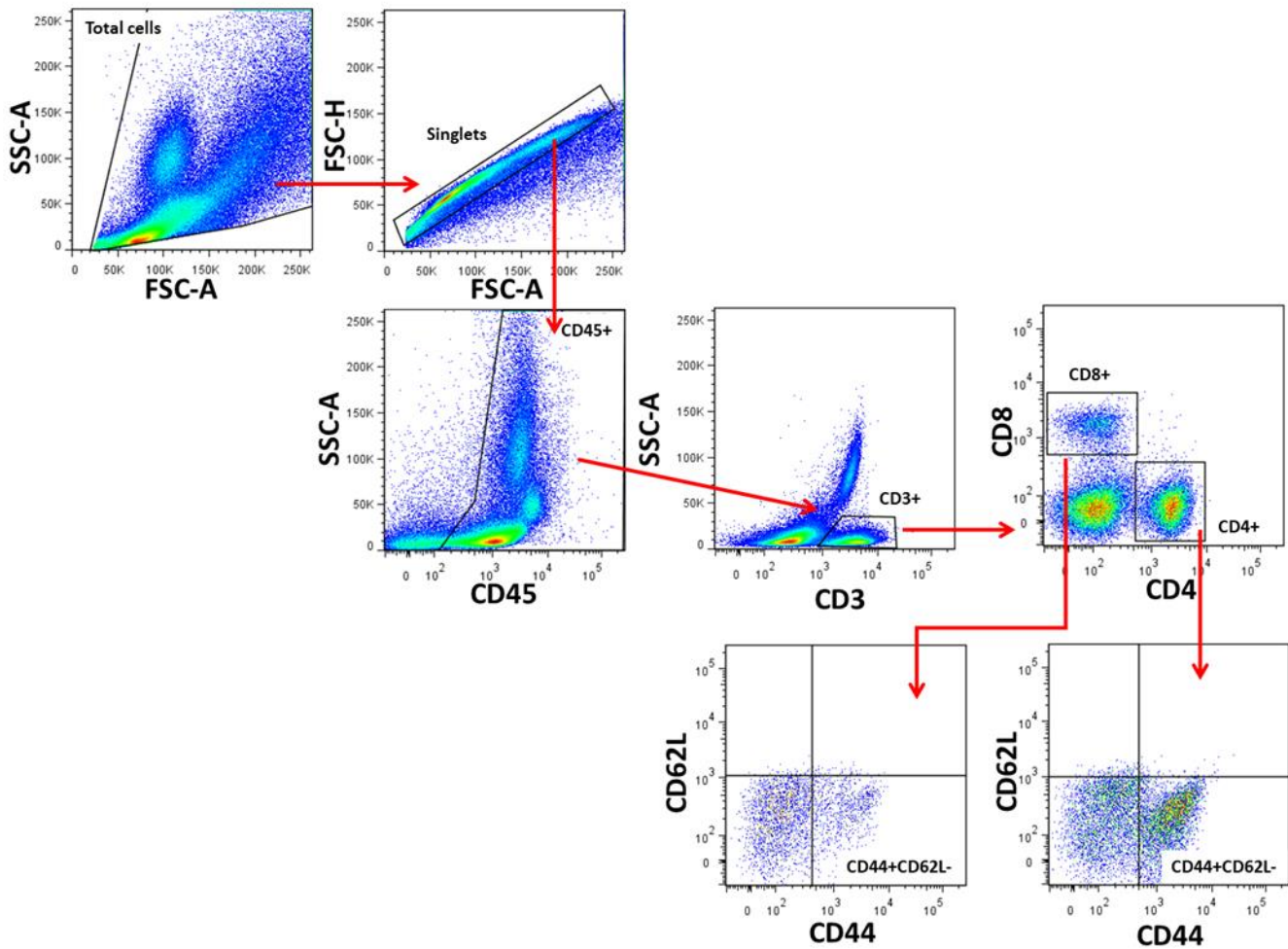
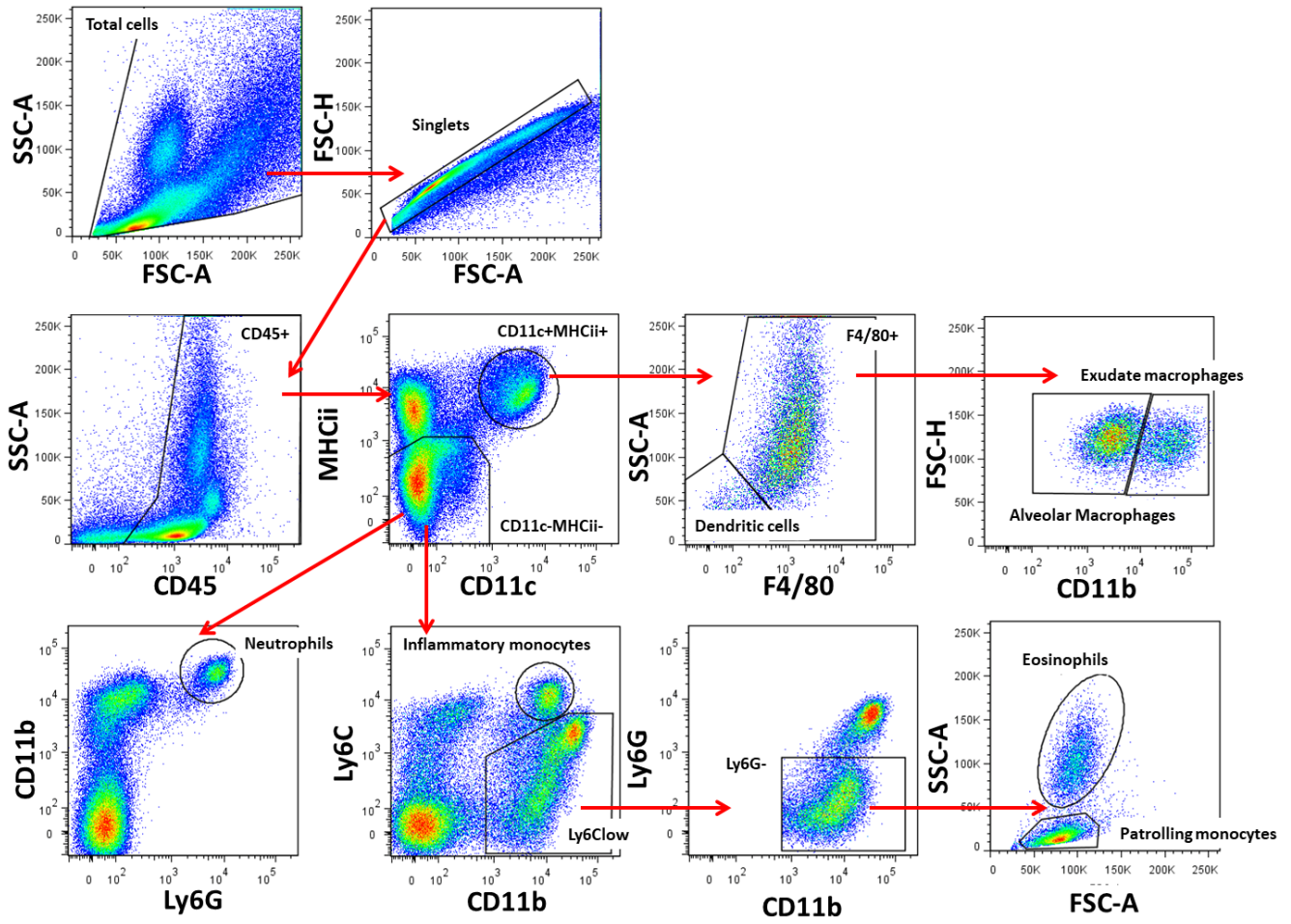


Supplemental Figure 1



Supplemental Figure 1. The flow cytometry gating strategy used to identify CD4⁺ and CD8⁺ populations, as well as activated (CD44⁺CD62L⁻) CD4⁺ and CD8⁺ T cells in the lungs of repeatedly infected WT and IL-27R α ^{-/-} mice.

Supplemental Figure 2



Supplemental Figure 2. The flow cytometry gating strategy used to identify myeloid cell populations in the lungs of repeatedly infected WT and IL-27R $\alpha^{-/-}$ mice.

Supplemental Table 1

Table 1:		
Gene	Forward Primer	Reverse Primer
<i>Gapdh</i>	5'-ATGGGAAGCTGGTCATCAAC-3'	5'-TGTGAGGGAGATGCTCAGTG-3'
<i>Il27p28</i>	5'-CTGGTACAAGCTGGTTCCTG-3'	5'-CTCCAGGGAGTGAAGGAGCT-3'
<i>Ebi3</i>	5'-CAGAGTGCAATGCCATGCTTCTC-3'	5'-CTGTGAGGTCCTGAGCTGAC-3'
<i>Tbx21</i>	5'-GGACGATCATCTGGGTCACATTGT-3'	5'-GCCAGGGAACCGCTTATATG-3'
<i>Gata3</i>	5'-CTACCGGGTTCGGATGTAAGTCG-3'	5'-GGTCACACACTCCCTGCCTTCT-3'
<i>Rorc</i>	5'-ACAACAGCAGCAAGTGATGG-3'	5'-CCTGGATTTATCCCTGCTGA-3'
<i>Foxp3</i>	5'-CCCAGGAAAGACAGC-3'	5'-TTCTCACAACCAGGCCACTTG-3'
<i>Nos2</i>	5'-CAGCTGGGCTGTACAAACCTTC-3'	5'-CATTGGAAGTGAAGCGTTTCG-3'
<i>Ifng</i>	5'-TGAACGCTACACACTGCATCTTGG-3'	5'-CGACTCCTTTTCCGCTTCTGAG-3'
<i>Tnf</i>	5'-CATCTTCTCAAATTCGAGTGACAA-3'	5'-TGGGAGTAGACAAGGTACAACCC-3'
<i>Il1b</i>	5'-CCTGCAGCTGGAGAGTGTGGAT-3'	5'-TGTGCTCTGCTTGTGAGGTGCT-3'
<i>Arg1</i>	5'-CAGAAGAATGGAAGAGTCAG-3'	5'-CAGATATGCAGGCAGGGAGTCACC-3'
<i>Chil3</i>	5'-CAGGTCTGGCAATTCTTCTGAA-3'	5'-GTCTTGCTCATGTGTGTAAGTGA-3'
<i>Rentla</i>	5'-CCAATCCAGCTAACTATCCCTCC-3'	5'-ACCCAGTAGCAGTCATCCCA-3'
<i>Mrc1</i>	5'-TCAGCTATTGGACGCGAGGCA-3'	5'-TCCGGGTTGCAAGTTGCCGT-3'

Supplemental Table 1. The sequences of primers used for gene expression.