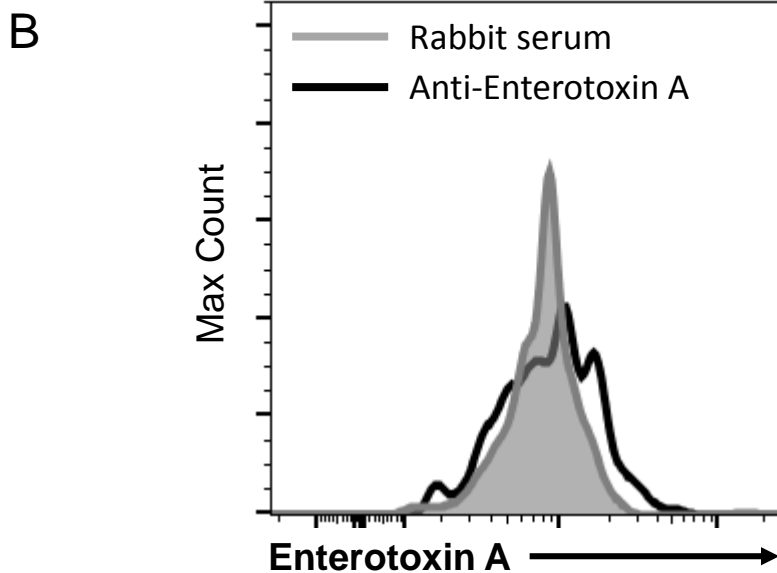
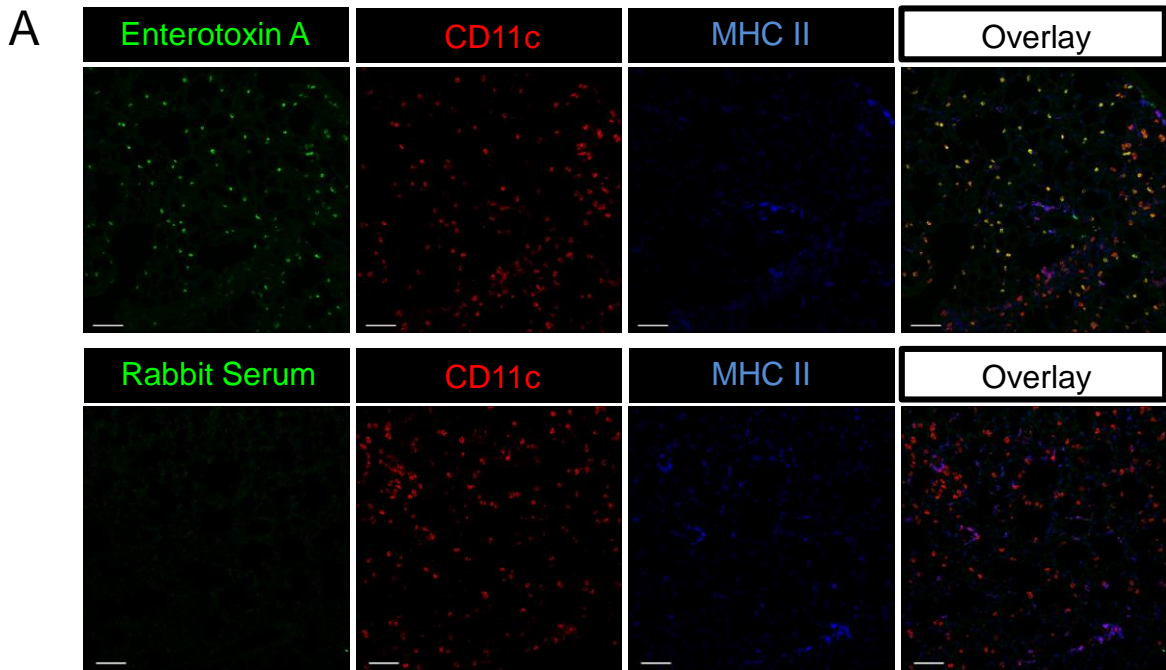


# Supplementary Figure 1



**Enterotoxin A binds specifically to AMs upon inhalation.** A) Representative confocal microscopy images of lung tissue 8 h after enterotoxin A or stained with anti-enterotoxin A (green), anti-CD11c (red), and anti-MHC II (blue), top panel and with rabbit serum (green), anti-CD11c (red), and anti-MHC II (blue). Size bar = 80  $\mu$ m. B) BAL fluid was obtained 4 h after enterotoxin A inhalation and AMs were identified as live CD45<sup>+</sup>CD11c<sup>+</sup>SIGLEC F<sup>+</sup>CD169<sup>+</sup> cells as described in figure 1D. Representative histograms showing enterotoxin A expression intracellularly + surface in BAL fluid AMs stained with anti-enterotoxin A and rabbit serum.