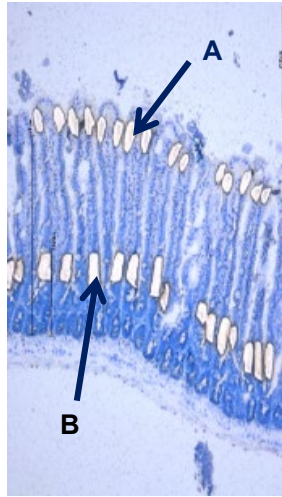
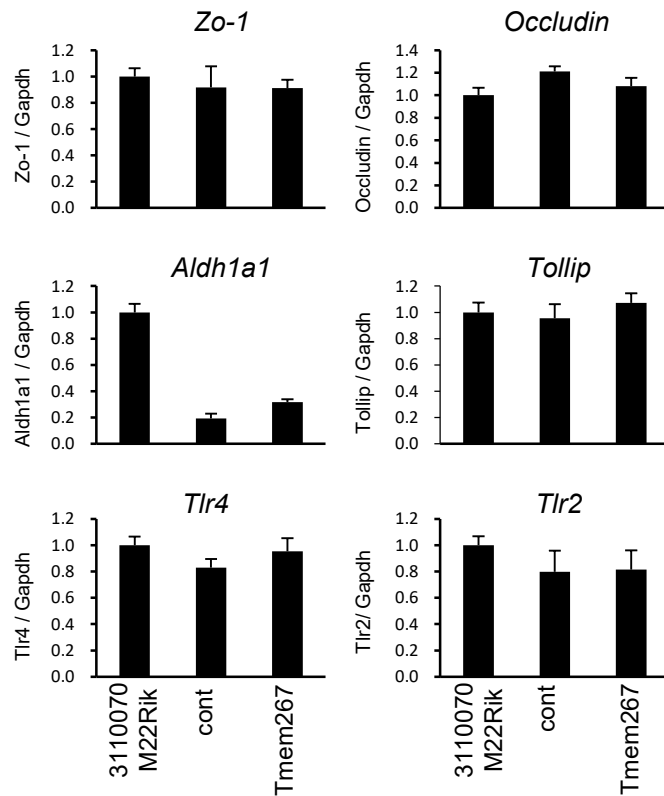


**Supplemental Table 1. Nucleotide sequences of the primers used for qPCR.**

<b>Gene</b>	<b>Primer sequence</b>
<i><math>\alpha</math>-Defensin 1</i>	Forward: 5'-AGAGGAATCGTTGAGAGATCTGG-3' Reverse: 5'-GTACTCATGTTTCGTCTTGTCCCTC-3'
<i><math>\alpha</math>-Defensin 5</i>	Forward: 5'-TGAAGAATTGTCAAAAAAGCTGA-3' Reverse: 5'-AGCCGATGGTTGTCATATCTTTG-3'
<i>Reg3<math>\beta</math></i>	Forward: 5'-GGGAATGGAGTAACAATGACGTGA-3' Reverse: 5'-AGACAAATTCGGGATGTTTGCTGT-3'
<i>Ccl25</i>	Forward: 5'-TAGGTCATCCCAGGATGGTGATG-3' Reverse: 5'-CTTCCTCATACATGCTGAGACGTT-3'
<i>Cxcl1</i>	Forward: 5'-GGAGGCTGTGTTTGTATGTCTTG-3' Reverse: 5'-TGTAACAGTCCTTTGAACGTCTCT-3'
<i>Tmem267</i>	Forward: 5'-TAGCCGACAGACTTCTTCGGTTTC-3' Reverse: 5'-TCAAAGCGGCCTGTAAAGATAGGG-3'
<i>3110070M22Rik</i>	Forward: 5'-TGCCCCACACTCAATCAGCATCA-3' Reverse: 5'-GCCCTTCAGTAAAGGAGCTCCTCT-3'
<i>Aldh1a1</i>	Forward: 5'-GCTGTGGGAATACCGTGGTT-3' Reverse: 5'-GATCCAGTGAAGGCCACCTTG-3'
<i>Gapdh</i>	Forward: 5'-TGAACGGGAAGCTCACTGG-3' Reverse: 5'-TCCACCACCCTGTTGCTGTA-3'



**Supplemental Figure 1. Epithelial tissue collection by LMD.**  
Apical (A) and basolateral (B) portions of villus epithelium were collected by LMD.



**Supplemental Figure 2. Effect of RNAi for *Tmem267* or *3110070M22Rik* on various gene expression in IECs.**

The mouse IEC line CMT-93 was transfected with *Tmem267* or *3110070MRik* siRNA expression vector. After selection with blasticidine, total RNA was prepared from the transfected cells to analyze the expression of indicated genes by qRT-PCR. Results are expressed as mean  $\pm$  SD of duplicate experiments.