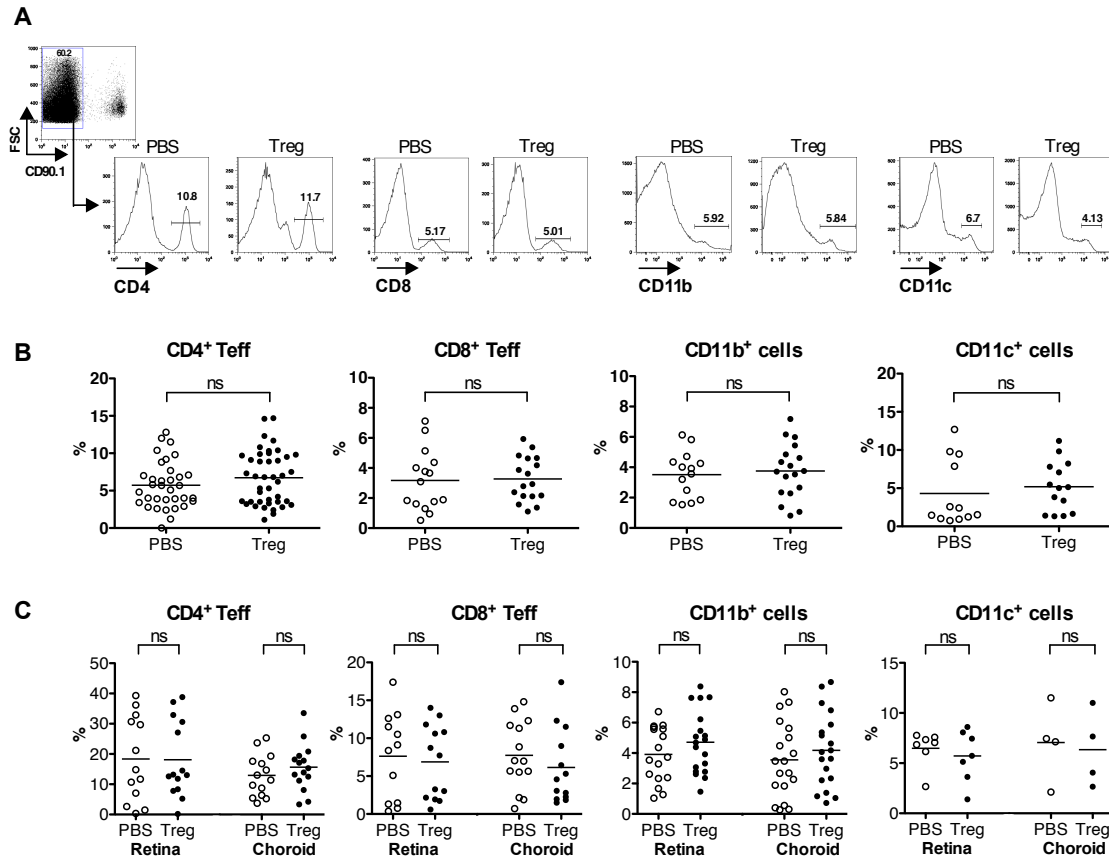
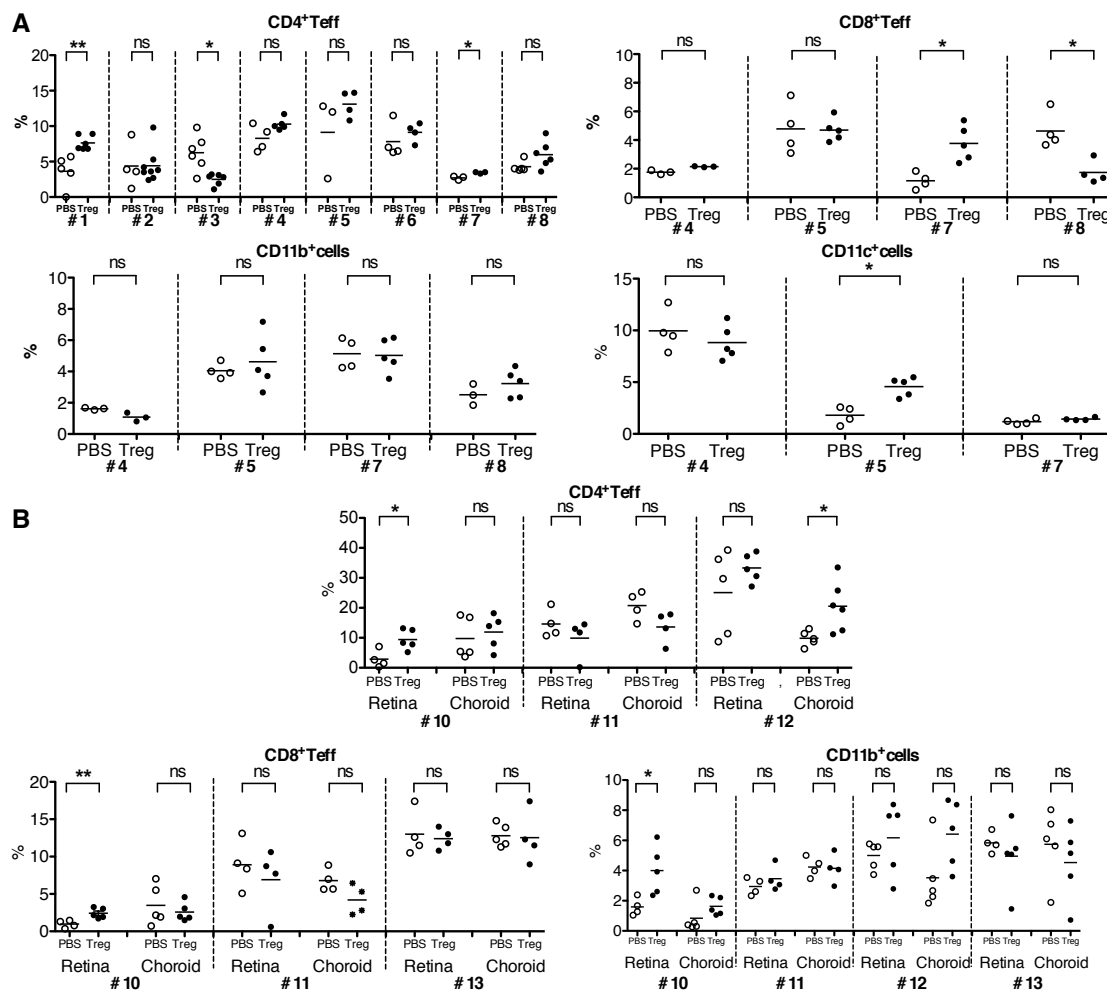


**Supplemental Fig. 1. Treg cell injection does not modify numbers of infiltrating cells in the eye.** Three days after uveitis induction, pre-activated poly-Treg cells (or PBS) were injected in the vitreous. Five or 8 days later, infiltrating cell numbers were quantified from the whole eye or from the retina or choroid compartments. As controls, similar analyzed was performed in non-manipulated mice. Each dot represents data of individual mice from 4-5 independent experiments.



**Supplemental Fig. 2. Therapeutic Treg cells administration does not modulate numbers of lymphoid and myeloid cells infiltrating the eye.** Three days after uveitis induction, pre-activated CD90.1<sup>+</sup> poly-Treg cells (or PBS) were injected in the vitreous and proportions of CD4<sup>+</sup>Foxp3<sup>-</sup>, CD8<sup>+</sup>Foxp3<sup>-</sup>, CD11b<sup>+</sup> and CD11c<sup>+</sup> cells among recipient CD90.1<sup>-</sup> cells were determined in the eyes at day 8. Representative (A) and cumulative (B) data for the analysis of the whole eye from 3-8 independent experiments and of the retina and choroid from 3-4 independent experiments (C). Each dot represents the mean of the 2 eyes of individual mice.



**Supplemental Fig. 3. Treg cell injection does not modify numbers of infiltrating cell subsets in the eye.** Three days after uveitis induction, pre-activated CD90.1<sup>+</sup> poly-Treg cells (or PBS) were injected in the vitreous and proportions of CD4<sup>+</sup>Foxp3<sup>-</sup>, CD8<sup>+</sup>Foxp3<sup>-</sup>, CD11b<sup>+</sup> and CD11c<sup>+</sup> cells among recipient CD90.1<sup>-</sup> cells were determined in the whole eyes (**A**) or in the retina and choroid compartment (**B**) at day 8. Each dot represents the mean of the 2 eyes of individual mice. Data are the same as the one shown in supplemental figure 2 and are from independent experiments (#1 to 13).