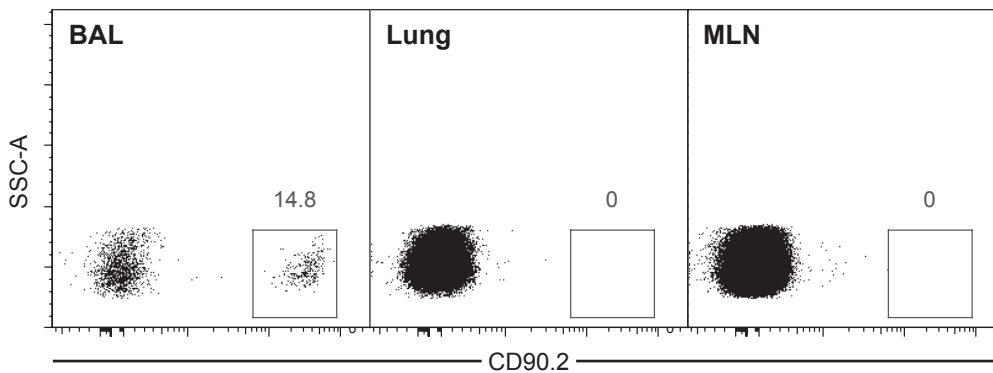


**Supplemental Figure 1**

**Supplemental Figure 1:** Airway  $T_{RM}$  cells express high levels of CXCR3. CXCR3 extracellular staining on memory CD8 T cells from the spleen and airways at day 45 post-influenza virus infection; representative of six independent experiments.



**Supplemental Figure 2**

**Supplemental Figure 2:** Intratracheally transferred CD8 T cells do not leave the airways to enter the lung nor draining lymph node. Sorted  $CD44^{hi}/CD62L^{lo}$  airway CD8  $T_{RM}$  cells from x31 WT memory mice ( $CD90.2^{+}$ ) were transferred i.t. into congenic recipients ( $CD90.1^{+}/CD90.2^{-}$ ). Mice were sacrificed two days post-i.t. transfer and CD8 T cells were stained for congenic markers to determine if the i.t. transferred cells remained in the airways or migrated into the lungs or to the mediastinal lymph node (MLN); representative of 3 independent experiments.