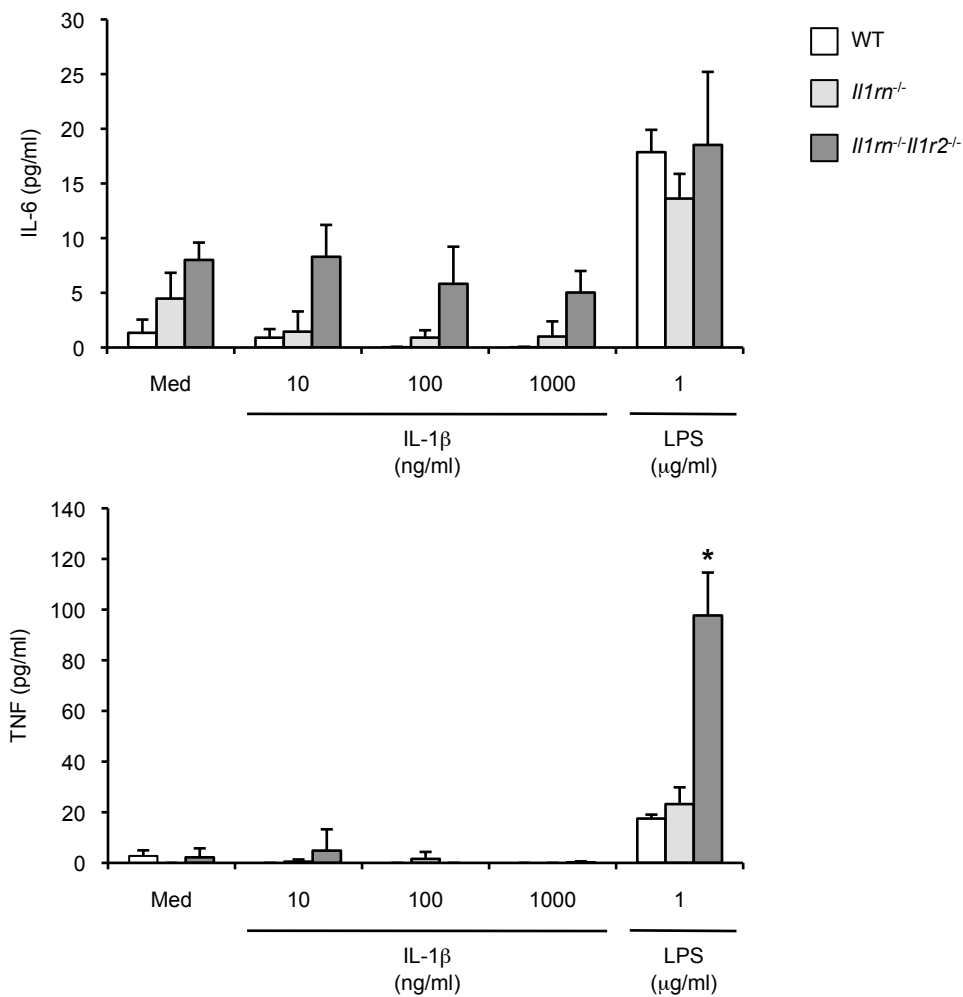


SUPPLEMENTAL FIGURE 1. FLSC preparation.

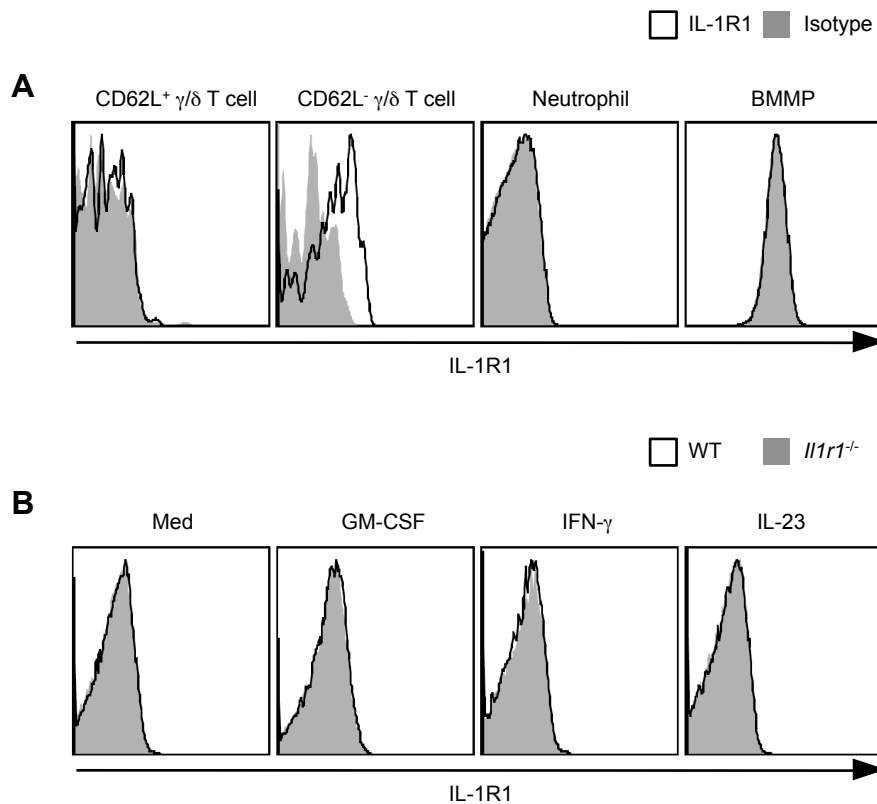
(A) Flow cytometric analysis of FLSCs. Percentage of contaminated leukocytes in FLSC preparation was less than 1%. (B) *Prg4* and *Colla1* mRNA expression in FLSCs were analyzed by quantitative PCR.

Mouse embryonic fibroblasts (MEF) and bone marrow-derived macrophages (BMMP) were used as non-synovial fibroblasts and non-fibroblast control, respectively. Data are the mean \pm s.d. of triplicates.



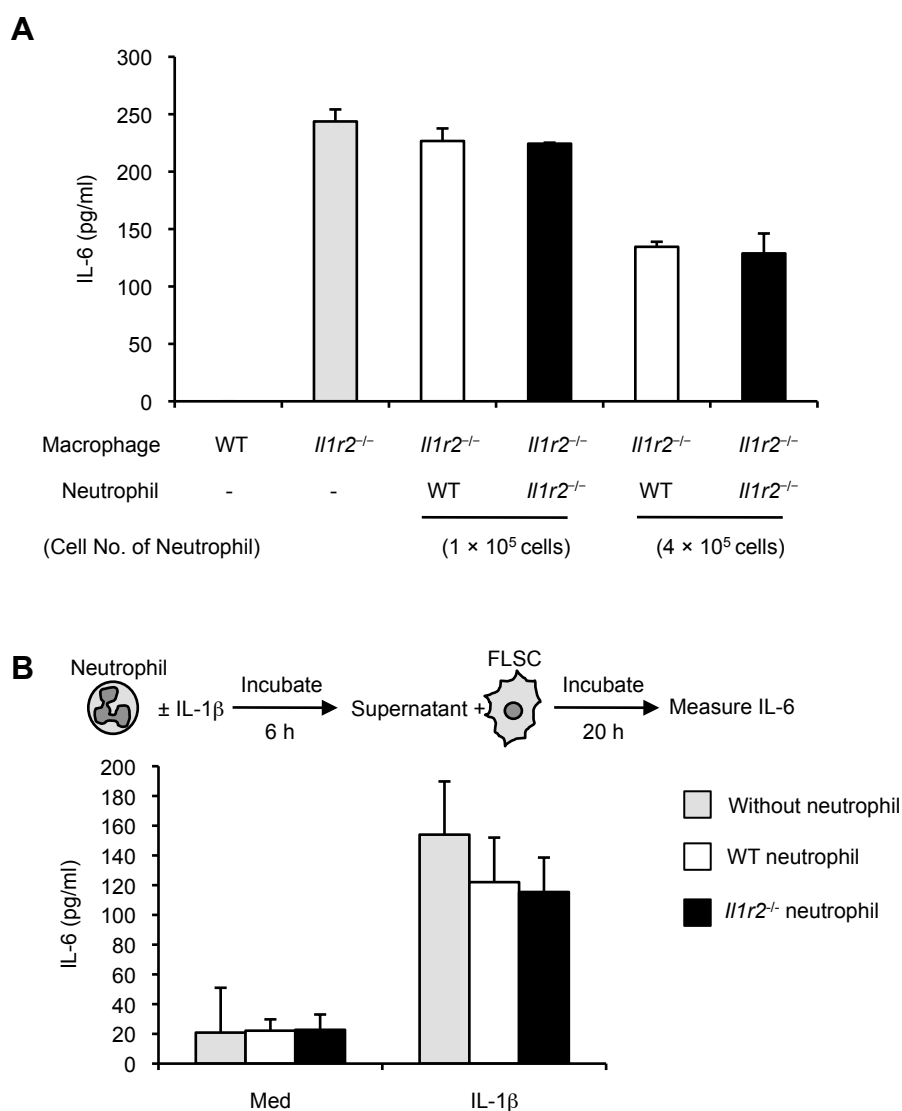
SUPPLEMENTAL FIGURE 2. *Il1rn*^{-/-}*Il1r2*^{-/-} neutrophils do not respond to IL-1.

Neutrophils from WT, *Il1rn*^{-/-} and *Il1rn*^{-/-}*Il1r2*^{-/-} mice were treated with indicated stimuli. IL-6 and TNF production were measured by ELISA at 20 h after treatment. Data are the mean ± s.d. of triplicates. **P* < 0.05 by the two-tailed unpaired student's t-test.



SUPPLEMENTAL FIGURE 3. IL-1R1 expression is not detected on neutrophil surface.

(A) $\gamma\delta$ T cells were collected from peritoneal cavity and gated on $\gamma\delta$ TCR⁺CD62L⁺ or $\gamma\delta$ TCR⁺CD62L⁻. Neutrophils were collected from bone marrow and gated on Ly6C^{int}Ly6G⁺. BMMPs were differentiated from BMC and gated on F4/80⁺. These cells were stained with PE-conjugated anti-IL-1R1 antibody or isotype control, followed by biotin-conjugated anti-PE antibody and PE-conjugated streptavidin for enhancement of fluorescence intensity. (B) BMCs were stimulated with 10 ng/ml GM-CSF, 20 ng/ml IFN- γ or 10 ng/ml IL-23 for 24 h. Then, cells were prepared for flowcytometry. Histograms show IL-1R1 expression in neutrophils gated on Ly6G⁺.



SUPPLEMENTAL FIGURE 4. Neutrophils do not neutralize IL-1 activity.

(A) BMMPs were co-cultured with indicated number of neutrophils and stimulated with 10 ng/ml IL-1 β . The levels of IL-6 in supernatant were measured by ELISA. (B) Neutrophils (2×10^6) were cultured with 5 pg/ml IL-1 β for 6 h. Then, the supernatant was collected for subsequent stimulation of FLSCs. The levels of IL-6 in supernatant were measured by ELISA. Data are the mean \pm s.d. of triplicates.