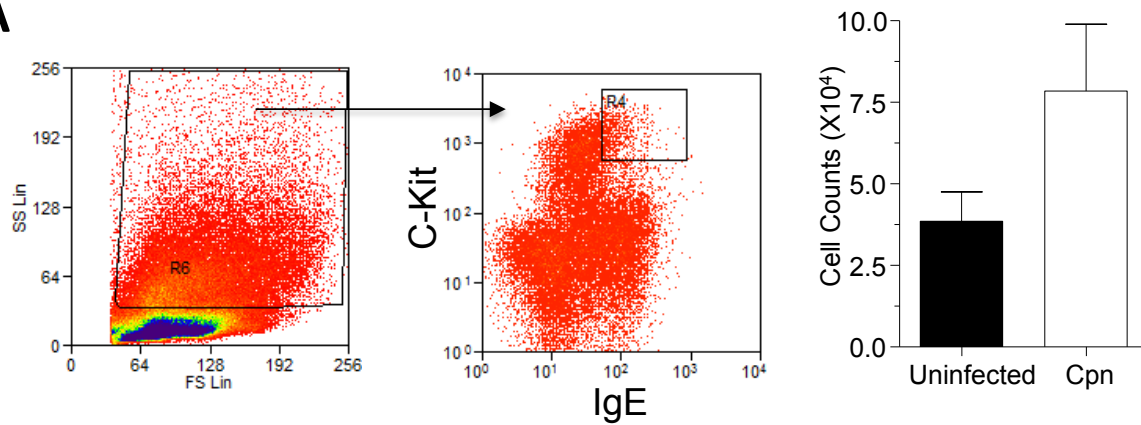
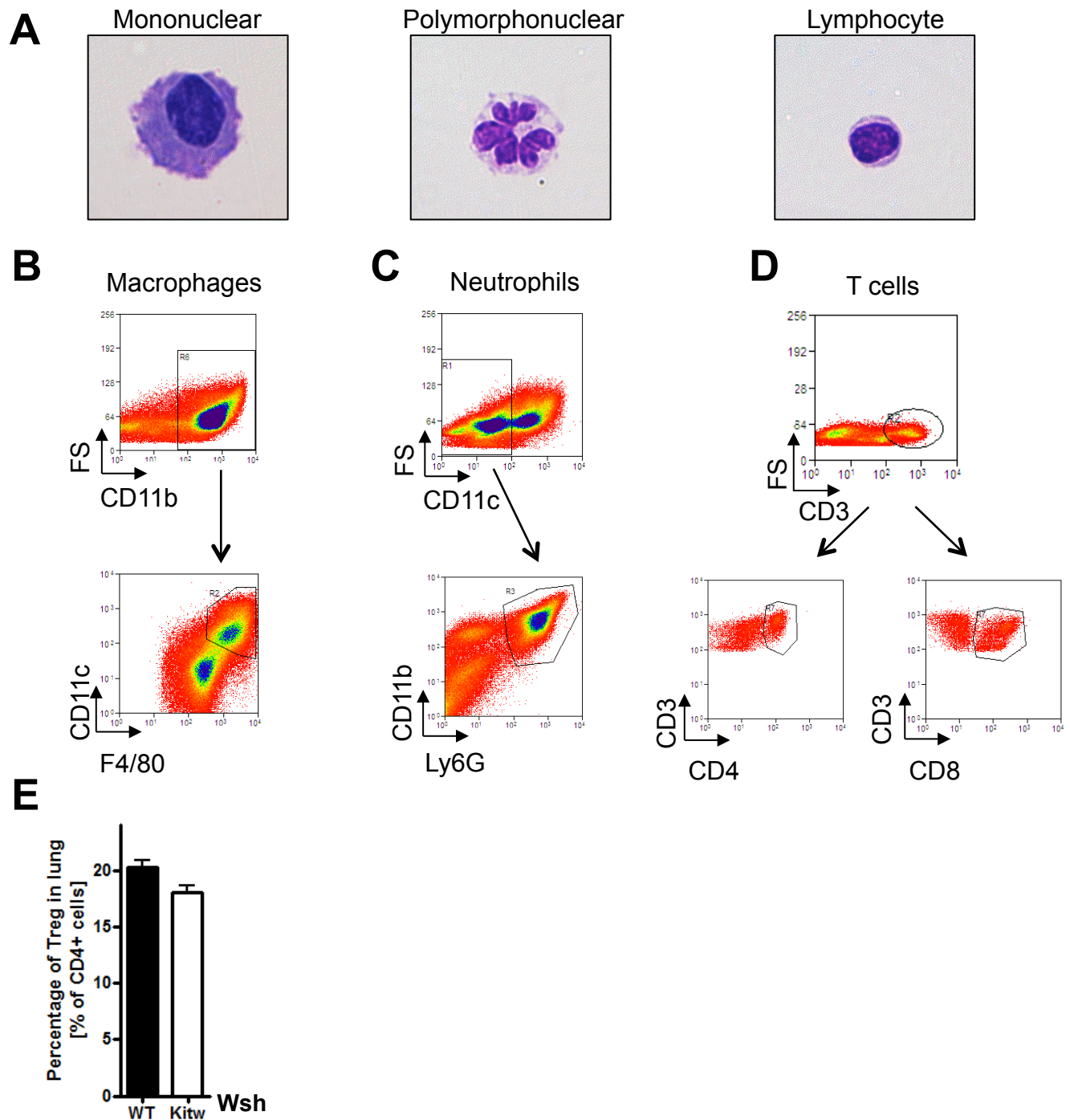
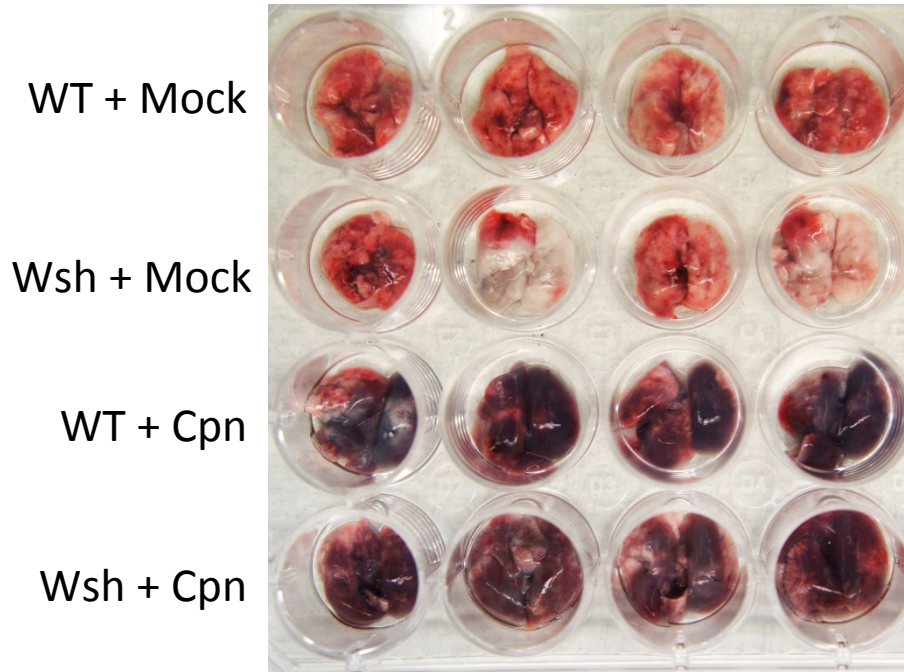
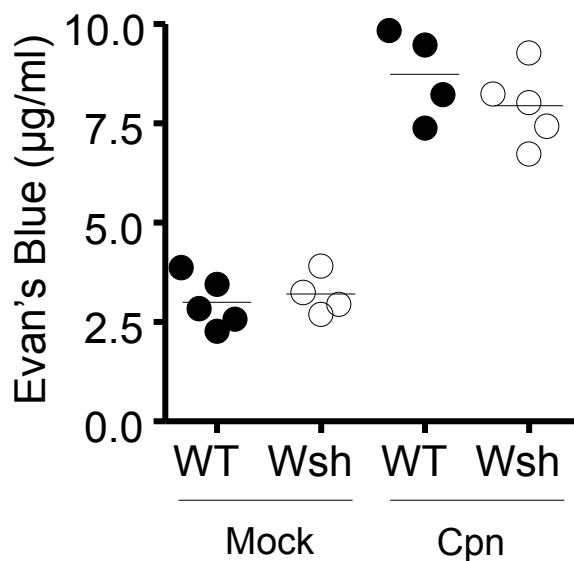
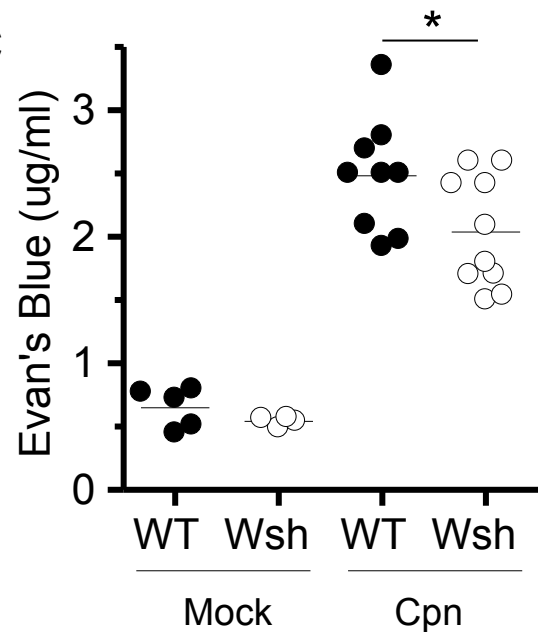


**A**

**Supplementary Figure 1. Mast cells in WT mice.** Single Lung cells were prepared as described in Material and Methods. A) Mast cells were identified as side scatter high and double positive for c-kit and IgE on the surface (n=5). Data are mean  $\pm$  SD. Significance of differences was determined by the Mann-Whitney test.



**Supplementary Figure 2. Giemsa-Wright staining. Flow cytometry gating schemes for lung immune cells. Treg numbers in *Wsh* mice.** A) BALF cells were stained using Giemsa-Wright staining. Representative images are shown at 400x. B-D) Single Lung cells were prepared as described in Material and Methods. B) Alveolar macrophages were gated as CD11b<sup>+</sup> CD11c<sup>+</sup> F4/80<sup>+</sup>. C) Neutrophils were gates as CD11c<sup>-</sup> CD11b<sup>+</sup> Ly6G<sup>+</sup>. D) T-cells were gated as CD3<sup>+</sup> and either CD4<sup>+</sup> or CD8<sup>+</sup>. E) Cells were stained intracellular Foxp3 following cell surface CD4 and CD25 staining and analyzed by flow cytometry. n=5. Data are mean  $\pm$ SD. Significance of differences was determined by the Mann-Whitney test.

**A****B****C**

**Supplementary Figure 3. Vascular permeability was not altered in Wsh during Cpn infection in the lung, but is in the BALF.** (A) Mice were infected with Cpn ( $2 \times 10^6$  IFU). Days 5 after infection, 25 mg/kg Evans Blue was injected i.v. 2 hrs before lung harvest. (B) Whole Lungs were homogenized with 1 mL PBS, then were centrifuged. The pellets were incubated with 500 mL formamide at  $60^\circ$  for 18 hrs. The supernatant was measured at absorbencies 620 nm – 740 nm.  $n=4\sim 5$ . (C) Bronchoalveolar lavage was performed and Evan's blue content was measured as above. Shown is the pooled data from two individual experiments. \* $p < 0.05$ , unpaired Student's t-test.