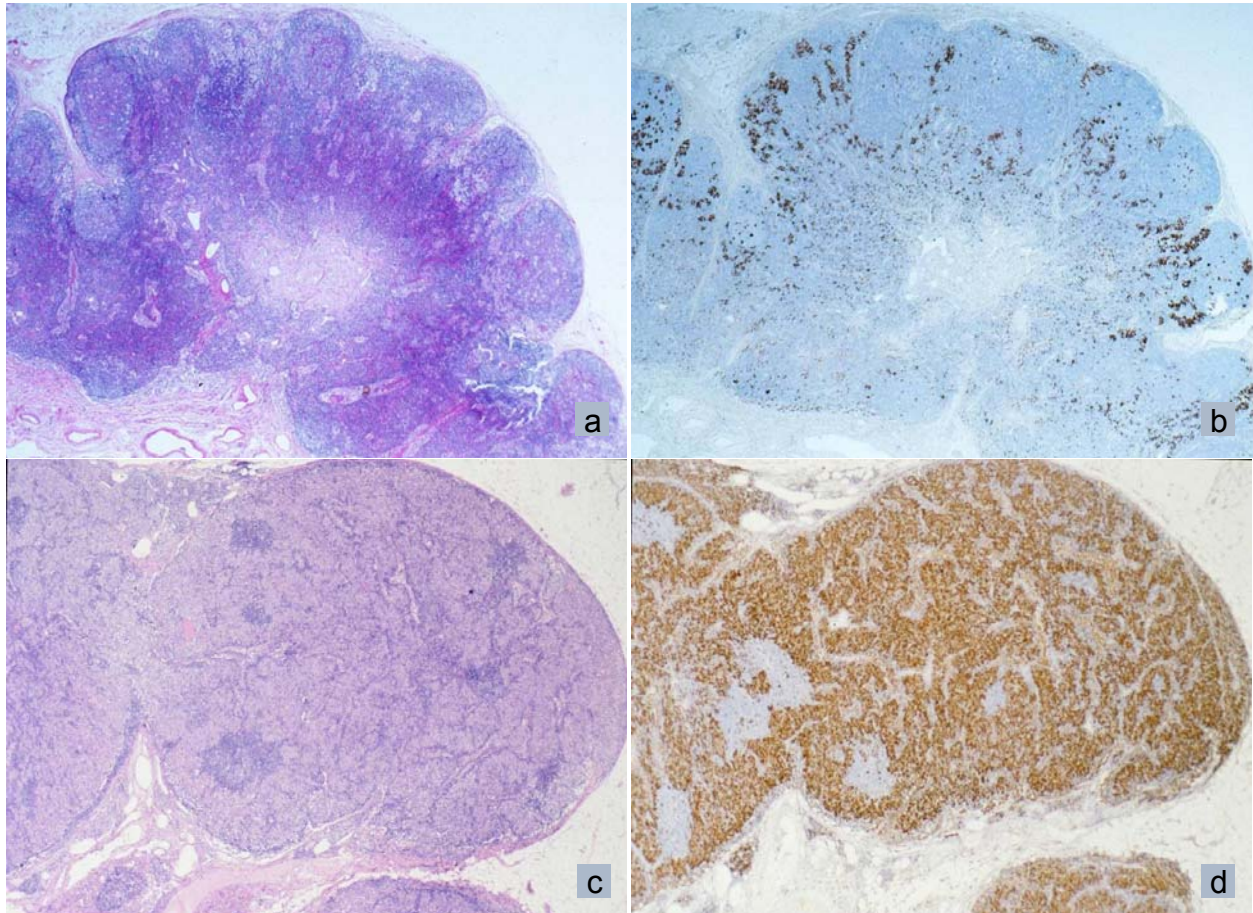
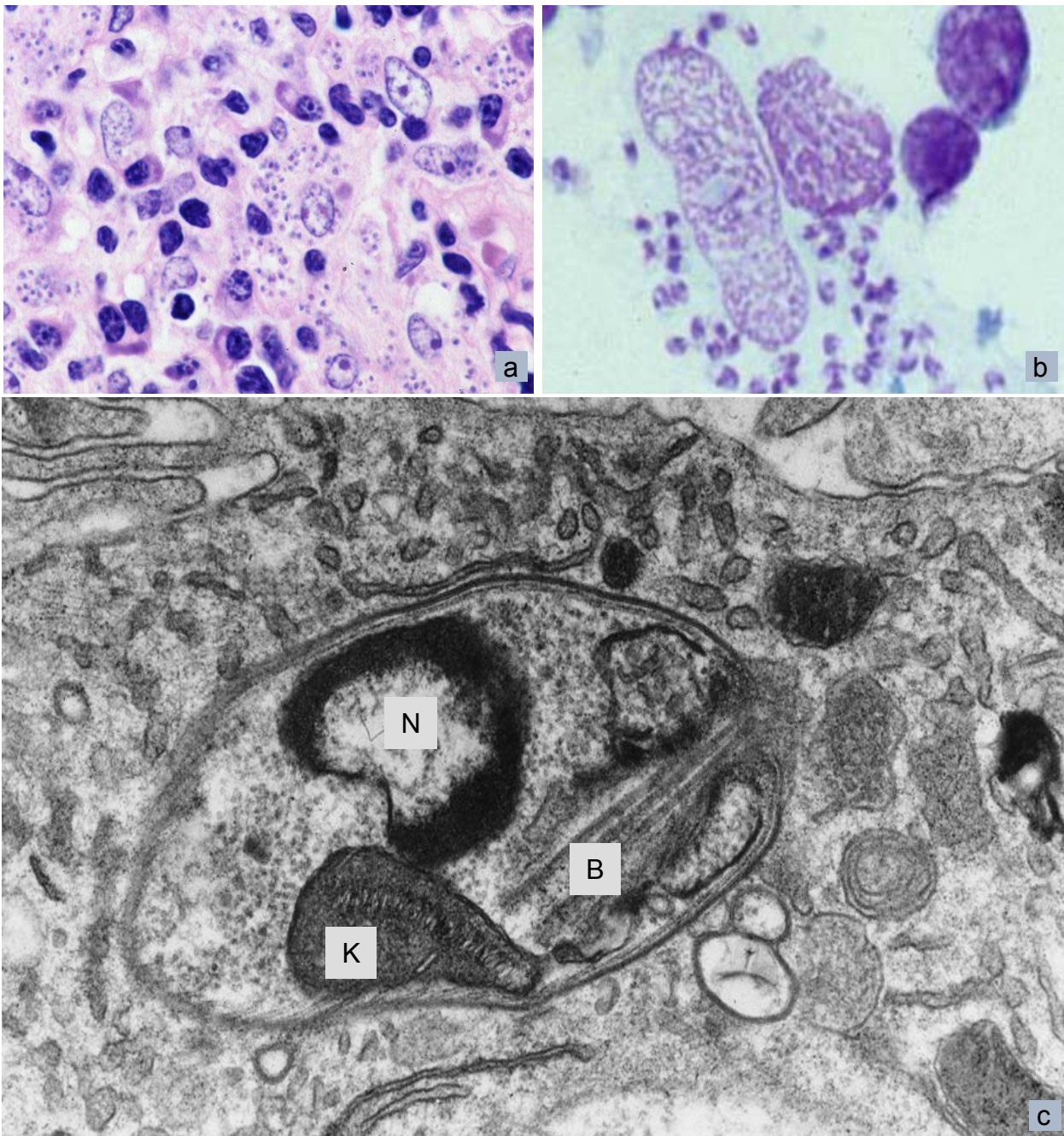


Supplementary Figure 1. Progressive leishmaniasis with increasing lymphocytic depletion and reciprocally expanding CD68⁺ macrophages harbouring Leishman-Donovan bodies.



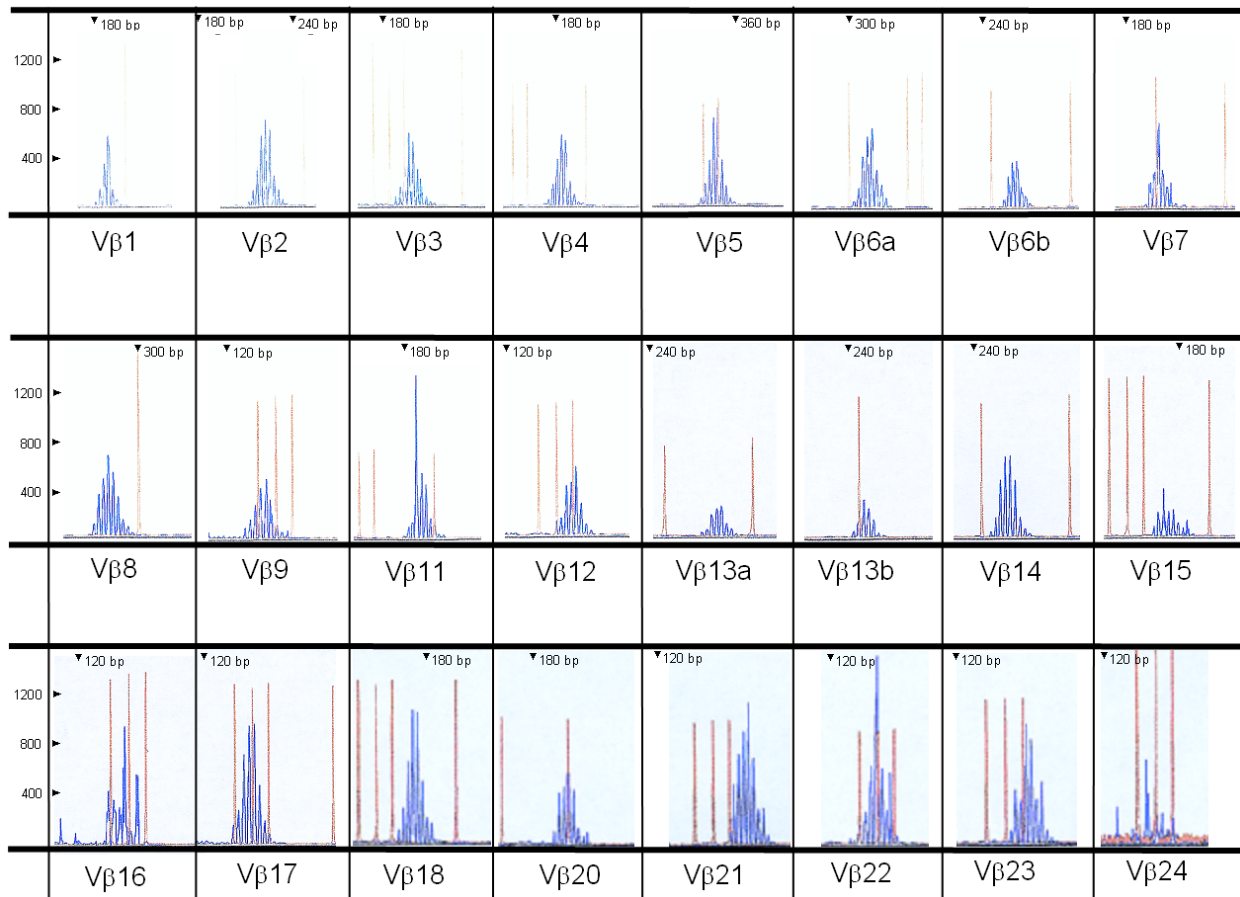
Serial sections of the initial diagnostic lymph node biopsy stained for H&E (a) and CD68 as an immune-cytochemical marker for macrophages (b). Serial sections of a follow-up lymph node biopsy 2 years later, H&E (c) and CD68 (d), reveal a dramatic expansion of CD68⁺ macrophages containing the parasites.

Supplementary Figure 2. Microscopical details of typical Leishman-Donovan bodies within lymph node macrophages.



Higher magnification (a) from panel Fig. 1c and touch imprint (b) depicting macrophages with numerous Leishman-Donovan bodies, Wright Giemsa stain. Electron-microscopical details (c) of a lymph node macrophage containing a typical Leishman-Donovan body at higher magnification: N = nucleus; K = kinetoplast containing a central helical DNA inclusion; B = basal body.

Supplementary Figure 3. TCRβ spectratyping of Patient B's lymphocytes.



TCRβ spectratyping of freshly isolated lymphocytes from Patient B, the red peaks represent molecular weight standards.

Supplementary Table 1. Primer table for the sequencing of the CD247 gene

<u>Primer pair name</u>	<u>Primer sequence: sense</u>	<u>Primer sequence: antisense</u>
CD3ZEx1	cagacagacagatacacacacacc	ccctcactgctcaactgcc
CD3ZEx2	tcagtcagtcctagtccaccc	agccccaggcaccaccc
CD3ZEx3	gccaaggagcggagtaggg	gtcgcagaggtgatagctaggg
CD3ZEx4	ctgagatgtcctctgggatgatgg	cacatgtgagggtcgagtctgg
CD3ZEx5	gccatgtagtgccatgaggg	ttcctccaactttccaagg
CD3ZEx6	agctgggtgtgggcagagaag	catttcagctgggatgagaag
CD3ZEx7	ggcaggggtgctgctggg	gcctaatgggtgccttggg
CD3ZEx8	gtggtcacagggtgtgctg	aaagagtgcagggacaacagtctg