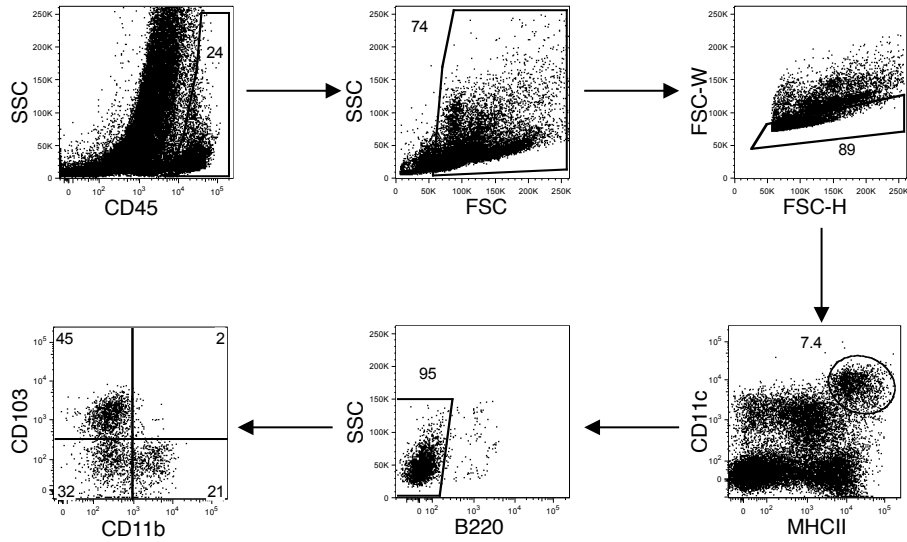
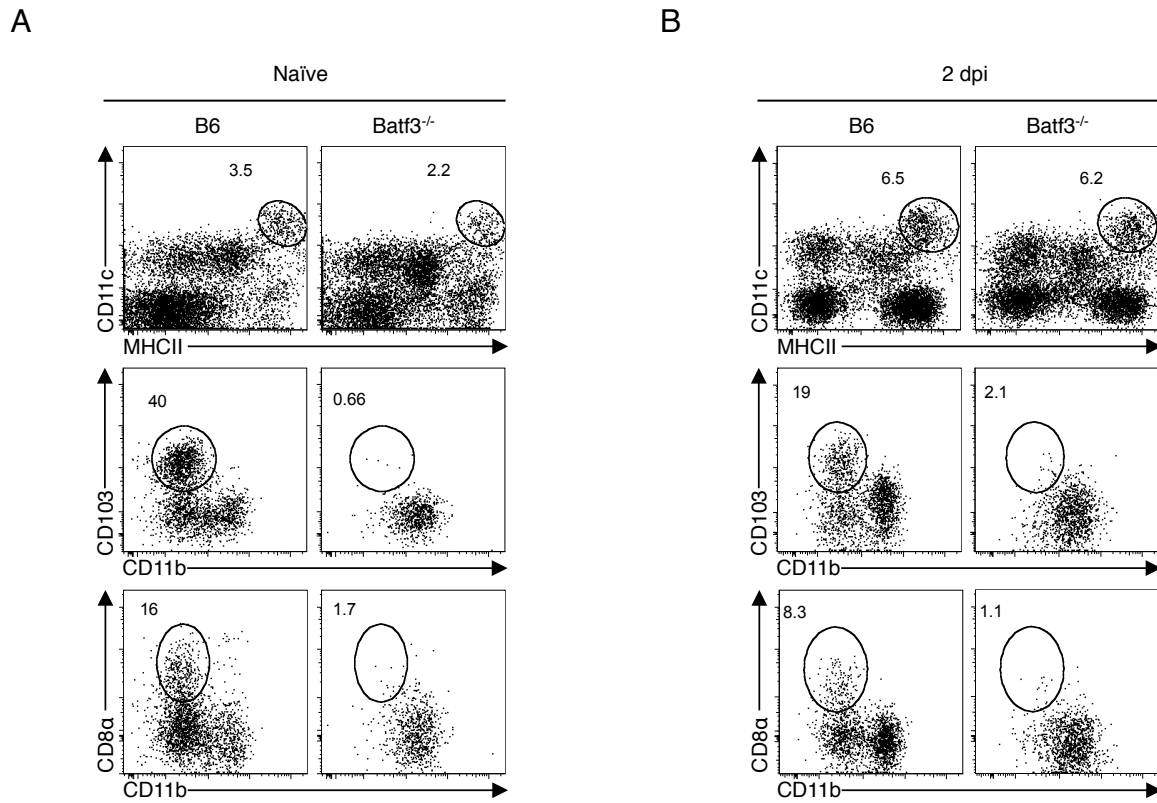


Sup. Fig. 1



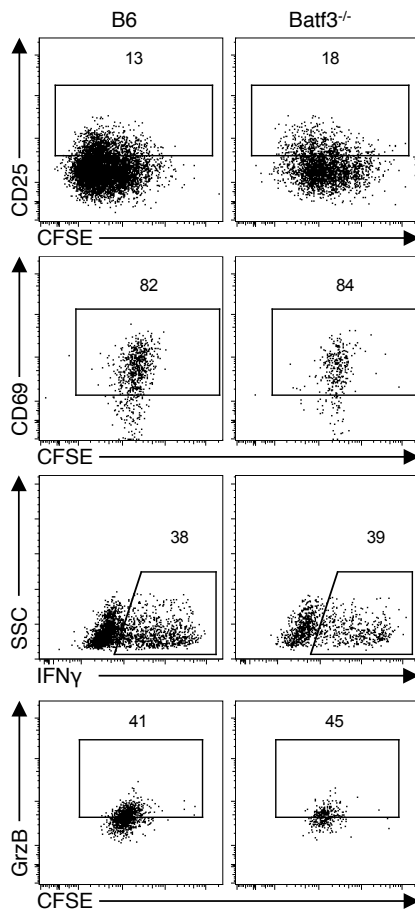
Supplemental Figure 1. Liver resident classical dendritic cell (DC) subsets. Representative dot plots for liver resident DCs grating strategy. 8-12 week old C57Bl/6 livers were collagenase digested and spun on a sedimentation gradient. CD11c^{hi}MHCII^{hi} DCs are gated from CD45⁺ events, followed by debris and doublet exclusion. B220⁺ cells are dumped to eliminate contaminating plasmacytoid DCs. Three DC subtypes are separated into CD11b⁻CD103⁺, CD11b⁻CD103⁻ and CD11b⁺CD103⁻ gates. Representative of 3 independent experiments.

Sup. Fig. 2

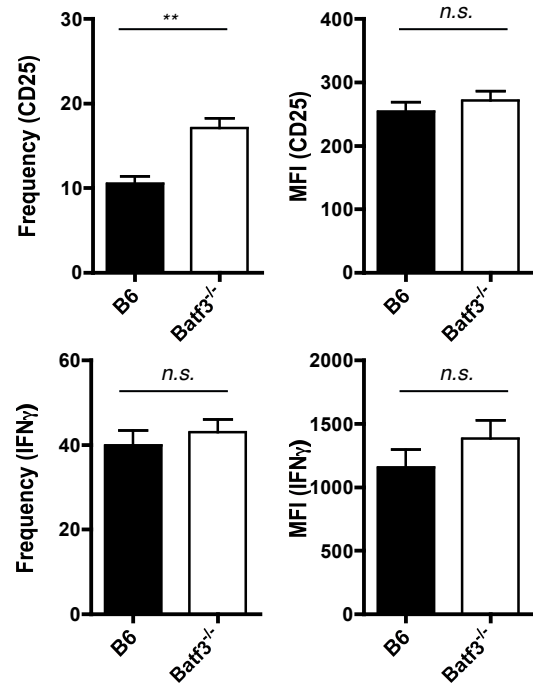


Supplemental Figure 2. Batf3^{-/-} livers lack CD103⁺ and CD8α⁺ DCs. (A) Naïve or (B) 2 day i.v. infected (2.5×10^7 IU Ad-OVA) C57Bl/6 and Batf3^{-/-} liver mononuclear cells were analyzed by flow cytometry for DCs using the previously described gating strategy. Representative dot plots of DC subsets stained for CD11b, CD103 and CD8α surface marker expression (n = 13). Representative of 5 independent experiments.

A

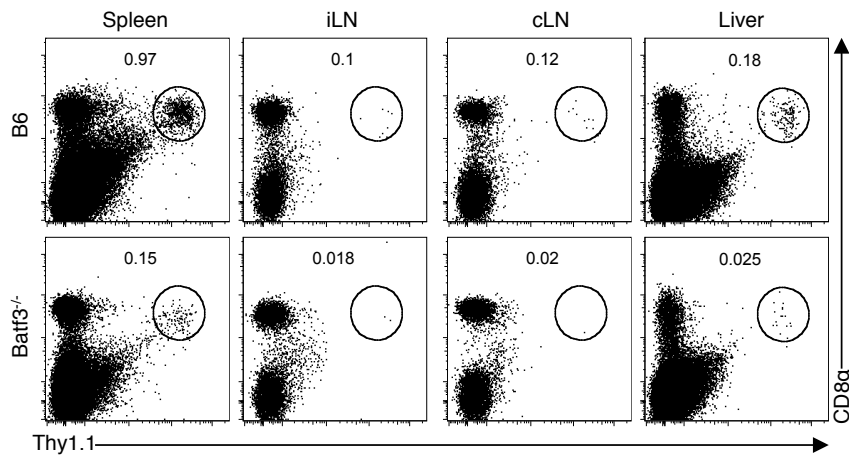


B

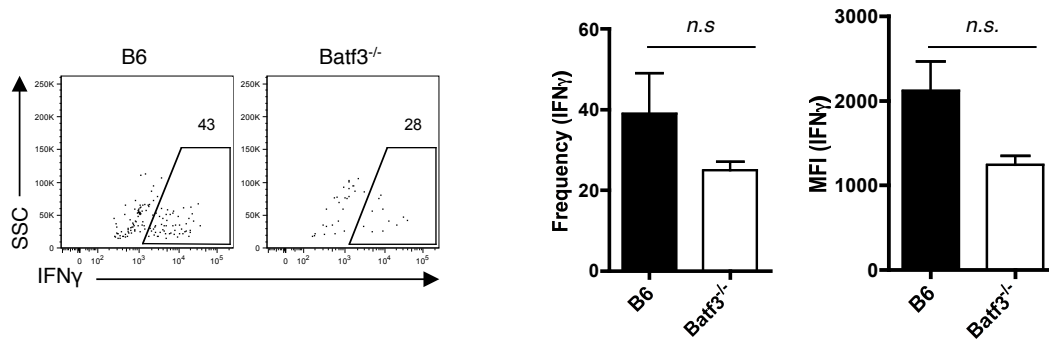


Supplemental Figure 3. Antigen-specific T cells in the liver have similar CD25 and IFN γ expression in the absence of CD103⁺/CD8 α ⁺ DCs. (A – B) 2×10^5 naïve CFSE⁺ OT-I cells were transferred via the tail vein into C57Bl/6 and Batf3^{-/-} mice 1 day prior to 2.5×10^7 IU Ad-OVA infection (i.v.). (A) Representative CD45⁺CD8 α ⁺Thy1.1⁺ OT-I expression flow plots for CD25, CD69, IFN γ and GrzB from 3 dpi C57Bl/6 and Batf3^{-/-} livers (n = 6-13). (B) Quantified frequency and MFI for CD25 and IFN γ expression from 3 dpi C57Bl/6 and Batf3^{-/-} livers (n = 13). Representative of 2-5 independent experiments. Student's t test (two-tailed): ** $p < 0.01$, mean \pm SEM.

A



B



Supplemental Figure 4. Batf3^{-/-} mice exhibit decreased antigen-specific CD8⁺ T cell numbers during MCMV-Ova infection. (A – B) 2×10^5 naïve CFSE⁺ OT-I cells were transferred via the tail vein into C57Bl/6 and Batf3^{-/-} mice 1 day prior to 4×10^5 PFU MCMV-OVA infection (i.v.). (A) Representative CD45⁺CD8α⁺Thy1.1⁺ OT-I flow plots from spleens, inguinal lymph nodes (iLN), coeliac/hepatic lymph nodes (cLN) and livers harvested from C57Bl/6 and Batf3^{-/-} mice 3 dpi (B) Representative CD45⁺CD8α⁺Thy1.1⁺ IFNγ⁺ OT-I flow plots and quantified IFNγ frequency and MFI (n = 3). Student's t test (two-tailed): * $p < 0.05$, mean \pm SEM.