

Figure S1: IND effect on LP07 tumor growth. 5×10^5 LP07 cells were injected s.c. into 3 months female BALB/c mice and IND was given orally from the day of tumor inoculation. Tumor volume was assessed by measuring both diameters with a Vernier caliper.

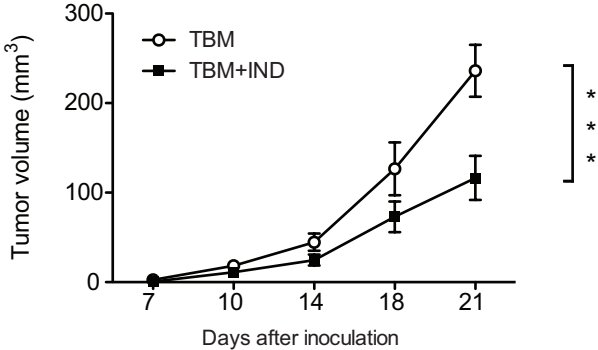


Figure S2: IND counteracts the suppressive activity of MDSCs from mice bearing 4T1 tumors. BALB/c mice were injected s.c. with 2×10^4 4T1 tumor cells. Three days after tumor inoculation, mice were injected i.p. with 5×10^5 splenic MDSC isolated from mice bearing advanced 4T1 tumors (18-20 days), which have been treated or not with IND (n= 12). (***) $P < 0.001$. Mice bearing 4T1 tumors which were not transferred with MDSCs served as controls. Data represent the mean + SEM of three experiments.

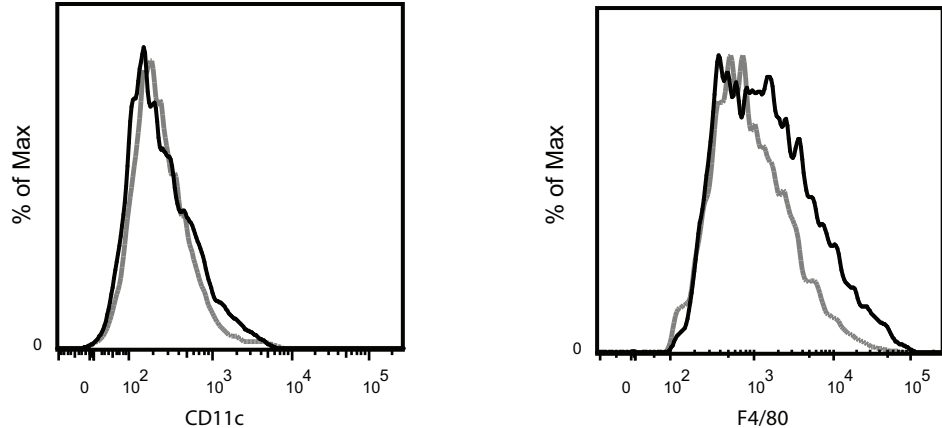


Figure S3: CD11c and F4/80 staining of BM-MDSCs. Bone marrow progenitors from BALB/c mice were differentiated for 4 days with GM-CSF and stained with FITC-conjugated CD11c or PerCP-Cy5.5-conjugated F4/80 or with appropriate isotype control Ab and analyzed by flow cytometry. Gray lines, isotype control; black lines, BM-MDSCs.