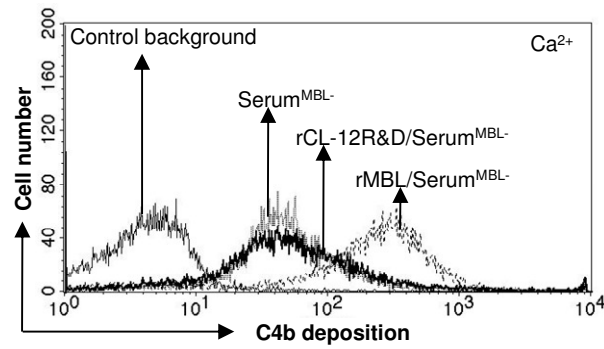
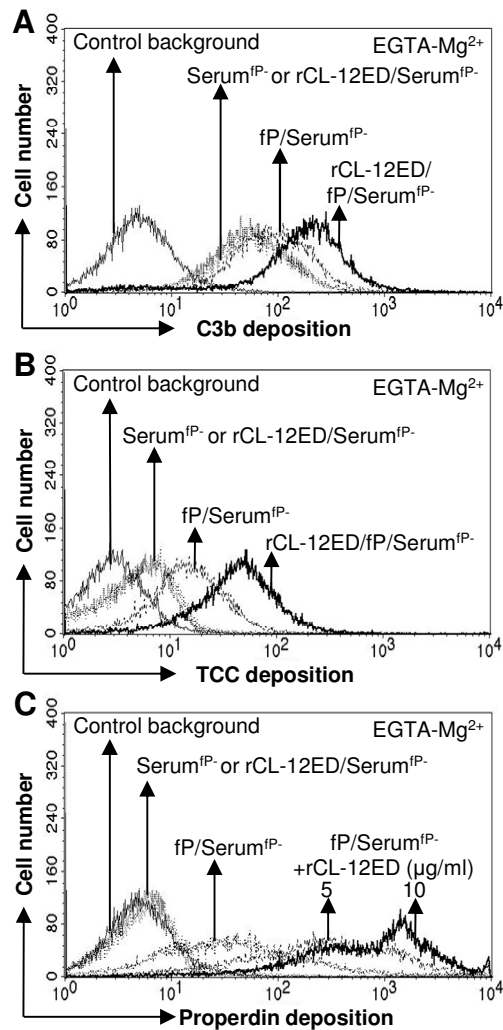


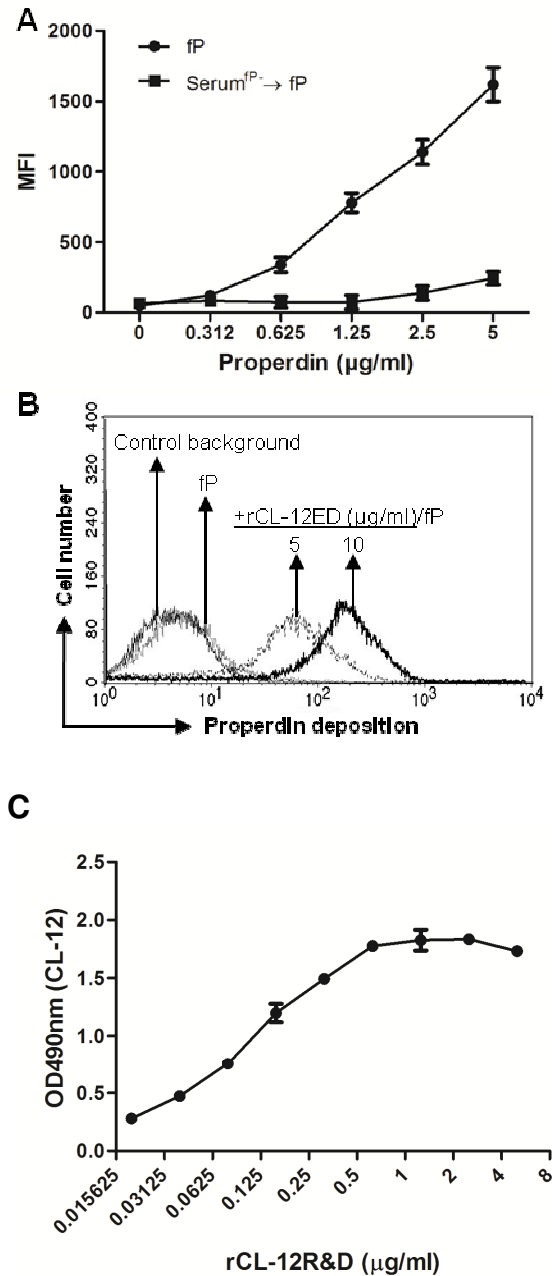
Supplemental Fig. 1. (A) Western blot of CL-12 in human umbilical cords. The level of CL-12 in total protein extracts from human umbilical cords were analyzed in western blot. Lane 1: rCL-12 R&D; Lane 2: Total protein extract from human umbilical cord. (B) Immunoprecipitation of CL-12 in human umbilical cords. Total protein extracts from human umbilical cords were immunoprecipitated with CL-12 mAb or rat IgG1, and analyzed with CL-12 pAb in western blot. Lane 1: The total protein extract/rat IgG1; Lane 2: The total protein extract/CL-12 mAb; Lane 3: rCL-12 R&D/rat IgG1; Lane 4: rCL-12 R&D/CL-12 mAb. Results are representative of five independent experiments with human umbilical cords from five individuals that yields similar results.



Supplemental Fig. 2. Effect of soluble CL-12 on C4b deposition. C4b deposition was determined with rCL-12R&D (5 $\mu\text{g/ml}$) or rMBL (5 $\mu\text{g/ml}$) in the presence of Ca^{2+} as described in *Materials and Methods*. Results are representative of at least three independent experiments.



Supplemental Fig. 3. Effect of rCL-12ED on the AP of complement activation. C3b deposition (A), TCC deposition (B) and properdin binding (C) were analyzed by rCL-12ED (5 $\mu\text{g/ml}$) in the presence of properdin (10 $\mu\text{g/ml}$) as described in *Materials and Methods*, respectively. Results are representative of at least three independent experiments.



Supplemental Fig. 4. Binding of properdin to rCL-12ED anchored on *A. fumigatus*. (A)

Properdin binding to *A. fumigatus* with or without pre-incubation of serum^{fP-} (10%). (B) Effect of

rCL-12ED on recruitment of properdin. Properdin (5 $\mu\text{g/ml}$) binding to *A. fumigatus* was analyzed

with or without pre-opsonization of rCL-12ED (5 or 10 $\mu\text{g/ml}$) as described in *Materials and*

Methods. As control, samples prepared from CHO/Control were applied instead. The MFI was used to assess protein binding. Results are representative of at least three independent experiments. (C)

Binding of rCL-12R&D to properdin in ELISA. Microtiter wells were coated with properdin (5 $\mu\text{g/ml}$) or BSA (5 $\mu\text{g/ml}$), and incubated with elevated concentrations of rCL-12R&D. Bound rCL-12R&D was analyzed as described in *Materials and Methods*. The measured background value was subtracted from the presented results. Results are expressed as mean \pm S.D. from triplicate experiments.