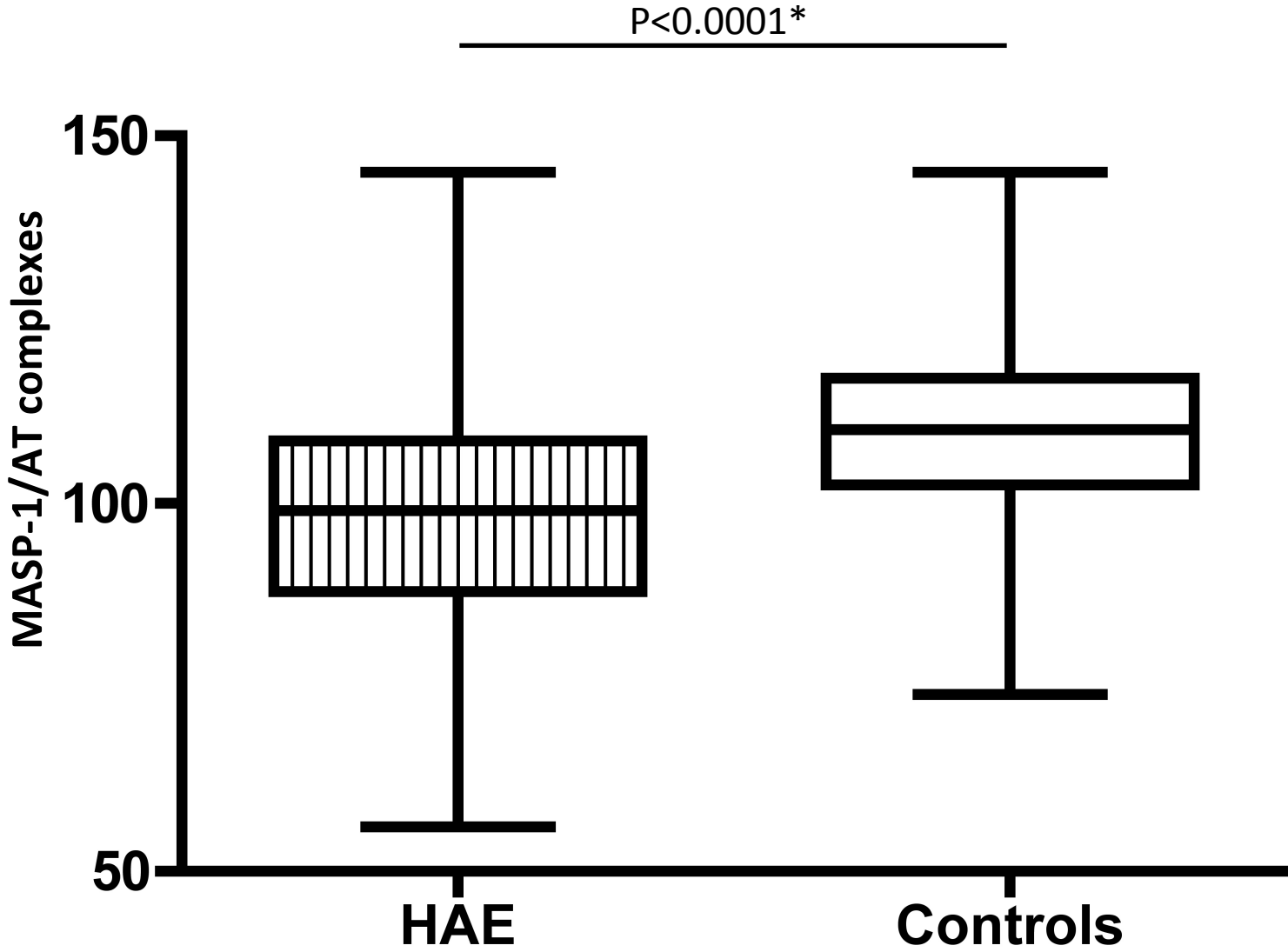
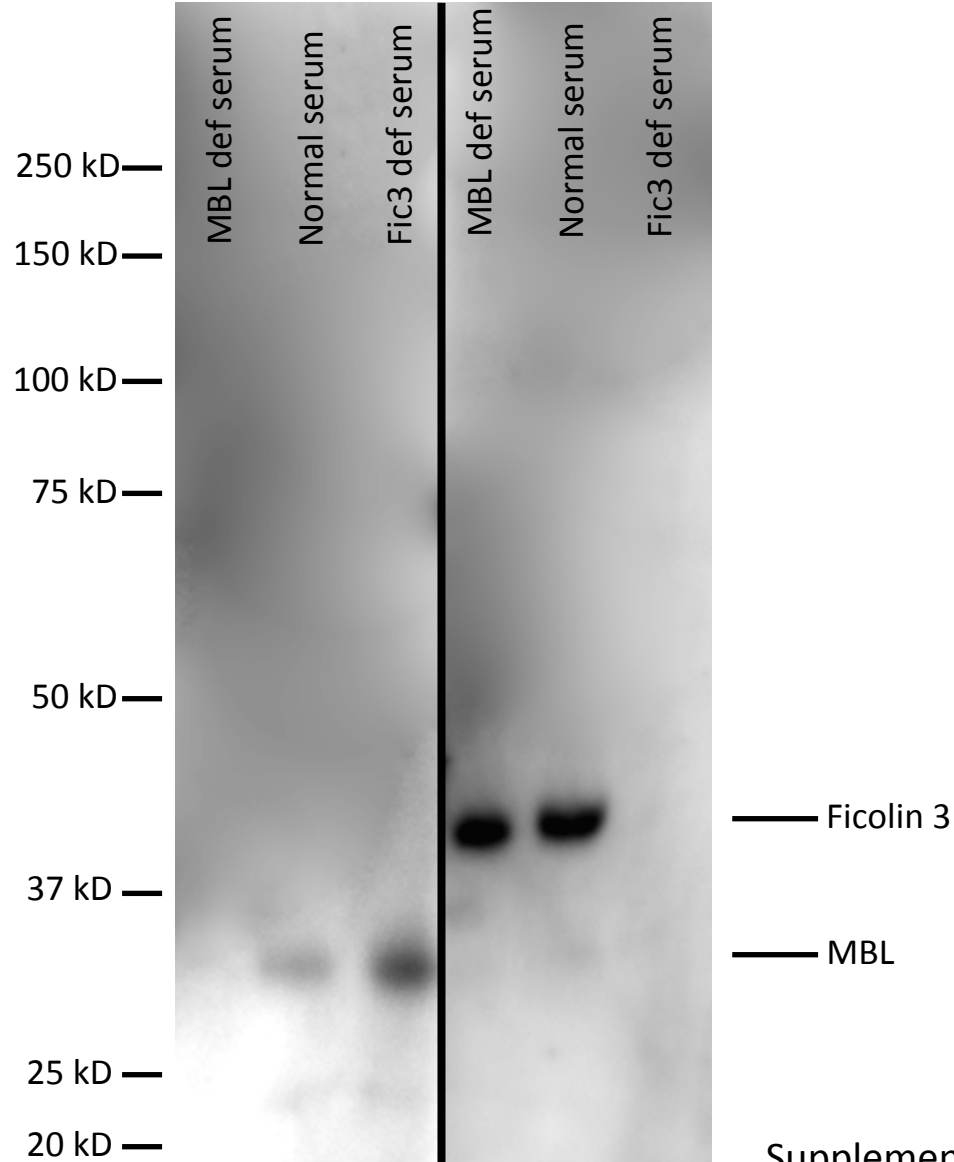


Supplementary material S1. Comparison of MASP-1/C1-INH and MASP-1-anti-thrombin complexes in different plasma types. Error bars indicate SEM of triplicates.



Supplementary material S2. MASP-1/antithrombin complex levels in the HAE patient cohort and the controls. *Non-parametric, two-tailed t-test (Mann-Whitney U-test)



Supplementary material S3

PRMs represented by MBL and Ficolin-3 with the MASP-1/C1-INH complexes. Normal human serum and two individual sera deficient in MBL or Ficolin-3 incubated on the MASP-1/C1-INH protocol and analyzed by reducing SDS-PAGE/immunoblotting with monoclonal antibodies to either MBL or Ficolin-3.