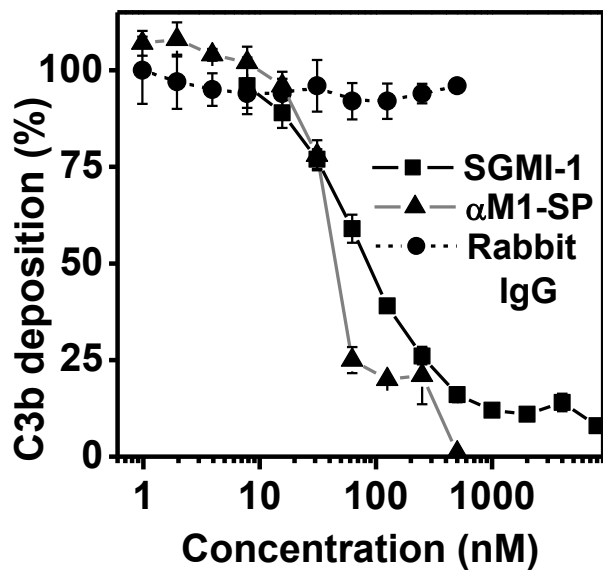


Supplementary Figure 1

Figure 1. Polyclonal anti-MASP-1 antibody inhibits LP activation



Polyclonal antibody raised against the serine protease domain of MASP-1 (α M1-SP) efficiently inhibited lectin pathway activation, similarly to SGMI-1, while the control rabbit IgG did not affect LP activation. The LP activation was followed by detecting C3 deposition. Results are representative of at least three independent experiments.