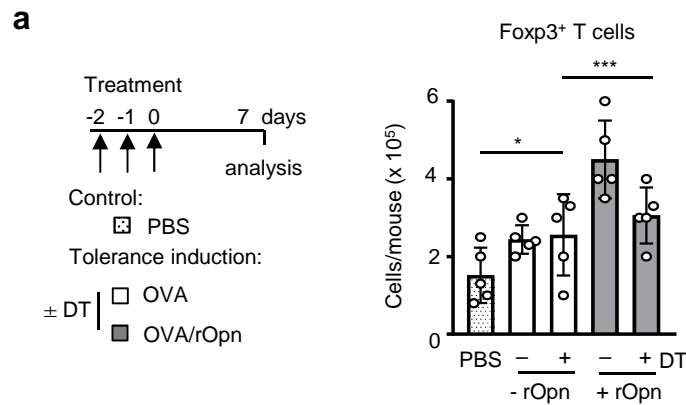
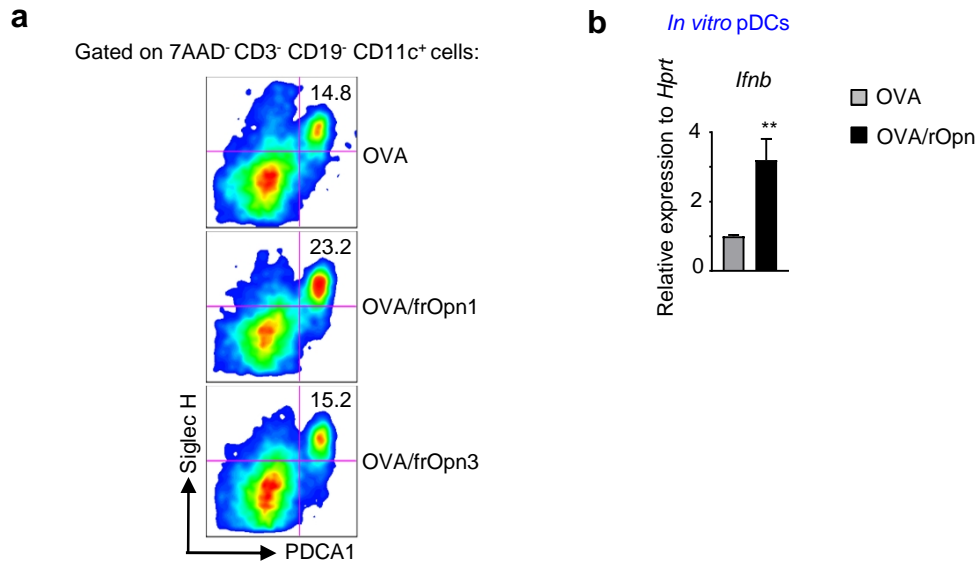


Supplemental Figure 1. Opn increases the numbers of pDCs. Mice were pretreated with endotoxin-free OVA or PBS and analyzed after 40 hrs as in Figure 3a. Numbers of 7AAD⁻CD3⁻CD19⁻CD11c⁺CD11b⁻B220⁺PDCA-1⁺ pDCs in dLNs and 7AAD⁻CD11c⁺CD11b⁺PDCA-1⁻ cDCs from dLNs of *Spp1*^{+/+} or *Spp1*^{-/-} mice. Values are expressed as mean \pm SEM ($n=4$ mice per group), one representative experiment of three independent experiments.



Supplemental Figure 2. pDC deletion in BDCA2-DTR mice abrogates Treg cell accumulation in Opn-induced tolerance. For pDC depletion mice received diphtheria toxin (DT) on days -4, -3 followed by tolerance induction for Treg cell generation. Control mice were treated with PBS. Numbers of Treg cell (CD3⁺CD4⁺Foxp3⁺) accumulation in dLNs with and without rOpn administration. Values are expressed as mean ± SEM (*n*=5 mice per group), one representative experiment of three independent experiments.



Supplemental Figure 3. Opn SLAYGR motif enhances pDC recruitment in dLNs and IFN- production in pDCs. (A) Gating strategy and percentages of 7AAD⁻CD3⁻CD19⁻CD11c⁺PDCA-1⁺Siglec-H⁺ pDCs in dLNs of tolerized mice treated with OVA or OVA/frOpn1 or OVA/frOpn3 (scrambled peptide: see Fig. 8A) for control. Mice were tolerized as in Fig. 3A. (B) Relative *Ifnb* expression to *Hprt* in pDCs conditioned *in vitro* with OVA and OVA/rOpn. Values are expressed as mean \pm SEM ($n=10$), pooled data from three independent experiments.

Supplemental Table 1

Gene:	Sense (5'-3')	anti-sense (5'-3)
<i>Ccl19</i>	ATCTGAGCGATTCCAGTCA	TCTTCCGCATCATTAGCAC
<i>Ccl21</i>	TTCACGGTCCAACTCACA	CTCTTTCTTCTGACTCTCTA
<i>Fgl2</i>	ACAGCCGAGGACAGTAGA	CGGTTAGATTTGCCACTTTG
<i>Ido</i>	GGCTTCTTCCTCGTCTCTCT	ATTCCTTGGCTTTCTCCAG
<i>Tgfb1</i>	CCTGGGTTGGAAGTGGGA	TAGTAGACGATGGGCAGT
<i>Ifnb</i>	CCTATGGAGATGACGGAGAA	TGGAGAGCAGTTGAGGACAT

Supplemental Table 1: Primers used for real-time PCR.