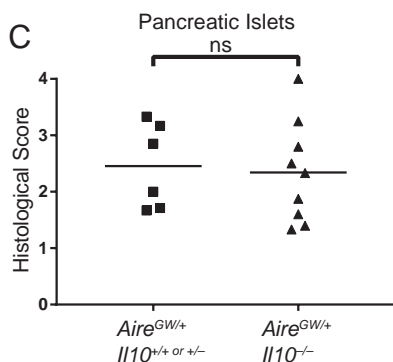
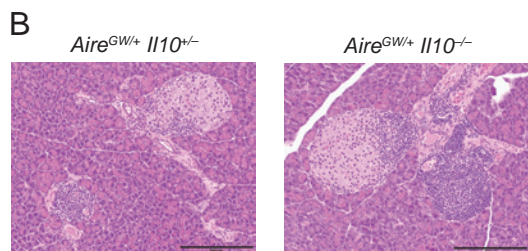
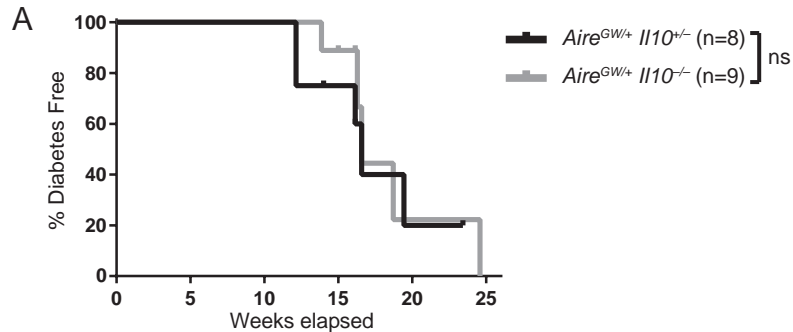
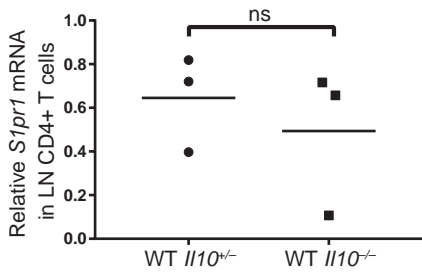


**Supplemental Figure 1. IL-10-deficient *Aire*<sup>GW/+</sup> mice have minimal colitis.** Image (A) and cumulative histological scores (B) of H&E-stained distal colon from 22-wk-old *Aire*<sup>GW/+</sup> *Il10*<sup>+/+</sup> or +/<sup>-</sup> and *Aire*<sup>GW/+</sup> *Il10*<sup>-/-</sup> mice (magnification 200x). Scale bar = 60 μm. p-value was calculated using Fisher's Exact test. ns indicates no significant difference was observed. Each symbol represents an individual mouse.



**Supplemental Figure 2. IL-10 deficiency does not affect diabetes in  $Aire^{GW/+}$  mice.**  $Aire^{GW/+} Il10^{+/-}$  and  $Aire^{GW/+} Il10^{-/-}$  mice were monitored for diabetes. (A) Diabetes incidence curve. p-value was calculated using Mantel-Cox log-rank test; ns indicates no significant difference was observed. Pancreatic islet images (B) and cumulative pancreatic islet infiltration scores (C) from 22-wk-old mice (magnification 200x). Scale bar = 200  $\mu$ m. p-value was calculated using Fisher's Exact test. ns indicates no significant difference was observed. Each symbol represents an individual mouse.



**Supplemental Figure 3.** CD4<sup>+</sup> T cells from lumbar lymph nodes of 22-wk-old *WT Il10*<sup>+/-</sup> and *WT Il10*<sup>-/-</sup> mice were analyzed for relative *S1pr1* mRNA expression. p-value was calculated using two-tailed unpaired Student's *t* test. ns indicates no significant difference was observed. Each symbol represents an individual mouse.