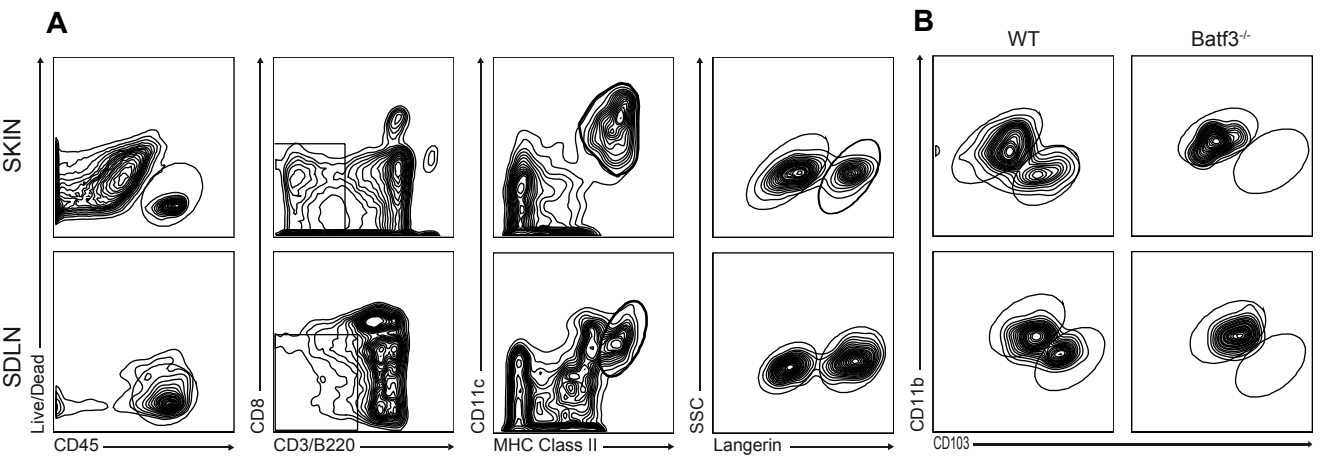
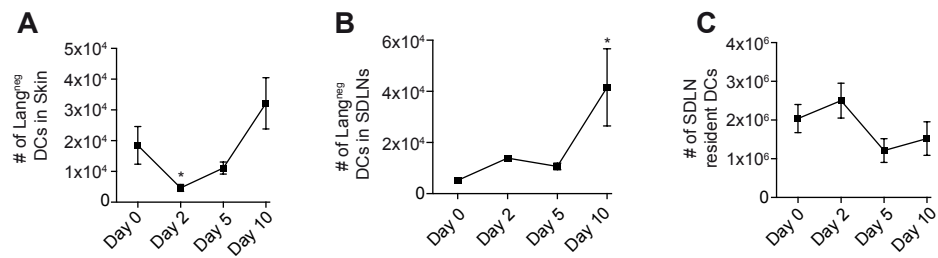


Supplementary Figure 1



Supplementary Figure 1. Gating strategy to identify CD103⁺ DDCs in **(A)** skin and skin draining lymph nodes (SDLNs), and **(B)** in wild-type and Batf3^{-/-} mice by flow cytometry.

Supplementary Figure 2



Supplementary Figure 2. Langerin^{neg} DC migration in response to cutaneous self antigen expression. Quantification of Langerin^{neg} DCs in **(A)** skin and **(B)** skin draining lymph nodes (SDLNs). **(C)** Quantification of CD11c^{High} MHC Class II^{Intermediate} SDLN resident DCs. One representative experiment of four is shown. Data are mean ± s.e.m. *P < 0.05, One-way ANOVA, day 0 vs other time points.