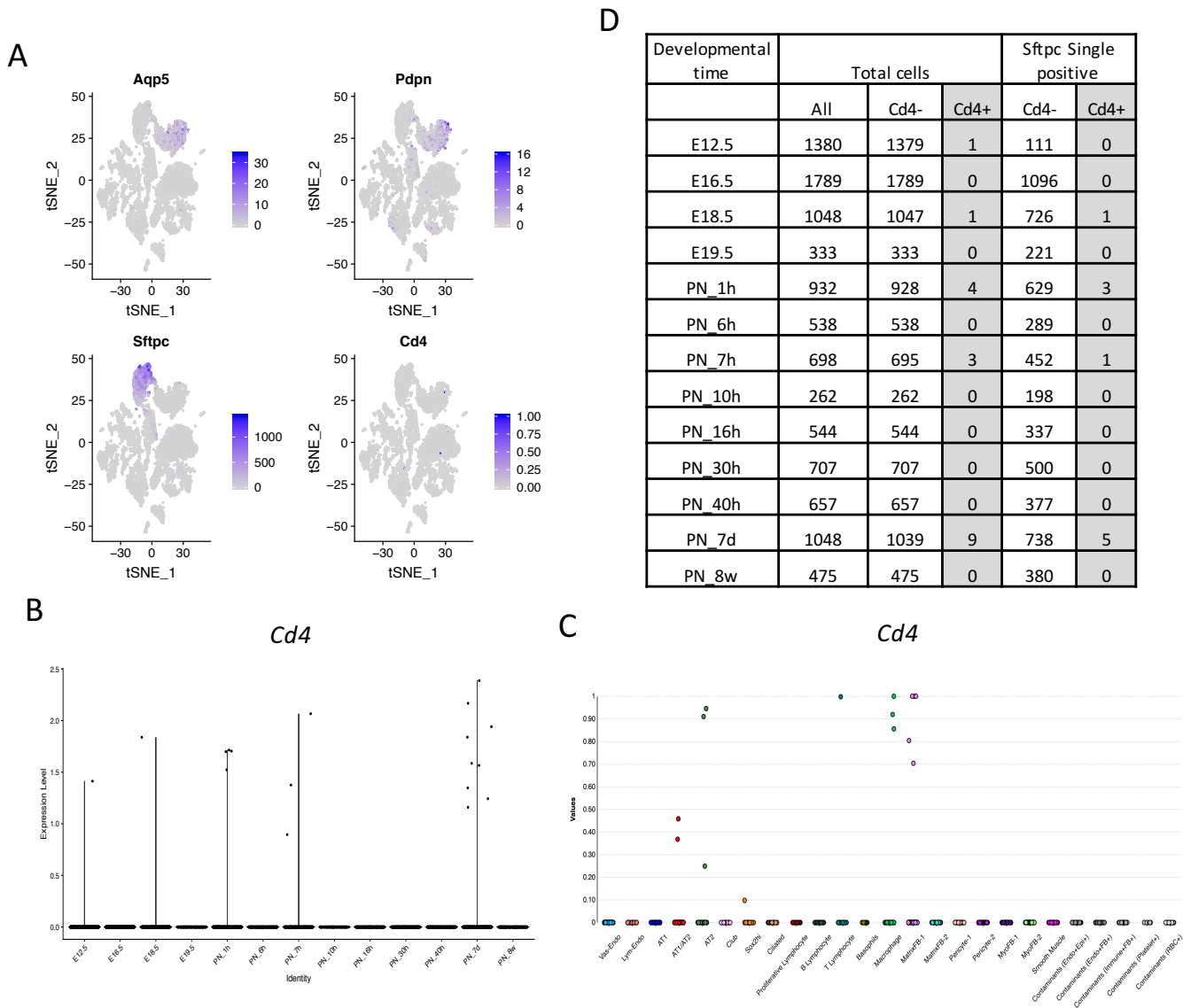


## Supplemental Figure S1



### Supplementary Figure S1. Cd4 expression in cells of the developing mouse lung by scRNA-Seq.

Existing datasets (A, B, D: Cohen et al. Cell 2018; C: Du et al. Thorax 2017) were analyzed for *Cd4* gene expression. The Cohen et al. dataset was analyzed using the Seurat package available for R (Stuart & Butler et al., bioRxiv, 2018 and Butler et al, Nature Biotechnology, 2018), other data were visualized using the LGEA Web Portal (<https://research.cchmc.org/pbge/lunggens/mainportal.html>).

A) tSNE dimensionality reduction was performed on sorted CD45<sup>-</sup> cells and gene counts for AT1-associated genes (*Aqp5*, *Pdpn*) and AT2-associated gene (*Sftpc*) were plotted with *Cd4* for combined developmental stages of mouse lung samples.

B) Normalized and scaled *Cd4* gene expression was plotted for different developmental stages.

C) *Cd4* expression was plotted using tools made available using the LGEA Web Portal for mouse lung cells at postnatal day 1.

D) Table summary of *Cd4* expression during developmental stages in all cells ("Total cells"; left) and within Sftpc<sup>+</sup> cells (right).