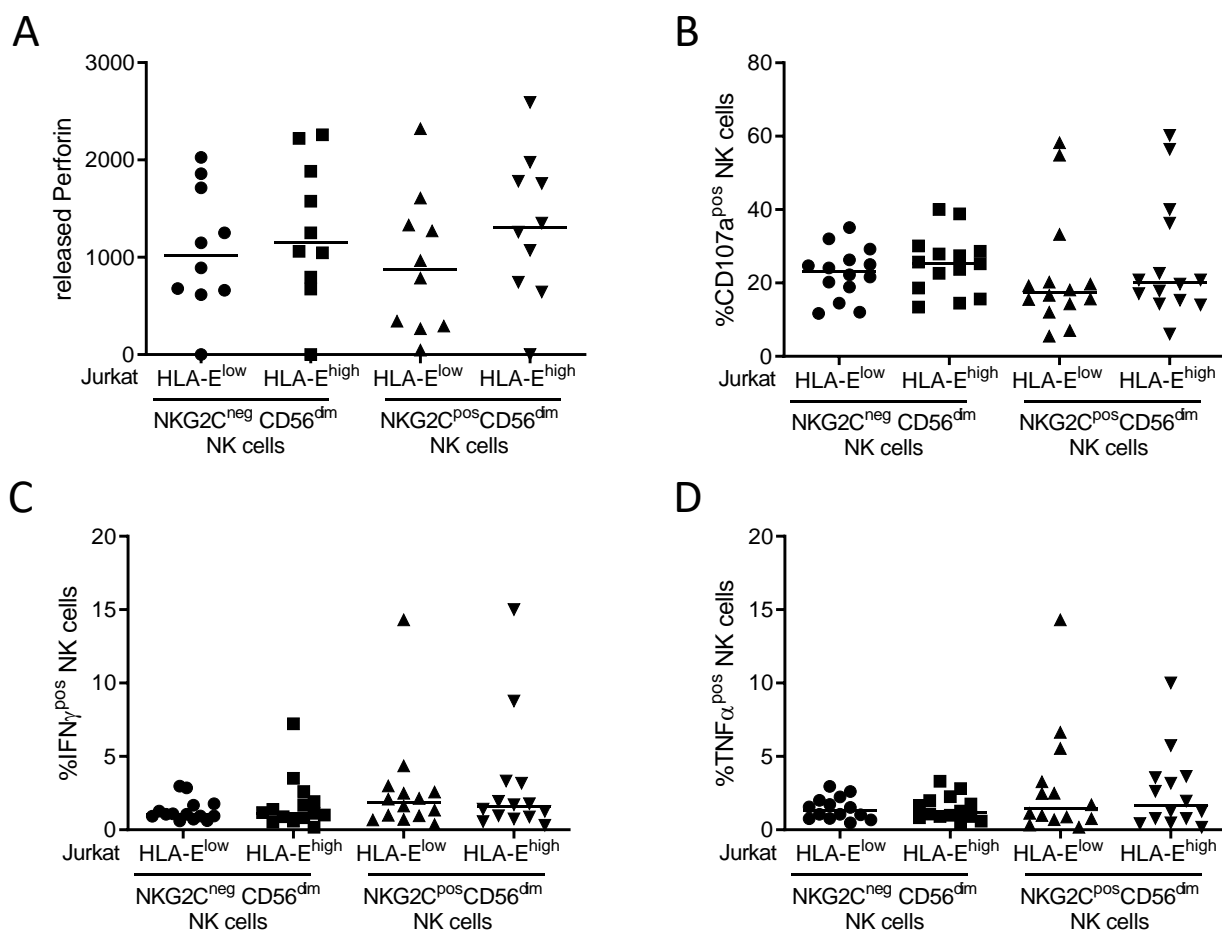


## Supplementing Figure 1



**Supplementing Figure 1: Analysis of Perforin, CD107a, IFN<sub>γ</sub> and TNF<sub>α</sub> of NKG2C<sup>neg</sup>CD56<sup>dim</sup> and NKG2C<sup>pos</sup>CD56<sup>dim</sup> NK cells after stimulation with HLA-E<sup>low</sup> and HLA-E<sup>high</sup> Jurkat cells.** PBMCs were incubated with Jurkat HLA-E<sup>low</sup> or Jurkat HLA-E<sup>high</sup> cells for 24 h at 26 °C. NKG2C<sup>neg</sup>CD56<sup>dim</sup> and NKG2C<sup>pos</sup>CD56<sup>dim</sup> NK cells were identified by flow cytometry and (A) released Perforin, (B) CD107a, (C) IFN<sub>γ</sub> and (D) TNF<sub>α</sub> expression was analyzed (Kruskal-Wallis test).