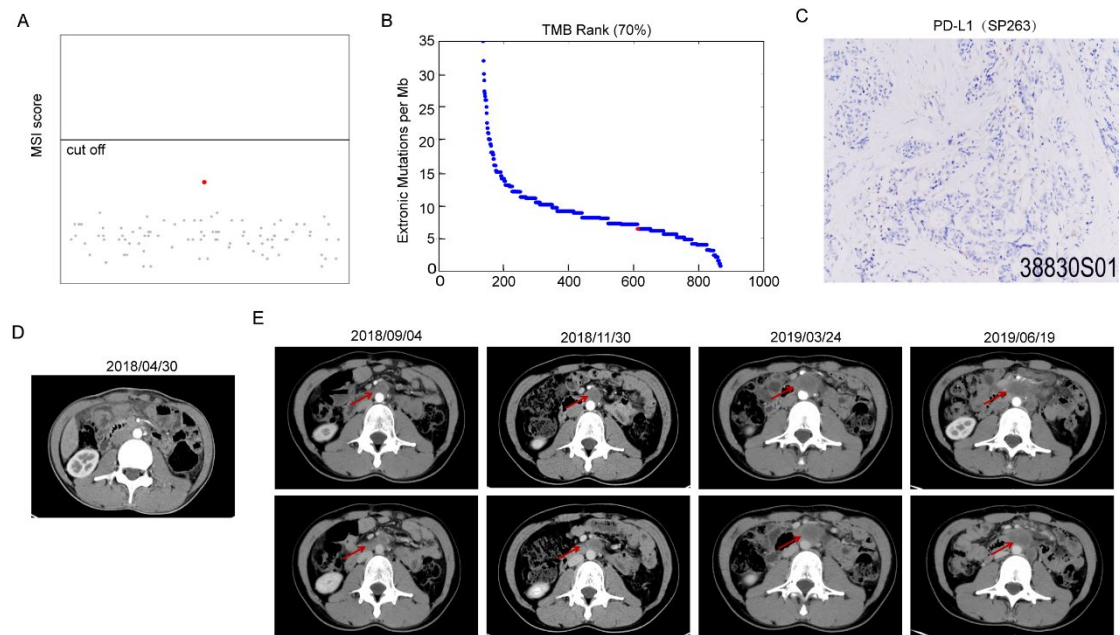


Supplementary data



Supplementary Figure 1. Gene test and previous CT scan results of the patient with mCRC. For the gene test, tumor tissue and peripheral blood were collected immediately after the surgery and sent to the 3D Medicines company for tests including MSI locus (A), TMB value (B), and PD-L1 staining (C). (A) Tissue MSI score was provided by 3D Medicines, and the tumor of the patient was judged to be MSS by 3D Medicines. (B) TMB value and ranking of the patient. The TMB was classified into high-, medium-, and low-grade according to the order of tumor species in the subject. TMB value in the 0-25% range is high, 26-75% is medium, and 76-100% is low. (C) The expression of PD-L1 in tumor tissue was detected by immunohistochemical analysis with a Ventana SP263 kit. The tumor proportion score (TPS) and tumor immune cells proportion score (IPS) of this patient were both 0%. (D) The first CT scan post-operation showing the surgical incision. (E) Representative CT scan from Sept 04, 2018 to Jun 19, 2019 before combination treatment with fruquintinib and anti-PD-1 antibody.

