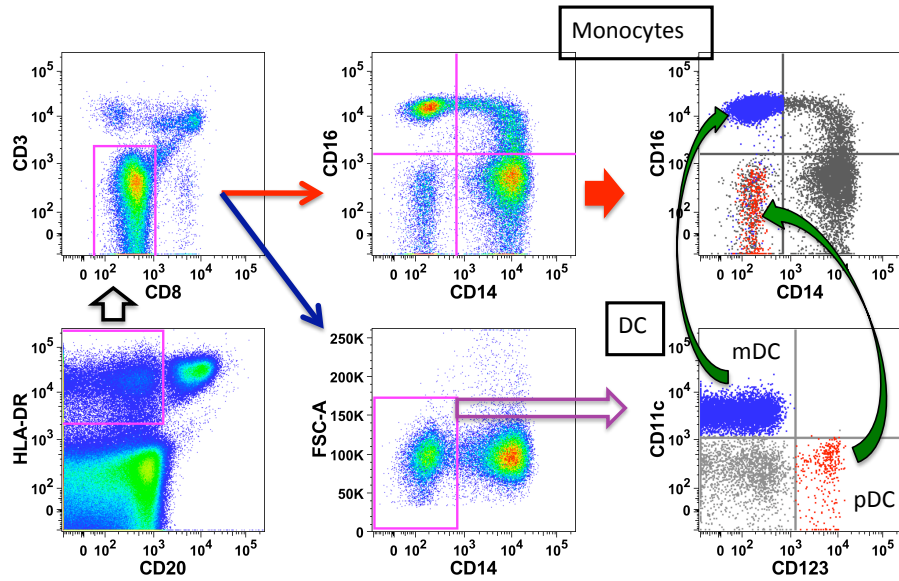


Supplemental Figure 1. CD11c, CD11b and CD163 expression on monocyte and DC subsets. The HLA-DR⁺ lymphocyte-lineage marker-negative cell population was analyzed for expression of CD14, CD16, CD11b, CD11c, and CD163. Panels A and B represent results from human blood and Panels C and D represent results from rhesus macaque blood. **(A and C)** Each monocyte subset is shown in different color: CD14⁺CD16⁻ (red), CD14⁺CD16⁺ (green), and CD14⁻CD16⁺ (blue). **(B and D)** DC populations were shown as CD11c⁺ mDC (red) and CD123⁺ pDC (blue).



Supplemental Figure 2. Comparison of conventional gating strategies between monocytes and DC in blood of rhesus macaques. The HLA-DR⁺ lineage⁻ (CD20/CD3/CD8) population was analyzed by two different strategies for monocytes (red arrows) or DC (blue arrow). The DC populations traditionally described as mDC (blue dots) and pDC (red dots) were identified as CD14⁻ CD16⁺ and CD14⁻ CD16⁻ on monocyte gate, respectively (green arrows).