

Supplementary figures

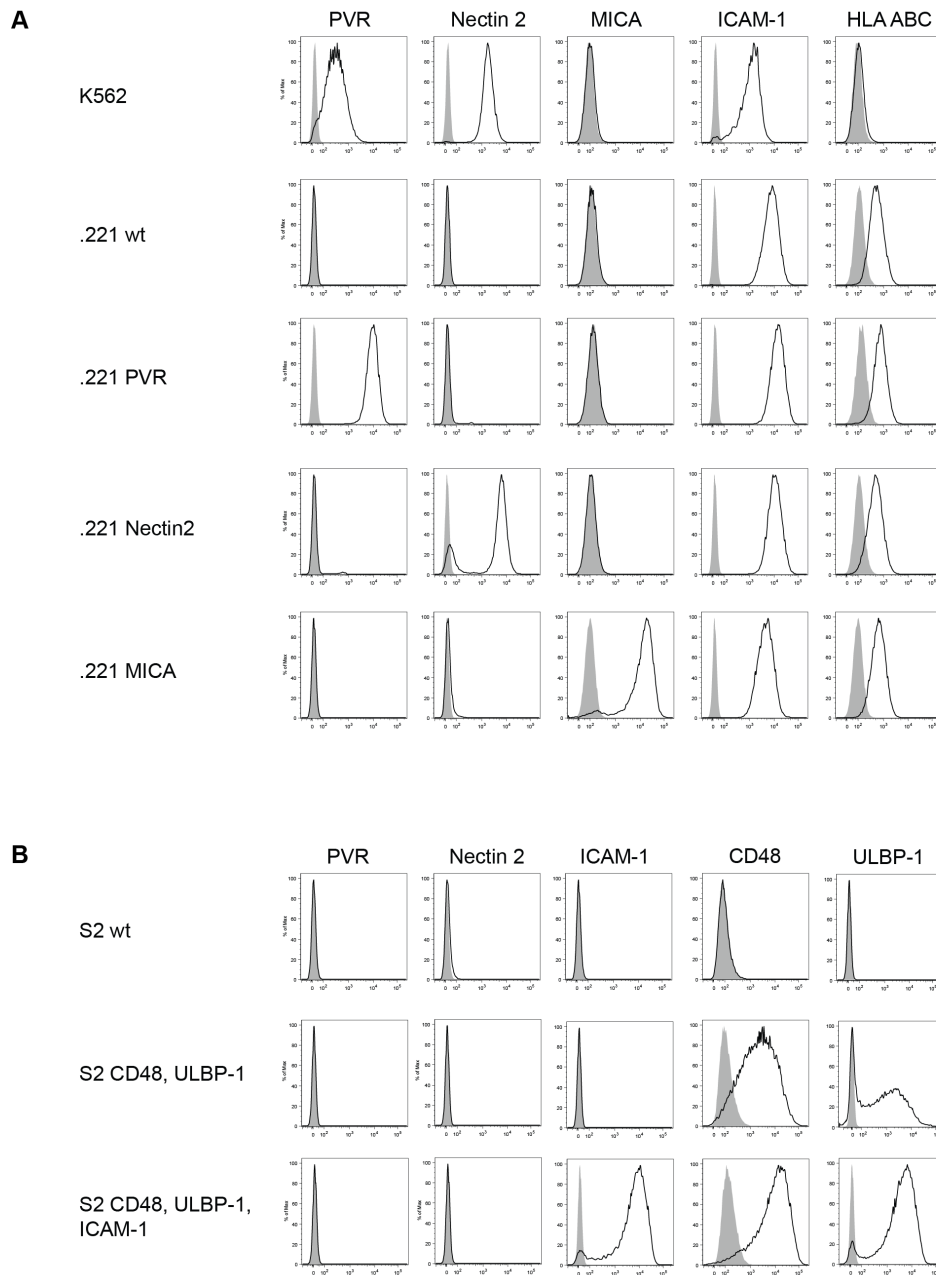


Figure S1. Expression of NK cell receptor ligands. (A) NK cell receptor ligand expression on K562 and 221 cells (PVR, Nectin 2, MICA, ICAM-1 and HLA ABC). (B) NK cell receptor ligand expression on S2 cells (ULBP-1, CD48, ICAM-1, negative for DNAM-1 ligands)

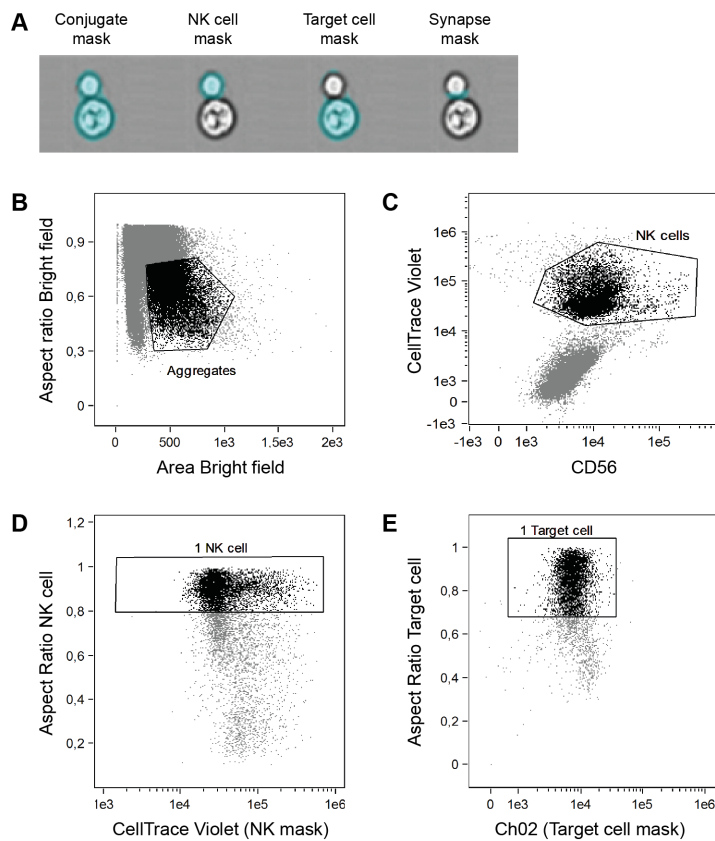


Figure S2. High-throughput analysis of receptor polarisation at the NK cell synapse by Image Stream. Gating and masking strategy for analysis of NK cell synapses in NK–target cell conjugates. (A) Example bright field image with masks for the conjugate, NK cell, target cell and NK cell synapse. The NK cell mask is based on CellTrace Violet staining of NK cells. (B) Events with low aspect ratio and large area are identified as cell aggregates including target cells. (C) Aggregates positive for CellTrace Violet contain at least one NK cell. (D) To eliminate aggregates with more than one NK cell, events where the aspect ratio of the NK cell mask was low were excluded. (E) Events where the aspect ratio of the target cell mask was high were identified as aggregates containing only one target cell.