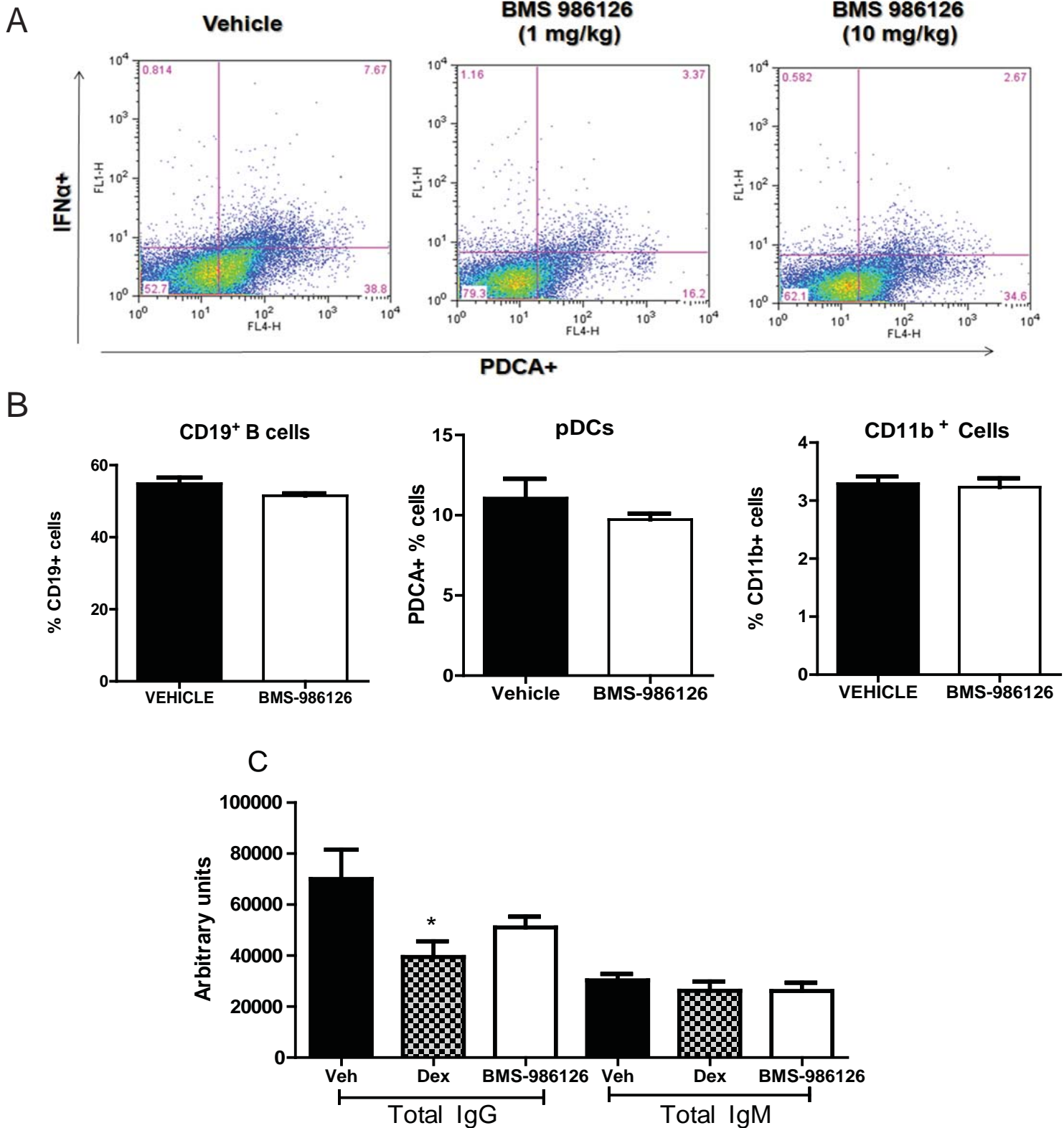


SUPPLEMENTAL FIGURE 1. Cell subset and total Immunoglobulin levels from the MRL/*Ipr* study. **(A)** Representative dot plots of intracellular staining for one animal per group of five for IL-6 in splenic CD11b+ myeloid cells and IFN α in splenic plasmacytoid dendritic cells following 8 weeks of dosing. **(B)** Total numbers of splenic CD4+ T cells, CD8+ T cells, CD19+ B cells, CD11b+ and CD11c+ myeloid cells and PDCA+ plasmacytoid dendritic cells following 8 weeks of dosing with either vehicle (Veh) or 10 mg/kg BMS-986126. Data represent the mean and standard error of 8 animals/group. **(C)** Total serum levels of IgM and IgG following 8 weeks of dosing with either vehicle (Veh), 10 mg/kg prednisolone (Pred) or 10 mg/kg BMS-986126. Data represent mean and standard error of 8 animals/group. ** $p < 0.001$ vs vehicle by one way ANOVA with Dunnett's test.



SUPPLEMENTAL FIGURE 2. Cell subset and total Immunoglobulin levels from the NZB/NZW study. **(A)** Representative dot plots of one animal per group of five for intracellular IFN α staining in splenic plasmacytoid dendritic cell populations following 25 weeks of dosing. **(B)** Percentages of splenic CD19⁺ B cells, CD11b⁺ myeloid cells and plasmacytoid dendritic cells following 25 weeks of dosing with either vehicle or 10 mg/kg BMS-986126. Data represent the mean and standard error of 8 animals/group. **(C)** Total serum levels of IgM and IgG following 25 weeks of dosing with either vehicle, 1 mg/kg dexamethasone (dex) or 10 mg/kg BMS-986126. Data represent mean and standard error of 8 animals/group. * $p < 0.01$ vs vehicle by one way ANOVA with Dunnett's test.