

Supplemental Figure

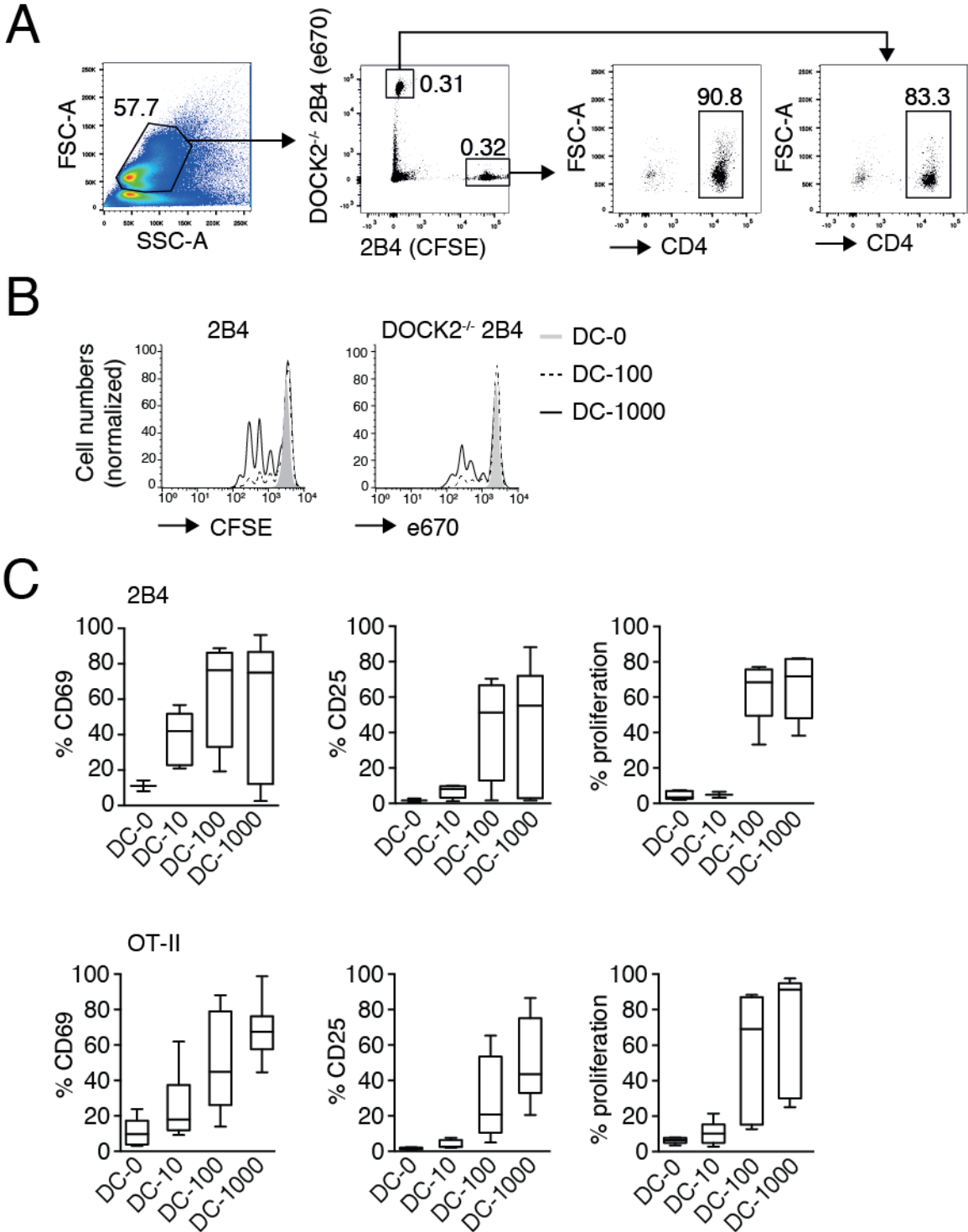


Figure S1

Figure S1. Flow cytometry analysis of 2B4 and DOCK2^{-/-} 2B4 T cells activation and proliferation, related to Figure 2. (A) Gating strategy for adoptively transferred 2B4 and DOCK2^{-/-} 2B4 T cells at 24 h post transfer. (B) Representative flow cytometry histograms for proliferation, measured as CFSE or e670 dilution of 2B4 and DOCK2^{-/-} 2B4 T cells at 48 h post transfer. (C) CD69/CD25 expression at 24 h post transfer and proliferation of 2B4 and OT-II T cells at 48 h post transfer under DC-0, DC-10, DC-100 and DC-1000 priming conditions. DC-10 priming induced only limited CD25 expression and proliferation in both TCR transgenic systems.