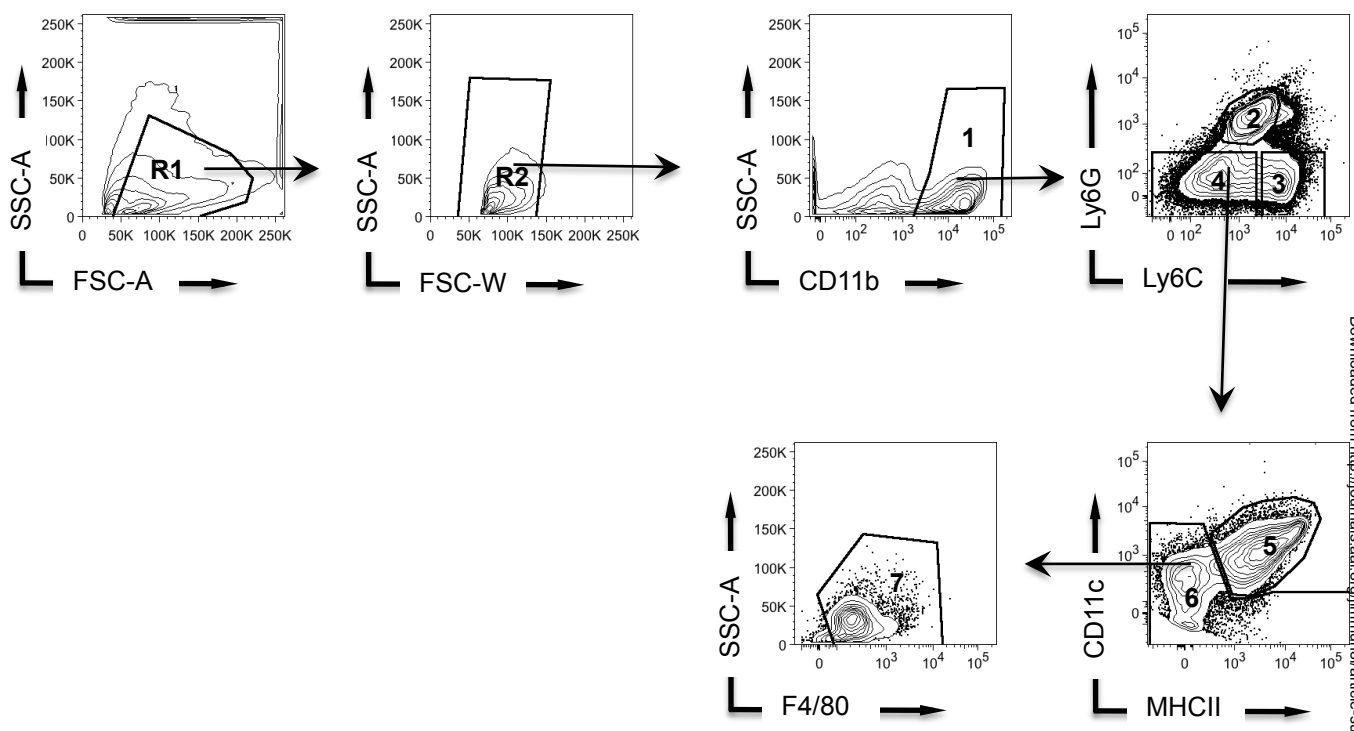
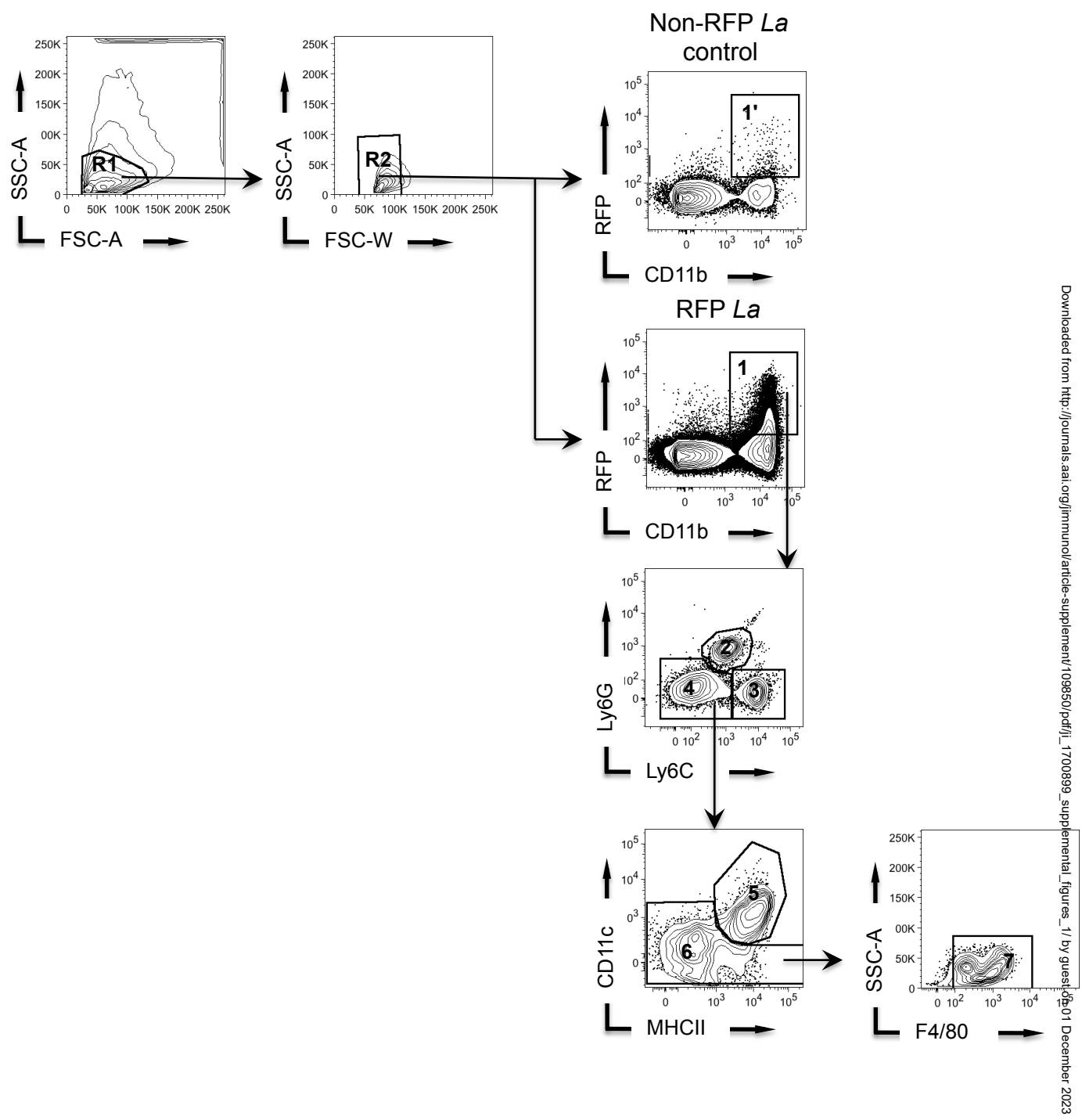


# Figure S1



**Figure S1: Gating strategy to determine phagocytic cells populations.** The gate identification and cell markers are: 1 - Phagocytic cells (CD11b<sup>+</sup>); 2 - Neutrophils (CD11b<sup>+</sup>Ly6G<sup>+</sup>Ly6C<sup>int</sup>); 3 - Ly6C<sup>hi</sup> monocytes/Inflammatory monocytes (CD11b<sup>+</sup>Ly6G<sup>+</sup>Ly6C<sup>hi</sup>); 4 - Macrophages + DCs (CD11b<sup>+</sup>Ly6G<sup>+</sup>Ly6C<sup>-</sup>); 5 - DCs (CD11b<sup>+</sup>Ly6G<sup>+</sup>Ly6C<sup>-</sup>CD11c<sup>+</sup>MHCII<sup>+</sup>); 6 - Macrophages + indeterminate populations (CD11b<sup>+</sup>Ly6G<sup>+</sup>Ly6C<sup>-</sup>CD11c<sup>-</sup>); 7 - Macrophages (CD11b<sup>+</sup>Ly6G<sup>+</sup>Ly6C<sup>-</sup>CD11c<sup>-</sup>F4/80<sup>+</sup>).

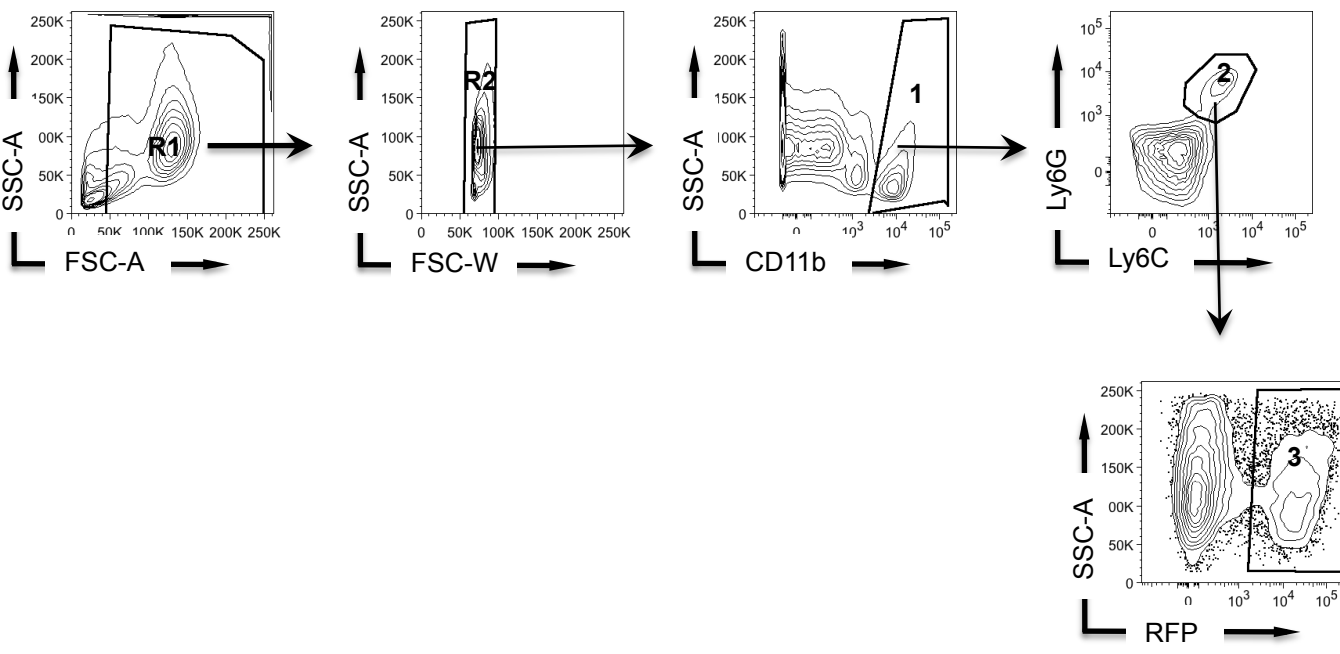
Figure S2



Downloaded from [http://journals.aai.org/jimmunol/article-supplement/109850/pdf/ji\\_1700899\\_supplemental\\_figures\\_1](http://journals.aai.org/jimmunol/article-supplement/109850/pdf/ji_1700899_supplemental_figures_1) by guest on 01 December 2023

**Figure S2: Gating strategy to determine infected phagocytic cells populations.** The gate identification and cell markers are: 1 - Infected phagocytic cells (CD11b<sup>+</sup>RFP<sup>+</sup>); 1' - Infected non-RFP phagocytic cells (CD11b<sup>+</sup>RFP<sup>+</sup>); 2 - Neutrophils (CD11b<sup>+</sup>RFP<sup>+</sup>Ly6G<sup>+</sup>Ly6C<sup>int</sup>); 3 - Ly6C<sup>hi</sup> monocytes/Inflammatory monocytes (CD11b<sup>+</sup>RFP<sup>+</sup>Ly6G<sup>+</sup>Ly6C<sup>hi</sup>); 4 - Macrophages + DCs (CD11b<sup>+</sup>RFP<sup>+</sup>Ly6G<sup>+</sup>Ly6C<sup>-</sup>); 5 - DCs (CD11b<sup>+</sup>RFP<sup>+</sup>Ly6G<sup>+</sup>Ly6C<sup>-</sup>CD11c<sup>+</sup>MHCII<sup>+</sup>); 6 - Macrophages + indeterminate populations (CD11b<sup>+</sup>RFP<sup>+</sup>Ly6G<sup>+</sup>Ly6C<sup>-</sup>CD11c<sup>-</sup>); 7 - Macrophages (CD11b<sup>+</sup>RFP<sup>+</sup>Ly6G<sup>+</sup>Ly6C<sup>-</sup>CD11c<sup>-</sup>F4/80<sup>+</sup>).

Figure S3



**Figure S3: Gating strategy used in apoptosis/necrosis experiments to determine infected neutrophils (8 weeks post-infection).** The gate identification and cell markers are: 1 - Phagocytic cells (CD11b<sup>+</sup>); 2 - Neutrophils (CD11b<sup>+</sup>Ly6G<sup>+</sup>Ly6C<sup>int</sup>); 3 - Infected neutrophils (CD11b<sup>+</sup>Ly6G<sup>+</sup>Ly6C<sup>int</sup>RFP<sup>+</sup>). The cell populations 2 and 3 were used to determine the gates represented in Figures 4 and 5.