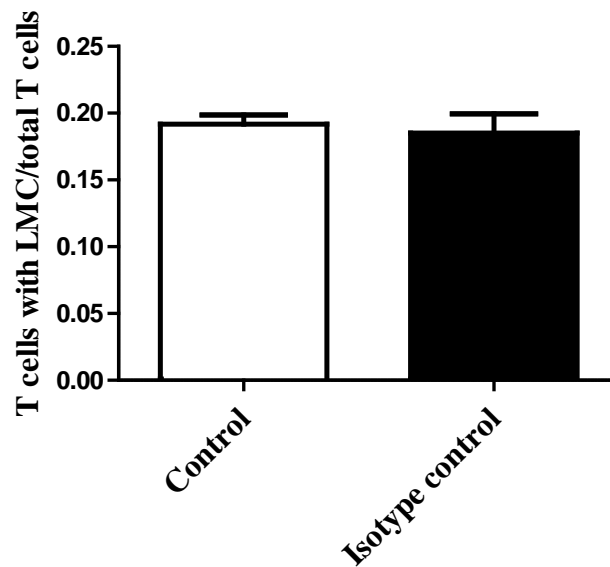
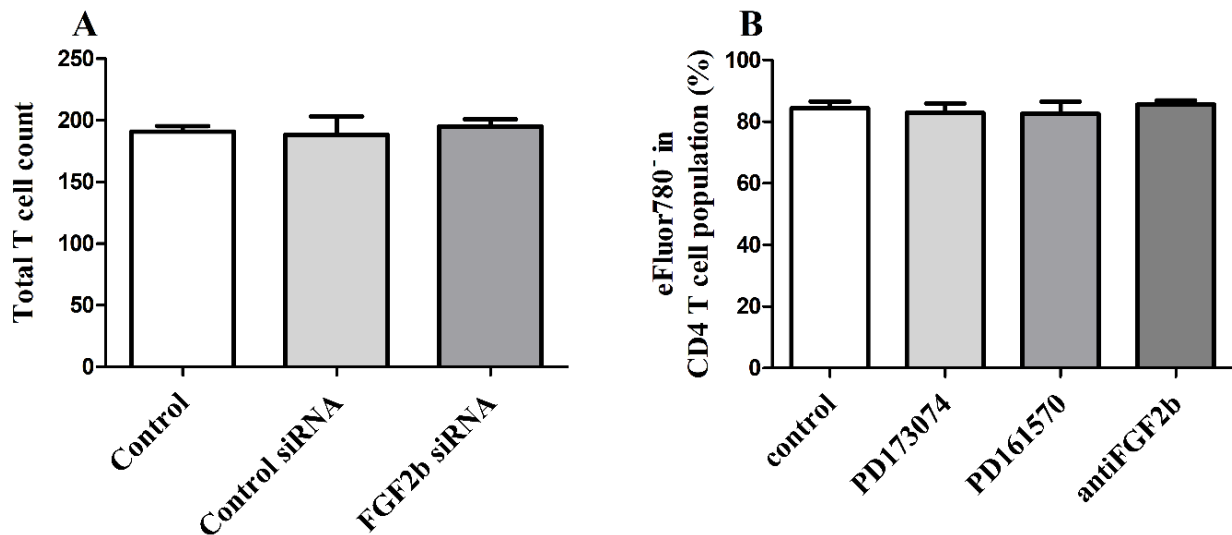


Supplemental Figure. 1



Supplemental Figure 1. Rabbit IgG isotype control did not affect LMC formation by CD4 T cells. CD4 T cells were stained with calcein AM and co-cultured with ASMCs with or without rabbit IgG isotype control for 24h. After fixation, LMC formation was visualized and quantified by fluorescence microscopy (n=6). Data are mean±1SEM, P>0.5, Student's t-test.

Supplemental Figure. 2



Supplemental Figure 2. Effects of FGF2b siRNA, anti FGF2b antibody, PD173074 and PD161570 on CD4 T cells. (A) ASMCs were transfected with either control siRNA or anti FGF2b siRNA and co-cultured with calcein AM stained CD4 T cells. Total CD4 T cells were counted by fluorescence microscopy ($n \geq 190$ cells per replicate) ($n=9-12$). (B) After 24 hours co-culture with ASMCs in the presence of either PD173074, PD161570 or anti FGF2b, CD4 T cells were stained with a viability dye and anti CD4 antibody. The frequency of viable CD4 T cells was assessed by flow cytometry ($n=9-15$). Data are mean \pm 1SEM; $P > 0.5$, one-way ANOVA.