

Figure S1

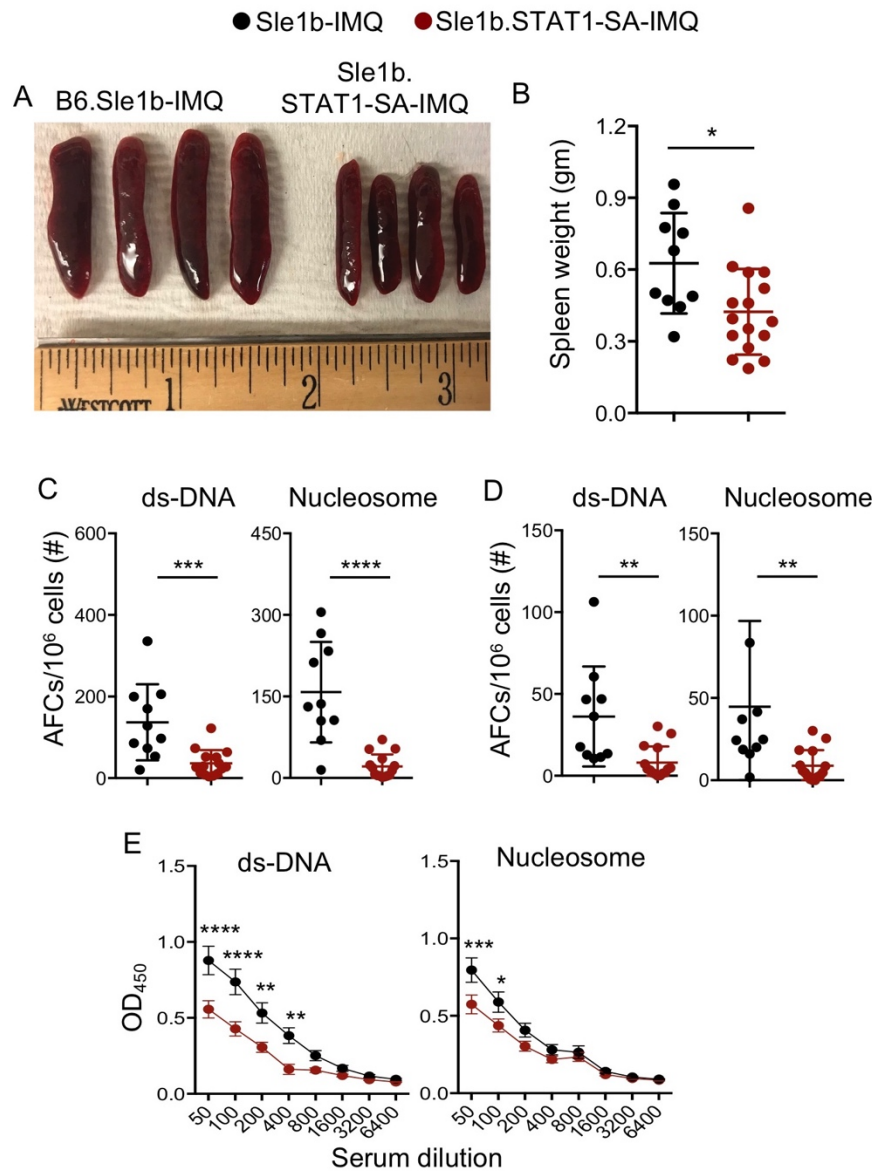


Figure S1. STAT1-pS727 promotes TLR7-mediated autoimmune responses. B6.Sle1b and Sle1b.STAT1-SA mice were treated with IMQ for 8 wks. The number of splenic (A) and BM (B) derived dsDNA- and nucleosome-specific AFCs are shown. Flow cytometric data show the percentages of GC (C) and Tfh (D) cells. (E) dsDNA-, and nucleosome-specific serum antibody titers. These data represent two experiments and each symbol represents a mouse. Statistical analysis was performed by unpaired, nonparametric Mann-Whitney Student's t-test or two-way ANOVA, with a follow-up Sidak multiple-comparison test. *, P < 0.05; **, P < 0.01; ***, P < 0.001; ****, P < 0.0001.