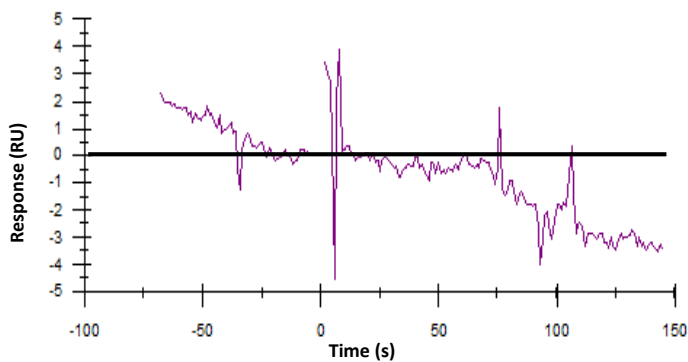
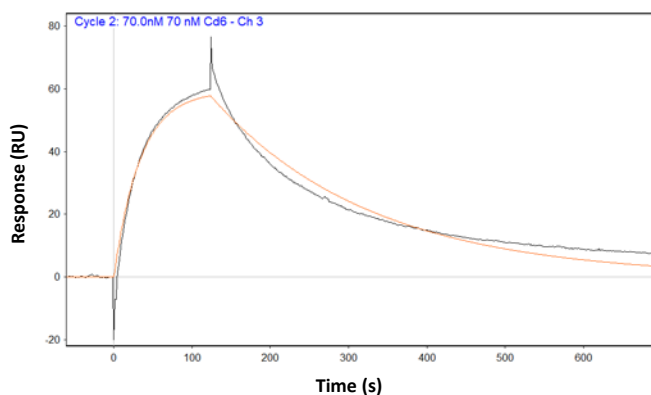


**A****B**

**Figure S1. Measurement of binding affinity of ILT3.Fc controls to CD166 by surface plasmon resonance.**

(A) Negative control, human IgG1 Fc fragment (2  $\mu$ M) and (B) positive control, CD6.Fc (70 nM) were tested for their binding to immobilized CD166-His.  $K_d$  of CD6.Fc binding to CD166 was estimated to be 14 nM. IgG1 Fc fragment at increasing concentrations (2-20  $\mu$ M) did not bind to immobilized CD166. (RU: Response Unit)