

Figure S1.

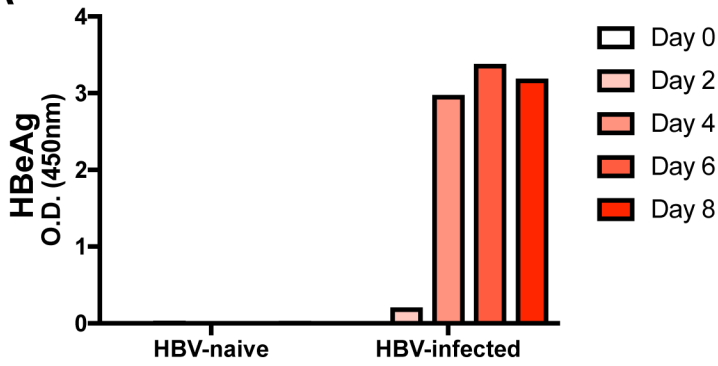
HBV Core Peptides	Sequence	HBV Core Peptides	Sequence
HBV Core Peptide #1	MDIDPYKEFGATVEL	HBV Core Peptide #23	VNTNMGLKFRQLLWF
HBV Core Peptide #2	PYKEFGATVELLSFL	HBV Core Peptide #24	MGLKFRQLLWFHISC
HBV Core Peptide #3	FGATVELLSFLPSDF	HBV Core Peptide #25	FRQLLWFHISCLTFG
HBV Core Peptide #4	VELLSFLPSDFFPSV	HBV Core Peptide #26	LWFHISCLTFGRETV
HBV Core Peptide #5	SFLPSDFFPSVRDLL	HBV Core Peptide #27	ISCLTFGRETVIEYLL
HBV Core Peptide #6	SDFFPSVRDLLDTAS	HBV Core Peptide #28	TFGRETVIEYLVSFQ
HBV Core Peptide #7	PSVRDLLDTASALYR	HBV Core Peptide #29	ETVIEYLVSFQVWIR
HBV Core Peptide #8	DLLDTASALYREALE	HBV Core Peptide #30	EYLVSFQVWIRTPPA
HBV Core Peptide #9	TASALYREALESPFH	HBV Core Peptide #31	SFGVWIRTPPAYRPP
HBV Core Peptide #10	LYREALESPFHCSFH	HBV Core Peptide #32	WIRTPPAYRPPNAPIL
HBV Core Peptide #11	ALESPEHCSFHHTAL	HBV Core Peptide #33	PPAYRPPNAPILSTL
HBV Core Peptide #12	PEHCSFHHTALRQAIL	HBV Core Peptide #34	RPPNAPILSTLPETT
HBV Core Peptide #13	SPHHTALRQAILCWG	HBV Core Peptide #35	APILSTLPETTIVRR
HBV Core Peptide #14	TALRQAILCWGELMT	HBV Core Peptide #36	STLPETTIVRRRGRS
HBV Core Peptide #15	QAILCWGELMTLATW	HBV Core Peptide #37	ETTVRRRGRSPRRR
HBV Core Peptide #16	CWGELMTLATWGVN	HBV Core Peptide #38	VRRRGRSPRRRTPSP
HBV Core Peptide #17	LMTLATWGVNLEDP	HBV Core Peptide #39	GRSPRRRTPSPRRR
HBV Core Peptide #18	ATWGVNLEDPASRD	HBV Core Peptide #40	RRRTPSPRRRRSQSP
HBV Core Peptide #19	GVNLEDPASRDLVVS	HBV Core Peptide #41	PSPRRRRSQSPRRR
HBV Core Peptide #20	EDPASRDLVVSYVNT	HBV Core Peptide #42	RRRSQSPRRRRSQSR
HBV Core Peptide #21	SRDLVVSYVNTNMGL	HBV Core Peptide #43	QSPRRRRSQSRESQC
HBV Core Peptide #22	VVSYVNTNMGLKFRQ	HBV Core Peptide #44	RRRSQSRESQC

Figure S1. Overlapping 15-mer peptides spanning HBV Core antigen. Table shows the name and amino acid sequences of the overlapping HBV Core peptides used for CD8+ T cell stimulation. Green text indicates peptides binding MHC-E, blue text indicates peptides binding MHC-II, and black text indicates peptides that did not elicit a CD8+ T cell response in any of the RM assessed.

MHC-II Bound
MHC-E Bound

Figure S2.

A



B

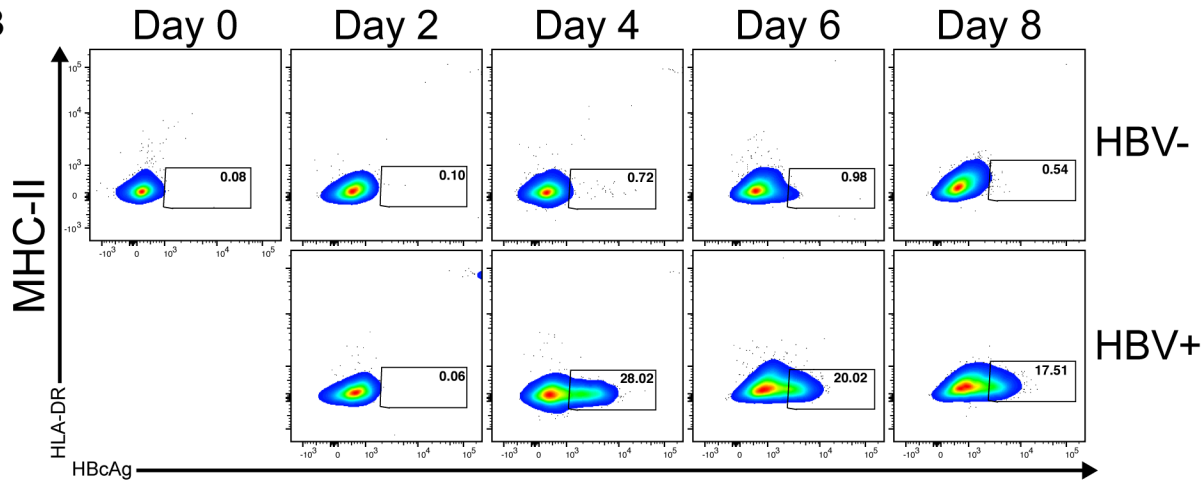


Figure S2. Longitudinal analysis of HBV infection kinetics in primary human hepatocytes *in vitro*. A) HBV e antigen ELISA shows high level of infection in these PH and infection kinetics match HBcAg staining (see panel B). B) HBV naive and HBV-infected PH from HD1 were intracellularly stained for HBcAg longitudinally. Shows MHC-II vs HBcAg staining fluorescence.

Figure S3.

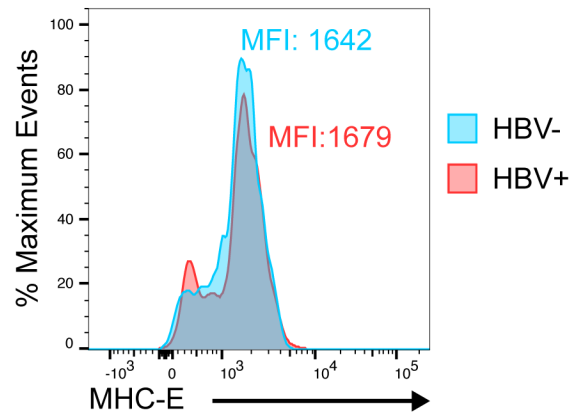


Figure S3. MHC-E expression on HBV naive and HBV-infected HD PH. Overlay of histograms representing HBV naive and HBV-infected HD PH in the same HBV challenged well. Shows mean fluorescence intensity of MHC-E expression on each of these populations.