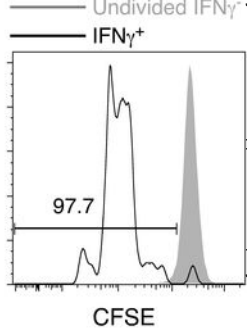
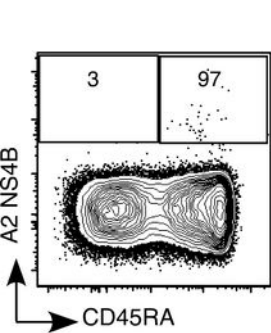


## Supplemental Figure 1

Proliferative potential of CD45RA<sup>+</sup> CCR7<sup>-</sup> CD8<sup>+</sup> T cells. Cells from one individual vaccinated two years previously were analyzed for CD45RA expression ex-vivo (left) and proliferative potential in vitro (right). For the in vitro proliferation, PBMC from this individual were labeled with CFSE and stimulated with the A2-NS4B peptide for 6 days and the end of which a further peptide stimulation for 6 hours was done followed by ICC to identify responding cells. The histogram shows CFSE intensity by the IFN $\gamma$ <sup>+</sup> cells compared to the cells that have not divided



Supplemental figure 1