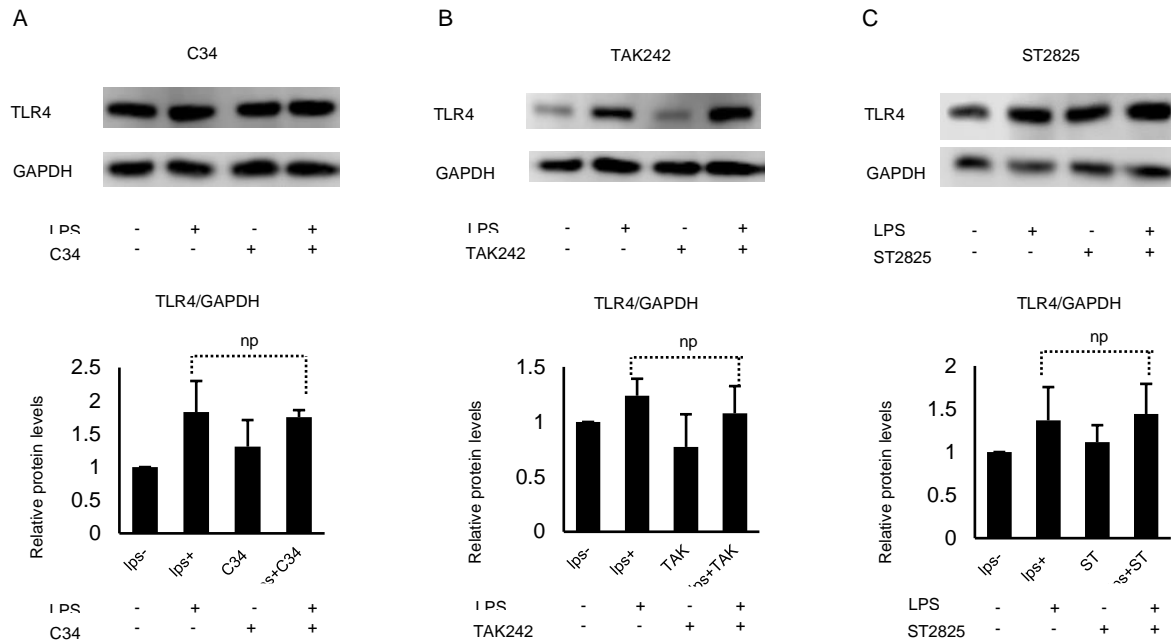


Supplementary Figure 1. CFSE dilution assay.

Purified human CD34⁺ cells were labeled with CFSE and cultured for 7 days in a G-CSF medium, with or without 10 µg/mL LPS. On the indicated days, the cells were collected and analyzed by flow cytometry. Top panel: CFSE expression levels in total cells. Second panel: CFSE expression levels in CD34 negative cells. Third panel: CFSE expression levels in CD34 positive cells. Bottom panel: CFSE expression levels in CD15 positive cells. Results are representative of four independent experiments.



Supplementary Figure 2. TLR4 expression on GMP.

CD34⁺ cells were pretreated with (A) 10 μ M C34, (B) 10 μ M TAK242 or (C) 2.5 μ M ST2825 for 6 h, then cultured with or without the addition of 10 μ g/mL LPS, for three days. Then cells were extracted for immunoblotting analysis. GAPDH expression was considered as the loading control. Data represent mean \pm SD of three independent experiments. np indicates no significance.