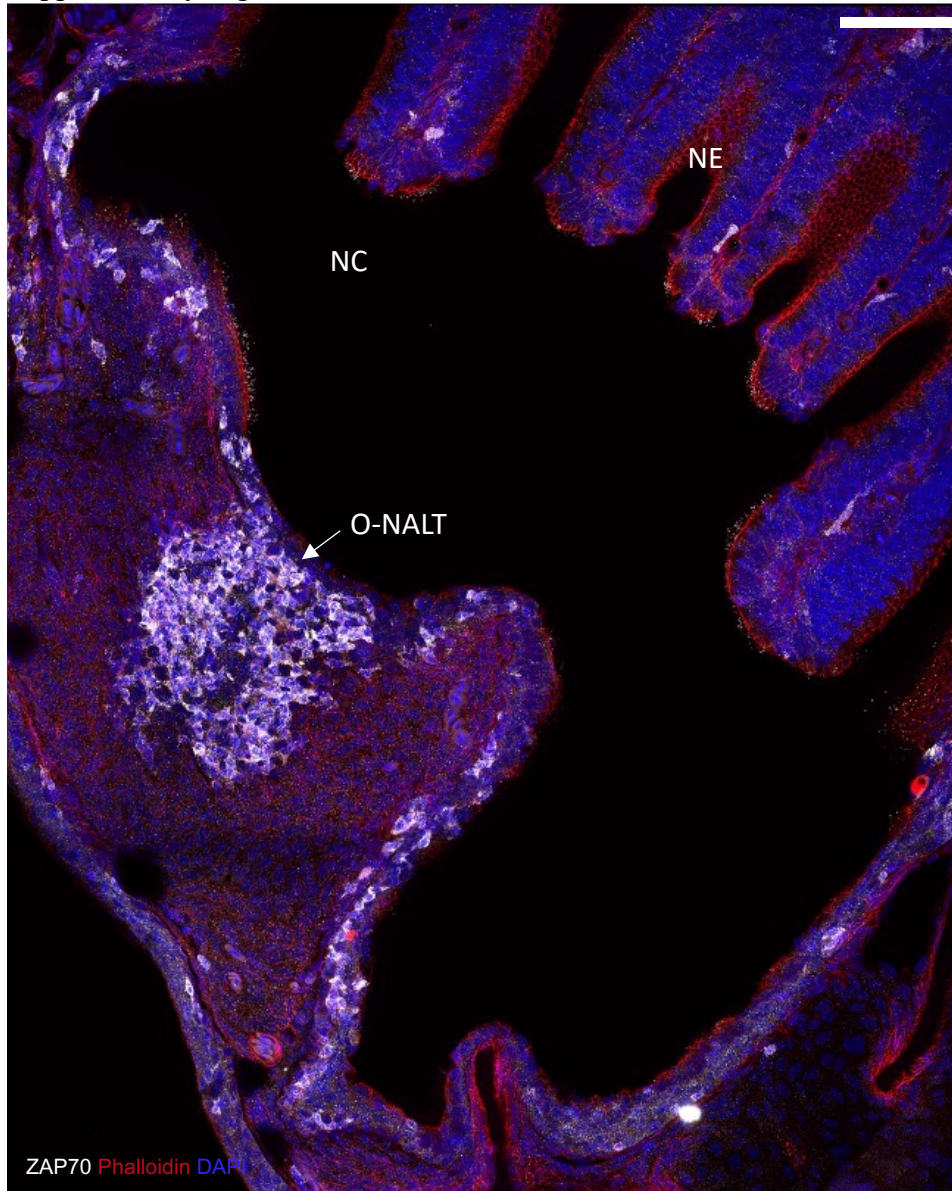
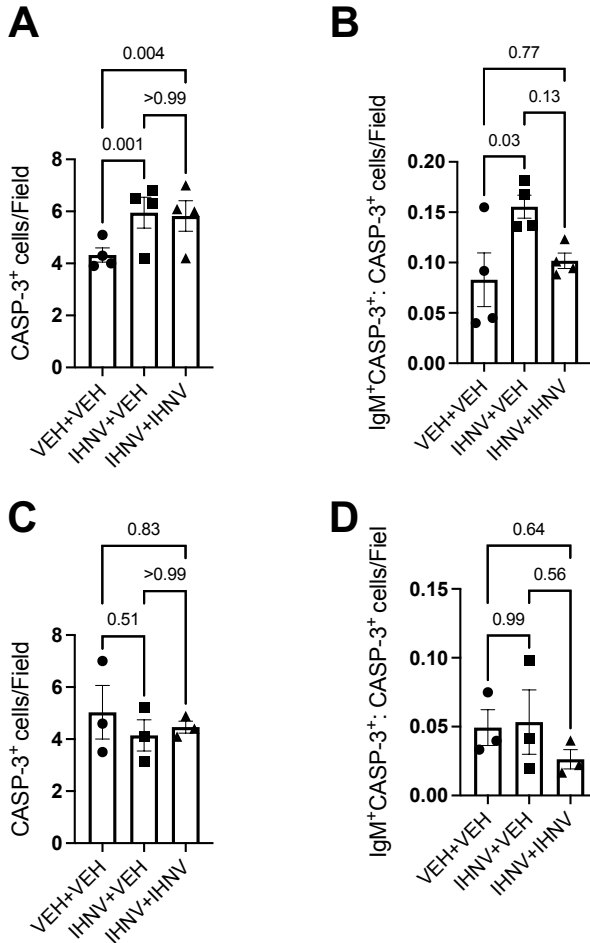


Supplementary Figure 1



**Supplementary Figure 1:** Zebrafish nasal cavity contains an O-NALT. Confocal image of a control adult zebrafish nasal cavity stained with anti-ZAP70 antibody (white) showing a lymphoid structure similar to the O-NALT found in trout. Sections were stained with phalloidin (red) and cell nuclei (blue) were stained with DAPI. NC: nasal cavity; NE: neuroepithelium. Scale bar: 50  $\mu\text{m}$ .

Supplementary Figure 2



**Supplementary Figure 2:** Patterns of apoptosis in the O-NALT and olfactory tips of control and vaccinated rainbow trout. Quantification of CASP-3<sup>+</sup> cells in the O-NALT (A) and tips (C). IgM<sup>+</sup>CASP-3<sup>+</sup> cell counts normalized to the total number of CASP-3<sup>+</sup> cells in the O-NALT (B) and tips (D). IgM<sup>+</sup>CASP-3<sup>+</sup> cell counts in each field were divided by the number of CASP-3<sup>+</sup> cells in the same field. Each dot represents the average of ten images acquired from the same animal ( $n=4$ ).