

Figure S3

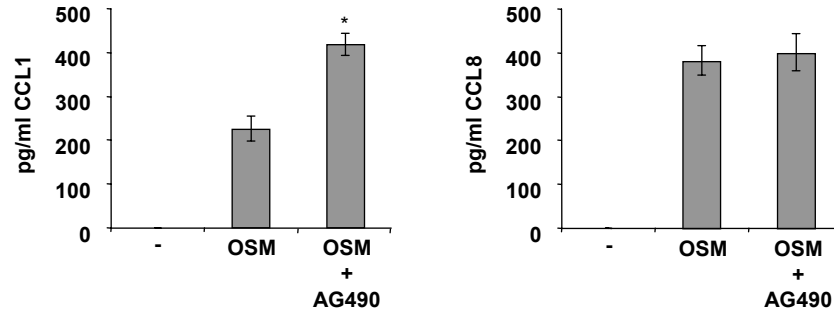


Fig.S3: HDFs were pretreated with 10 μ M AG490 for 30 min, exposed to 20 ng/ml OSM for 3 h and then the protein amounts of CCL1 or CCL8 in culture supernatants were measured by ELISA. Data are expressed as mean \pm S.D. (n = 4). * = $p < 0.05$ versus control.