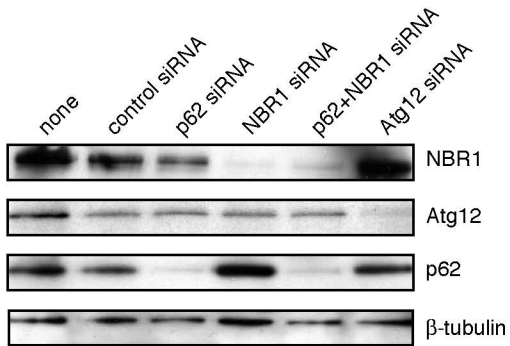


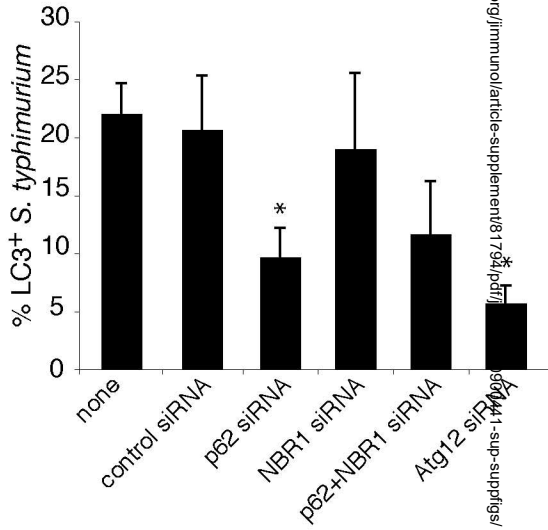
Supplementary Figure 1. NBR1 is not required for autophagy of *S. typhimurium*. A) HeLa cells were transfected with control siRNA, p62 siRNA, NBR1 or Atg12 siRNA for 48 h. Protein was harvested and analyzed by Western Blot using a monoclonal antibody to p62 and NBR1. β -tubulin was used as a loading control. (B) HeLa cells were transfected as in A, and also transfected with RFP-LC3. Cells were then infected with wild type *S. typhimurium* and fixed at 1 h p.i. The percentage of LC3⁺ *S. typhimurium* was enumerated by fluorescence microscopy. At least 100 bacteria were counted for each condition. The average \pm s.d. is shown for three independent experiments (* indicates $P < 0.05$).

Supplementary Figure 2. Expression of p62 limits intracellular replication of *S. typhimurium*. HeLa cells were transfected with control siRNA, p62 siRNA or atg12 siRNA for 48 h before infection with wild type *S. typhimurium* expressing RFP. Cells were then fixed at the indicated time points. The percentage of cells, which have 20 or more intracellular bacteria was then enumerated. The average \pm s.d. is shown for three independent experiments. Asterisks indicate a significant difference from control siRNA transfected cells at the corresponding time point ($P < 0.05$) as determined by two-way ANOVA and Bonferroni posttests.

A



B



% infected cells with >20 bacteria

