

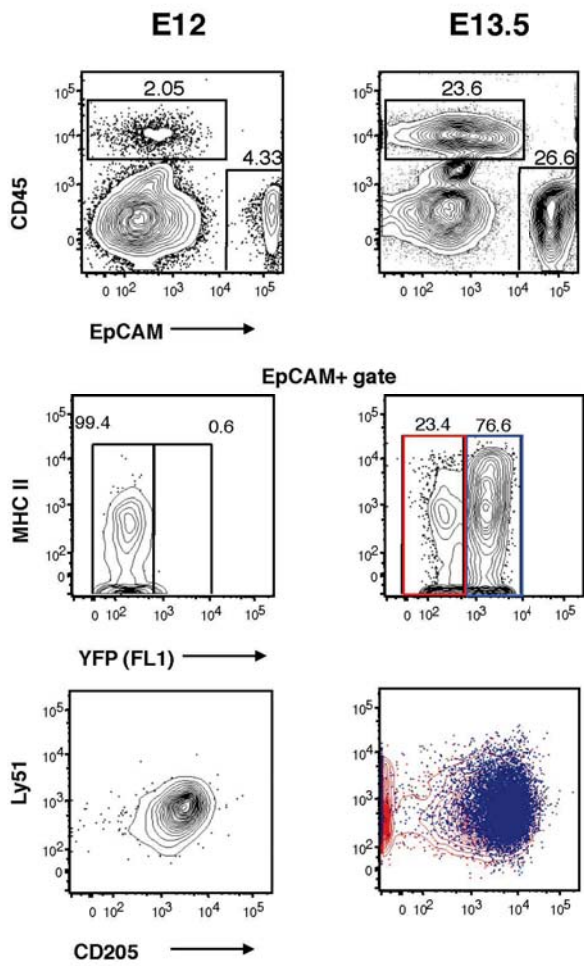
Supplemental figure legends:

Supplemental figure 1 - *Il7*⁺TECs emerge beyond E12. Flow cytometric analysis of E12 and E13.5 stages of fetal thymi from IL-7 reporter mice following stromal isolation. (i) Augment in the frequency of CD45⁺ cells. (ii) Analysis was performed on thymic stromal cells (CD45⁻ EpCAM⁺ gate). *Il7*⁺TECs emerge possibly upon E12. Comparative phenotypic analysis of *Il7*⁺ (color-coded blue) and YFP⁻ (color-coded red) TECs in relation to the expression of CD205 and Ly51.

Supplemental figure 2 – A) Numbers of CD45⁺ cells isolated from immuno-competent and *Rag2*^{-/-}*Il2rg*^{-/-} IL-7 reporter mice at 4-6 wks of age. B) Immunohistochemical analysis of *Rag2*^{-/-}*Il2rg*^{-/-} non-transgenic littermate (as in Fig. 2 C). (C) Immunohistochemical analysis of *Rag2*^{-/-}*Il2rg*^{-/-} (Tg) and immuno-competent (Tg) IL-7 reporter mice thymi stained with the indicated Ab combinations.

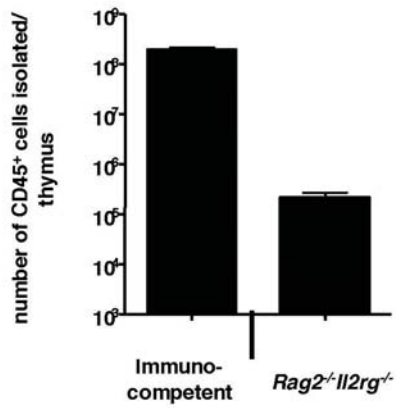
Supplemental figure 3 – A) i) Numbers of CD45⁺ cells isolated from *Rag2*^{-/-}*Il2rg*^{-/-} IL-7 reporter transgenic mice at 4 wks post-reconstitution with *Rag2*^{-/-}, *Tcra*^{-/-}, and WT precursors. ii) Representative flow cytometric analysis of T cell development in lymphopenic (*Rag2*^{-/-}*Il2rg*^{-/-}) IL-7 reporter mice 4 wks post-reconstitution with *Tcra*^{-/-} and WT BM precursors. B) i) Flow cytometric analysis of *Rag2*^{-/-}*Il2rg*^{-/-} IL-7 reporter transgenic mice non-irradiated and analyzed at 8 wks of age (control). ii) Comparison of the frequency of *Il7*⁺ and YFP⁻ TECs in 8 wks old control (n=3) and *Rag2*^{-/-}*Il2rg*^{-/-} IL-7 reporter mice irradiated at 4 wks and left unreconstituted for 4 wks (conditioned) (n=12, same as unreconstituted mice figure 3).

Supplemental Figure 1

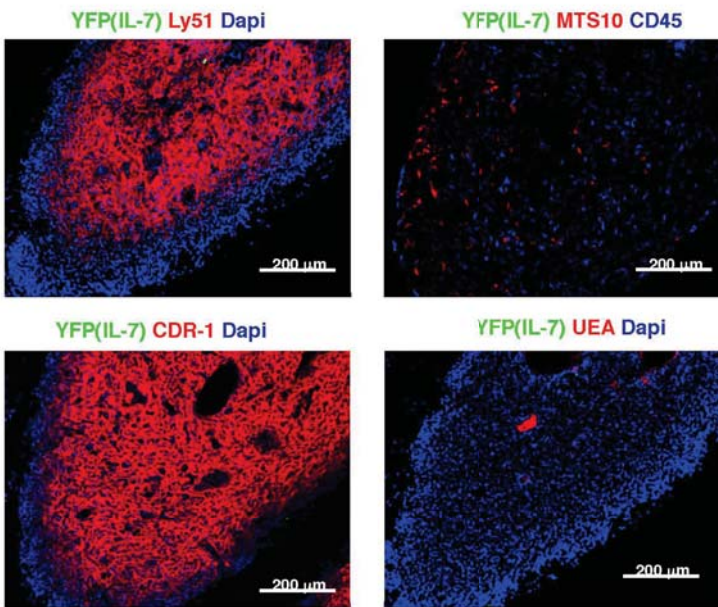


Supplemental Figure 2

A

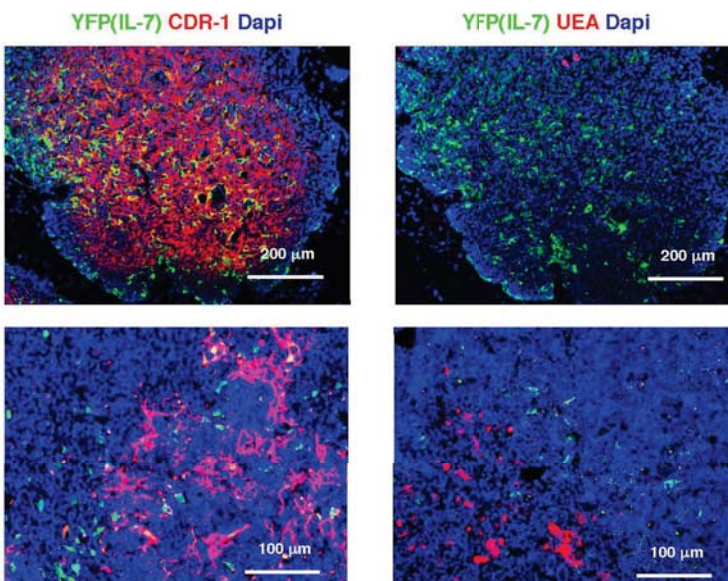


B



Rag2^{-/-}Il2rg^{-/-} WT

C



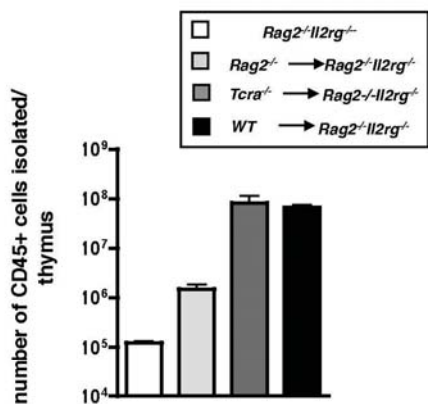
Rag2^{-/-}Il2rg^{-/-} Tg

Immuno-competent Tg

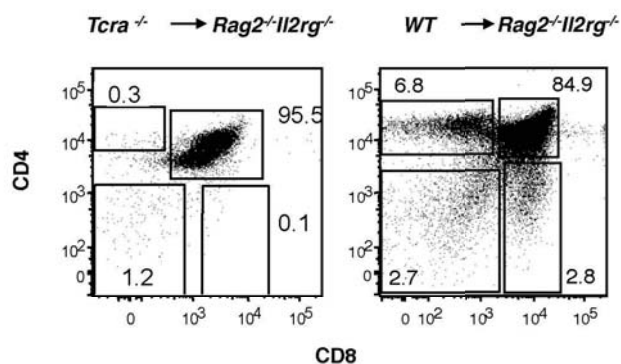
Supplemental Figure 3

A

i

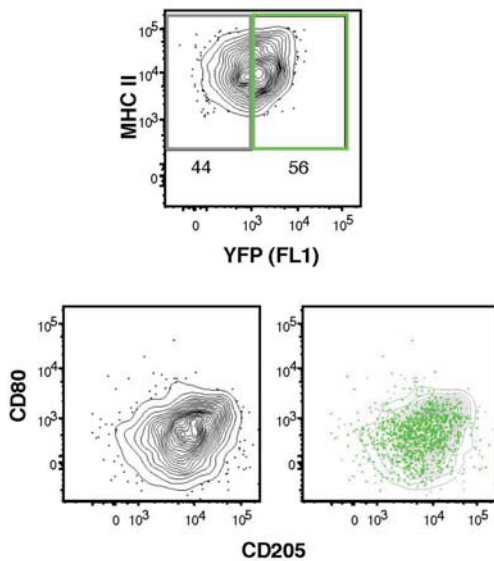


ii



B

i



ii

