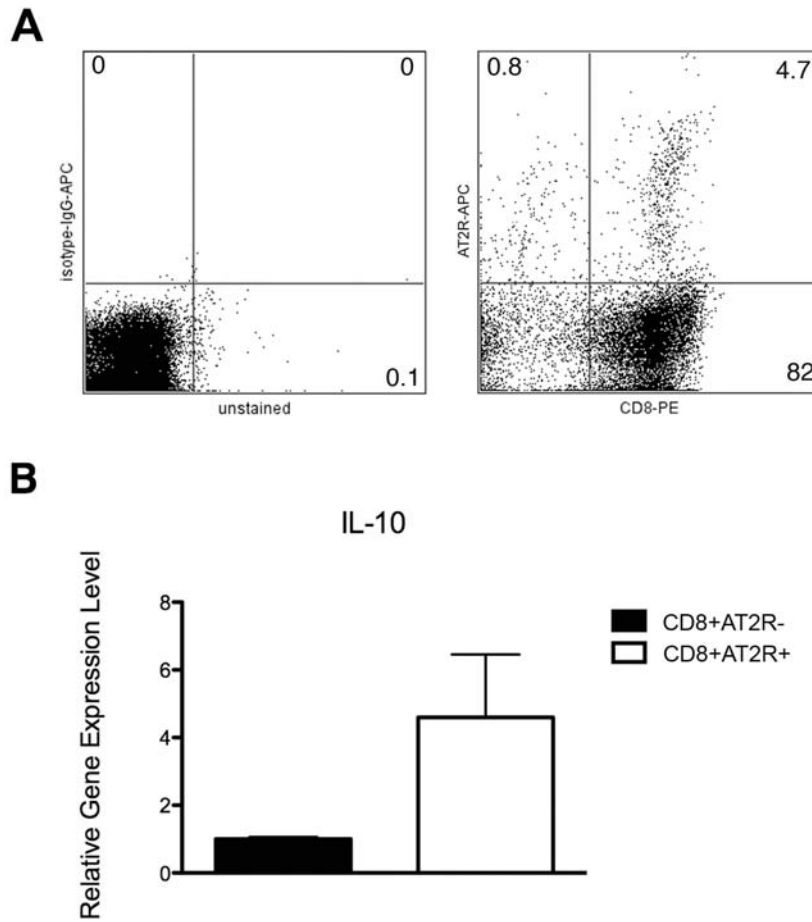
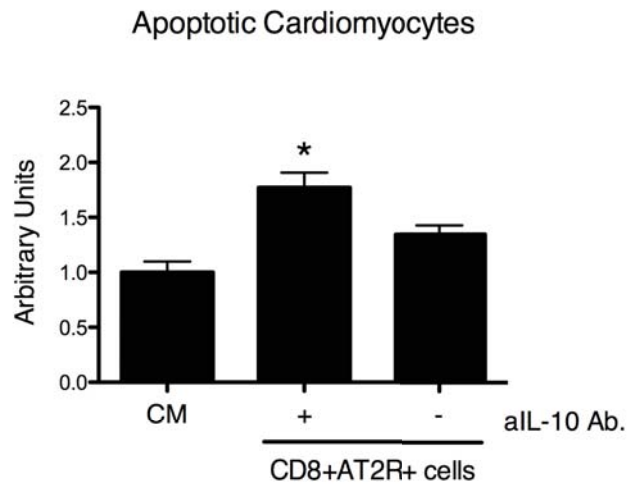




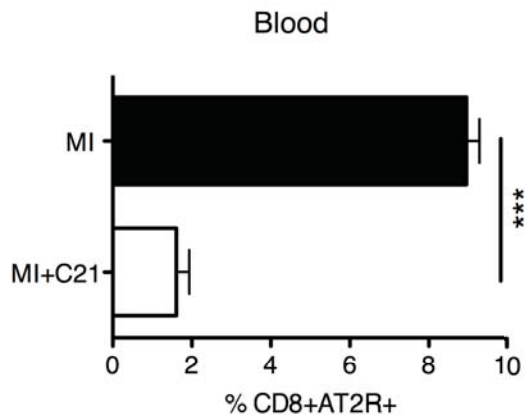
Supplemental FIGURE 1. AT2R mRNA in CD8+AT2R+ T cells. The mRNA abundance of AT2R in post-infarct splenic CD8+AT2R+ and CD8+AT2R- T cells. AT2R mRNA was analyzed by Real-Time PCR (n=4). *P<0.05 (vs. CD8+AT2R-).



Supplemental FIGURE 2. The CD8+AT2R+ T cell population in humans. The CD8+AT2R+ T cells were isolated from peripheral blood of healthy donors and analyzed by flow cytometry. A, FACS plots of CD8+AT2R+ T cells and isotype control for AT2R Ab. B, There was a tendency towards increased IL-10 mRNA in the CD8+AT2R+ T cells (vs. CD8+AT2R-, n=4)



Supplemental FIGURE 3. Non-cytotoxic effect of post-infarct CD8+AT2R+ cells is abolished by neutralizing IL-10 antibody *in vitro*. Apoptotic rate of CM co-cultured with splenic CD8+AT2R+ T cells (n=3) in presence or absence of anti IL-10 antibody (aIL-10 Ab) was presented as x-fold of apoptotic CM cultured alone. *P<0.05 (vs. CM)



Supplemental FIGURE 4. The CD8+AT2R+ T cell population in blood upon AT2R stimulation *in vivo*. The CD8+AT2R+ T cells were isolated from peripheral blood of infarcted animals upon C21 (MI+C21, n=6) or vehicle saline (MI, n=3) treatment and analyzed by flow cytometry. *** P<0.0002 (versus MI)

Supplemental Table I – Primers sequences for Real-Time PCR

Gene	Primer sequences for SYBR Green® Real-Time PCR
Rat 18s	Forward: 5' - ggg Agg TAg TgA CgA AAA ATA ACA AT – 3' Reverse: 5' - TTgC CCT CCA ATg gAT CCT – 3'
Rat AT2R	Forward: 5' - AAT CCC Tgg CAA gCA TCT TAT gT – 3' Reverse : 5' - CggAAATAAAATgTTggCAATg – 3'
Rat IL-10	Forward: 5' - AAg gCA gTg gAg CAg gTg AA – 3' Reverse: 5' - CgT Agg CTT CTA TgC AgT TgA TgA – 3'
Rat IL-1β	Forward: 5' - ggg TTg AAT CTA TAC CTg TCC TgT gT – 3' Reverse: 5' - TTg ggT ATT gTT Tgg gAT CCA – 3'
Rat IL-2	Forward: 5' - CCC CAT gAT gCT CAC gTT TA – 3' Reverse: 5' - CAT TTT CCA ggC ACT gAA gAT gT – 3'
Rat INF-γ	Forward: 5' - Agg ATg CAT TCA TgA gCA TCg CC – 3' Reverse: 5' - CAC CgA CTC CTT TTC CgC TTC CT – 3'