

Supplemental Materials

Figure S1. miR-155 expression in wild-type, RIG-I-deficient, or TLR4-deficient macrophages stimulated with LPS

Peritoneal macrophages from wild-type, RIG-I-deficient, or TLR4-deficient mice were stimulated with 100 ng/ml LPS for 6 hrs, and then miR-155 expression was measured by qRT-PCR. Data are shown as mean \pm SD (n = 3) of one representative experiment. Similar results were obtained in three independent experiments. **, $P < 0.01$.

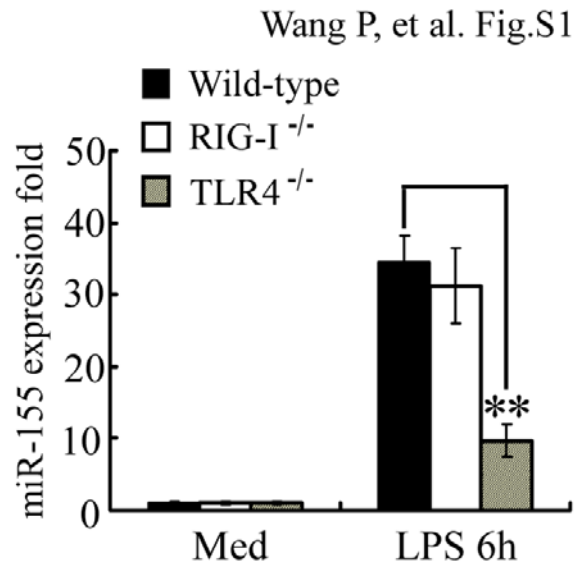


Figure S2. SOCS1 might be molecular target of miR-155

Shown is a sequence alignment of miR-155 and its putative conserved (among the indicated species) target sites in the 3'UTR of SOCS1, which was obtained from TargetScan (<http://www.targetscan.org>).

Wang P, et al. Fig.S2

```
3' ugGGGAUAGUGUUAUUCGUAUU 5' miR-155
      | | | | | | |
mmu 5' -CCGCUGUGCC---GCAGCAUUA 3' Socs1
hsa 5' CCCGCCGUGCAC -GCAGCAUUA 3'
Ptr 5' CCCGCCGUGCAC -GCAGCAUUA 3'
Rno 5' -CCGCCGUGCCC---GCAGCAUUA 3'
Cpo 5' CGCCCGUGUGCACGCAGCAUUA 3'
Cfa 5' -----CGCGCAC--GCAGCAUUA 3'
Eca 5' -----CGCGCAC--GCAGCAUUA 3'
```

Figure S3. The effects of miR-155 mimic or inhibitor on type I IFN signaling in macrophages at short time points.

Macrophages were transfected as in (Fig. 4A, 4B). After 48 hrs, recombinant murine IFN- β (100 U/ml) was added, and phosphorylation of STAT1, STAT2 and JAK1 was detected by immunoblot at indicated time and total STAT1, STAT2 and JAK1 as input controls. Similar results were obtained in at least three independent experiments.

Wang P, et al. Fig.S3

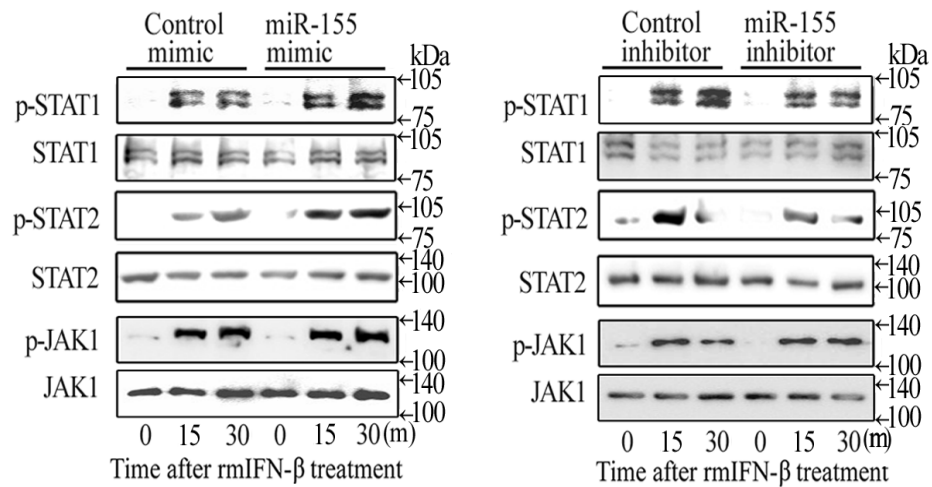


Figure S4. Induction of SOCS1 protein expression in mouse peritoneal macrophages by IFN- β and IFN- γ

Mouse peritoneal macrophages were stimulated with rmIFN- β (100 U/ml) or rmIFN- γ (100 U/ml). SOCS1 was detected by immunoblot 2 hrs post stimulation.

