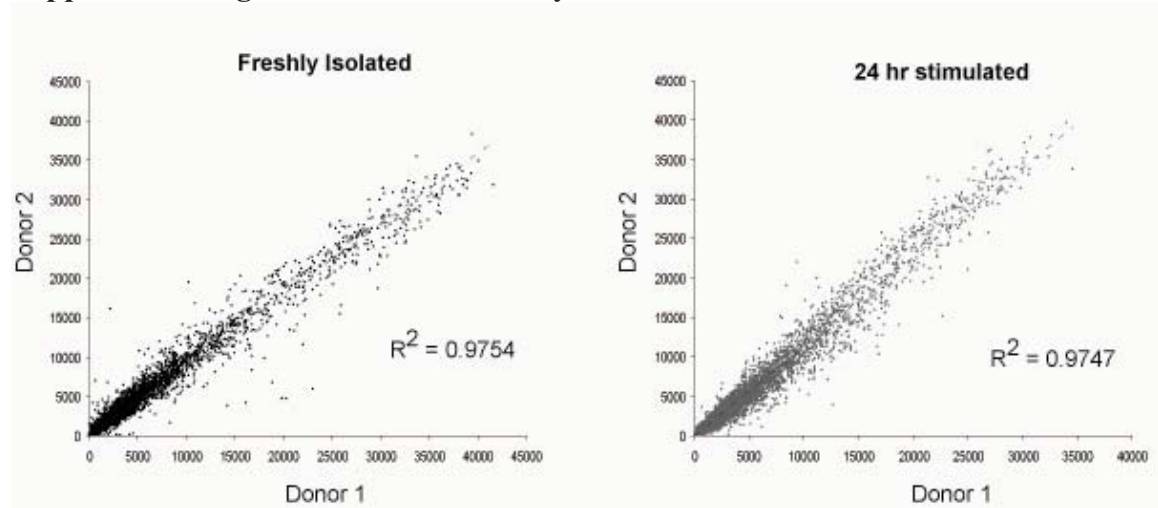
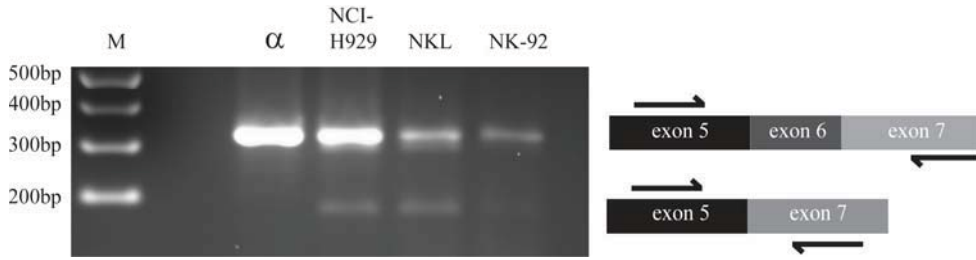


## Supplemental Material

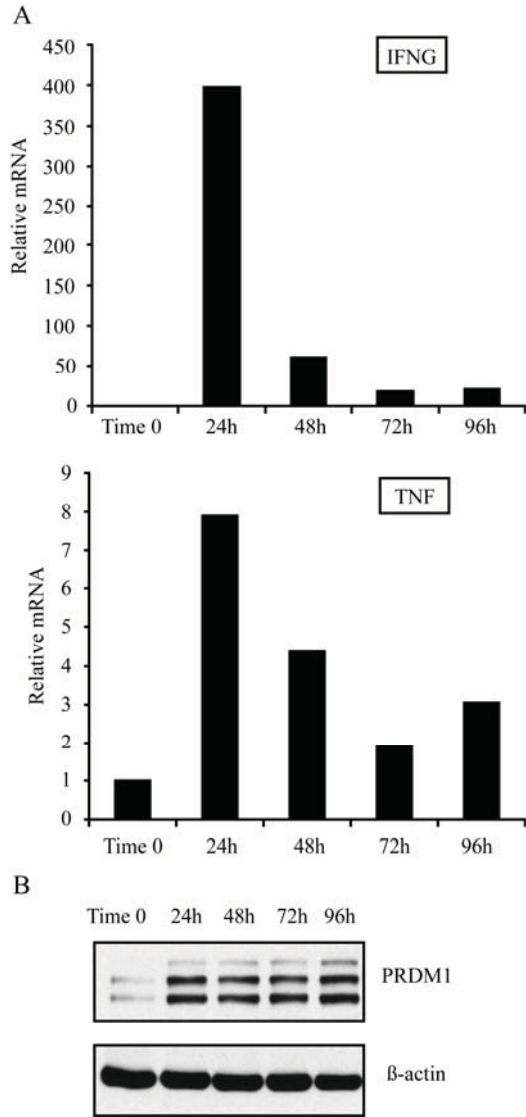
Supplemental Figure 1: GEP consistency between donors.



**Supplemental Figure 2: PCR verification of PRDM1 $\alpha$  $\Delta$ exon6 mRNA structure.**



### Supplemental Figure 3: Time Course of Cytokine mRNA and PRDM1 protein Levels



# Supplemental Table 1

3-fold or more up-regulated

	Fold Change Donor 1	Fold Change Donor 2	GenBank ID	Gene Symbol
206975_at	4213.85	1686.35	NM_000595.2	LTA
210229_s_at	3408.78	1649.57	NM_000758.2	CSF2
221111_at	1469.52	366.94	NM_018402.1	IL26
230102_at	699.90	102.30	NM_004454	ETV5
220118_at	584.03	542.01	NM_014383.1	ZBTB32
226731_at	514.15	40.95	NM_181501	ITGA1
223767_at	474.60	398.08	NM_020370.1	GPR84
219424_at	423.52	1281.90	NM_005755.2	EBI3
207536_s_at	342.48	236.24	NM_001561.4	TNFRSF9
210831_s_at	341.59	163.69	NM_000957.2	PTGER3
202912_at	291.09	50.16	NM_001124.1	ADM
206341_at	277.84	521.07	NM_000417.1	IL2RA
225316_at	263.00	333.65	NM_032793.2	MFSD2
227860_at	170.62	115.99	NM_019609.3	CPXM
219911_s_at	155.44	195.27	NM_016354.3	SLC04A1
205546_at	155.05	267.78	NM_012449.2	STEAP1
210116_s_at	124.38	46.46	NM_000575.3	IL1A
207426_s_at	88.03	66.71	NM_003326.2	TNFSF4
209324_s_at	78.17	47.52	NM_002928.2	RGS16
217475_s_at	75.83	33.30	NM_005569.3	LIMK2
205249_at	73.62	41.59	NM_000399.2	EGR2
224461_s_at	64.64	21.87	NM_032797.4	AMID
210446_s_at	62.17	67.73	NM_002561.2	P2RX5
207113_s_at	58.77	89.20	NM_006594.2	TNF
216841_s_at	51.40	52.60	NM_000636.2	SOD2
204014_at	46.25	15.56	NM_001394.5	DUSP4
202437_s_at	46.17	29.11	NM_000104.2	CYP1B1
223062_s_at	45.92	48.09	NM_058179.2	PSAT1
201631_s_at	43.65	27.35	NM_003897.2	IER3
227458_at	42.63	35.12	NM_014143	PDCD11
217997_at	42.11	55.78	NM_007350.3	PHLDA1
204533_at	41.79	49.03	NM_001565.1	CXCL10
205768_s_at	40.86	73.53	NM_003645.2	SLC27A2
210354_at	40.70	54.75	NM_000619.2	IFNG
203716_s_at	39.54	192.36	NM_001935.3	DPPI4
204032_at	39.43	26.58	NM_003567.2	BCAR3
223383_at	39.22	367.50	NM_032268.3	ZNRF1
210439_at	37.75	73.53	NM_012092.2	ICOS
224799_at	36.85	38.40	NM_019080.1	NDPIP2
205098_at	35.14	49.46	NM_001295.2	CCR1
218266_s_at	34.85	75.35	NM_014286.2	FREQ
208949_s_at	34.52	95.22	NM_002306.1	LGALS3
202431_s_at	34.44	83.94	NM_002467.3	MYC
206486_at	33.52	115.13	NM_002286.4	LAG3
230372_at	33.46	24.53	NM_005328	HAS2
214329_x_at	31.81	18.73	NM_003810	TNFSF10
218888_s_at	31.27	121.02	NM_018092.3	NETO2
225520_at	30.18	44.72	NM_015440.3	MTFHD1L
223454_at	29.30	21.28	NM_022059.1	CXCL16
235965_at	28.77	12.11	NM_015395	DKFZP434B0335
206181_at	26.97	37.54	NM_003037.1	SLAMF1
202934_at	26.52	308.10	NM_000189.4	HK2
204798_at	25.75	76.39	NM_005375.2	MYB
212292_at	25.37	11.93	NM_003045.3	SLC7A1
202609_at	25.34	23.46	NM_004447.4	EPSS
202653_s_at	25.33	17.63	NM_000201.1	ICAM1
227262_at	24.50	28.82	NM_178232.2	HAPLN3
223834_at	23.81	33.84	NM_014143.2	CD274
200951_s_at	22.92	53.94	NM_001759.2	CCND2
202734_at	22.15	15.37	NM_004240.2	TRIP10
202270_at	21.93	11.57	NM_002053.1	GBP1
206991_s_at	21.92	103.31	NM_000579.1	CCR5
218270_at	21.68	76.67	NM_024111.2	CHAC1
223861_s_at	21.49	22.20	NM_145071.1	CISH
203821_at	21.49	36.67	NM_001945.1	HBEGF
213256_at	20.26	14.23	NM_178450.2	MAR3
209765_at	20.10	28.50	NM_033274.2	ADAM19
204440_at	19.69	17.28	NM_00140280.1	CD83
202288_s_at	19.47	16.82	NM_078467.1	CDKN1A
214095_at	17.37	15.85	NM_005412.4	SHMT2
204702_s_at	17.29	28.07	NM_004289.5	NFE2L3
201560_at	17.11	37.76	NM_013943.1	CLIC4
208916_at	17.07	19.14	NM_005628.1	SLC1A5
1555167_s_at	17.07	22.37	NM_005746.1	PBEF1
209636_at	16.62	16.11	NM_002502.2	NFKB2
242943_at	16.42	20.24	NM_005668.3	ST3S1A4
205393_s_at	16.23	19.54	NM_001274.2	CHUK1
219632_s_at	15.80	12.81	NM_018727.4	TRPV1
201489_at	15.79	20.03	NM_005729.3	PP1F
203967_at	15.30	45.70	NM_001254.3	CDC6
242504_at	15.21	19.43	NM_024492	APOARGC
210841_x_at	15.07	25.37	NM_003790.2	TNFRSF25
204466_s_at	15.03	16.34	NM_007308.1	SNCA
243000_at	14.92	11.82	NM_001259.5	CDK6
217738_at	14.56	15.29	NM_005746	PBEF
207229_at	13.60	14.35	NM_006611.1	KLRA1
203971_at	13.53	23.32	NM_001859.2	SLC31A1
200628_s_at	13.50	17.73	NM_004184.3	WARS
205965_at	13.13	25.02	NM_006399.2	BATF
223851_s_at	12.99	30.16	NM_004195.2	TNFRSF18
201014_s_at	12.98	20.04	NM_006452.2	PAICS
207651_at	12.97	9.86	NM_013308.2	GPR171
223225_s_at	12.93	12.70	NM_031216.3	SEH1L
212859_x_at	12.83	13.60	NM_175617.3	MT1E
217599_s_at	12.65	12.46	NM_199072.2	MDIFC
210001_s_at	12.63	13.67	NM_003745.1	SOC31
210190_at	12.62	20.83	NM_003764.2	STX11
223229_at	12.22	16.57	NM_014176.1	UBE2T
208457_at	11.83	12.86	NM_004419.3	DUSP5
205599_at	11.81	12.46	NM_005658.3	TRAF1
51146_at	11.75	7.20	NM_017837.2	PIGV
218826_at	11.72	5.32	NM_017515.3	SLC35F2
205881_at	11.63	18.34	NM_004049.2	BCL2L1
219159_s_at	11.63	10.54	NM_021181.3	SLAMF7
234976_x_at	11.39	16.51	NM_006636	MTFHD2
201195_s_at	11.39	4.96	NM_003486.5	SLC7A5
210458_s_at	11.35	9.73	NM_133484.1	TANK
231779_at	11.25	11.46	NM_001570.3	IRAK2
1568955_at	10.82	5.31	BE57775	FNBP2
210571_s_at	10.71	10.44	XR_000114	CMAH
212365_at	10.64	9.79	NM_012223.2	MYO1B
223217_s_at	10.46	12.69	NM_031419.2	NFKBIZ
235117_at	10.34	9.95	NM_001008708.1	CHAC2
237759_at	10.19	11.91	NM_001778	CD48
213497_at	10.11	7.82	NM_145804.1	ABTB2
202236_s_at	10.04	11.25	NM_003051.2	SLC16A1
219493_at	10.02	7.51	NM_024745.2	SHCBP1
209715_at	9.85	6.44	NM_012117.1	CBX5
215464_s_at	9.79	6.32	NM_014604.2	TAX1BP3
1569003_at	9.78	8.61	BC024020.1	TMEM49
214228_x_at	9.74	6.40	NM_003327.2	TNFRSF4
203612_at	9.70	11.86	NM_004053.3	BYSL

204947\_at 9.69 17.76 NM\_005225.1 E2F1  
 206235\_at 9.68 12.71 NM\_002312.3 LIG4  
 226354\_at 9.05 4.66 NM\_032857.2 LACTB  
 206665\_s\_at 9.63 4.94 NM\_001191.2 BCL2L1  
 1553723\_at 9.61 3.27 NM\_170776.3 GPR97  
 212561\_at 9.45 11.14 NM\_015213.2 RAB6IP1  
 210512\_s\_at 9.37 13.49 NM\_001025366.1 VEGF  
 213113\_s\_at 9.29 12.38 NM\_014096.2 SLC43A3  
 213146\_at 9.16 7.55 XM\_043272.10 JMJD3  
 206039\_at 9.14 10.09 NM\_004794.2 RAB33A  
 224917\_at 9.10 10.47 BC053563.1 MIRN21  
 201577\_at 9.00 13.37 NM\_000269.2 NME1  
 219753\_at 8.94 10.72 NM\_012447.2 STAG3  
 201251\_at 8.93 14.98 NM\_182471.1 PKM2  
 206999\_at 8.93 13.30 NM\_001559.2 IL12RB2  
 209304\_x\_at 8.55 6.59 NM\_015675.2 GADD45B  
 207375\_s\_at 8.54 8.37 NM\_002189.2 IL15RA  
 223775\_at 8.53 41.50 NM\_178662.2 TSPAN33  
 223620\_at 8.51 10.67 NM\_001033514.1 GPR34  
 201160\_s\_at 8.50 21.34 NM\_003651.3 CSDA  
 218145\_at 8.49 6.03 NM\_021158.3 TRIB3  
 209239\_at 8.46 8.40 NM\_003998.2 NFKB1  
 204057\_at 8.42 8.99 NM\_002163.2 IRF8  
 203354\_x\_at 8.37 10.46 NM\_004219.2 PTTG1  
 204269\_at 8.37 12.96 NM\_006875.2 PIM2  
 212641\_at 8.37 5.55 NM\_006734 HIVEP2  
 230233\_at 8.28 3.66 NM\_152545 GPIG4  
 213056\_at 8.19 15.90 XM\_114303.3 FRMD4B  
 200759\_x\_at 8.17 12.19 NM\_003204.1 NFE2L1  
 223984\_s\_at 8.09 8.53 NM\_001008564.1 NUPL1  
 209319\_x\_at 8.06 4.94 NM\_002656.2 FLAQL1  
 202071\_at 8.05 8.81 NM\_002999.2 SDC4  
 202307\_s\_at 7.88 6.08 NM\_000593.5 TAP1  
 229236\_s\_at 7.84 4.60 NM\_178867.3 SFXN4  
 1555638\_a\_at 7.75 20.39 NM\_022136.3 SAMSN1  
 205443\_at 7.73 5.82 NM\_003082.2 SNAPC1  
 204068\_at 7.69 15.43 NM\_006281 STK3  
 205013\_s\_at 7.68 10.65 NM\_000675.3 ADORA2A  
 222532\_at 7.67 8.07 NM\_021203.2 SRPRB  
 228868\_x\_at 7.61 17.38 NM\_030928 CDT1  
 204027\_s\_at 7.59 7.15 NM\_005371.3 METTL1  
 209610\_s\_at 7.59 3.09 NM\_003038.2 SLC14A  
 223499\_s\_at 7.49 6.64 NM\_016042.2 EXOSC3  
 206461\_x\_at 7.42 4.69 NM\_005951.1 MTH1  
 225655\_at 7.41 17.20 NM\_013282.2 UHRF1  
 201111\_at 7.37 8.23 NM\_001316.2 CSE1L  
 1556820\_a\_at 7.37 5.59 NM\_006021 DLEU2  
 227027\_at 7.37 5.86 NM\_002056 GFPT1  
 218854\_at 7.32 18.23 NM\_013352.1 SART2  
 212009\_s\_at 7.30 9.08 NM\_006819 STIP1  
 202464\_s\_at 7.14 4.36 NM\_004566.2 PFKFB3  
 211333\_s\_at 7.13 8.82 NM\_000639.1 FASLG  
 214155\_s\_at 7.07 4.79 NM\_052879.3 LARP4  
 206365\_at 7.03 6.27 NM\_002995.1 XCL1  
 219433\_at 7.02 8.17 NM\_017745.4 BCOR  
 218254\_s\_at 7.00 5.98 NM\_001033503.1 SAR1B  
 202375\_at 6.92 6.51 NM\_014822.1 SEC24D  
 200799\_at 6.87 6.51 NM\_005345.4 HSPA1A  
 224615\_x\_at 6.82 5.12 NM\_030789.2 HM13  
 204745\_x\_at 6.82 4.97 NM\_005950.1 MT1G  
 201263\_at 6.82 8.06 NM\_152295.3 TARS  
 223103\_at 6.80 3.41 NM\_006645.1 STARD10  
 228448\_at 6.79 4.66 NM\_198552.1 FAM89A  
 224285\_at 6.74 7.61 NM\_032553.1 GPR174  
 228167\_at 6.71 6.25 NM\_130446 KLHL6  
 203293\_s\_at 6.62 7.14 NM\_005570.2 LMAN1  
 218189\_s\_at 6.58 6.70 NM\_018946.2 NANS  
 222500\_at 6.52 7.15 NM\_016059.3 PPIL1  
 202345\_s\_at 6.51 9.34 NM\_001444.1 FABP5  
 207237\_at 6.46 5.67 NM\_002232.3 KCNA3  
 207339\_s\_at 6.46 4.67 NM\_006588.1 LTB  
 202043\_s\_at 6.43 7.35 NM\_004595.2 SMS  
 213198\_at 6.41 6.05 NM\_004302.3 ACVR1B  
 210279\_at 6.39 6.34 NM\_005292.2 GPR18  
 209193\_at 6.37 8.94 NM\_002648.2 PIM1  
 204716\_at 6.36 6.55 NM\_005436.2 CDC6  
 1564520\_s\_at 6.35 7.64 NM\_001039619.1 SKE1  
 218585\_s\_at 6.34 15.50 NM\_016448.1 DTL  
 240338\_at 6.29 3.78 NM\_022350 LRAP  
 203139\_at 6.29 4.19 NM\_004938.2 DAPK1  
 224827\_at 6.27 3.75 NM\_152277 DC-UbP  
 203562\_at 6.26 3.43 NM\_005103.3 FEZ1  
 216392\_x\_at 6.24 5.18 NM\_022754.4 SPKN1  
 201619\_at 6.19 9.31 NM\_014098.2 PRDX3  
 213427\_at 6.15 14.27 NM\_006638.2 RPP40  
 205205\_at 6.14 3.64 NM\_006509.2 RELB  
 202710\_at 6.08 5.51 NM\_005868.4 BET1  
 203010\_at 6.06 5.74 NM\_003152.2 STAT5A  
 217834\_s\_at 6.02 7.91 AB209098.1 SYNCRIP  
 210538\_s\_at 6.02 4.04 NM\_182962.1 BIRC3  
 222981\_s\_at 5.97 8.22 NM\_016131.2 RAB10  
 210117\_at 5.91 3.42 NM\_003114.3 SPAG1  
 225439\_at 5.90 7.75 NM\_032869.2 NUDCD1  
 1558102\_at 5.86 4.88 NM\_023003 TM6SF1  
 209218\_at 5.83 8.21 NM\_003129.3 SQLE  
 208361\_s\_at 5.80 8.83 NM\_001722.2 POLR3D  
 214062\_x\_at 5.77 3.68 NM\_001001716.1 NFKBIB  
 1554572\_a\_at 5.77 6.04 NM\_024670.3 SUV39H2  
 208581\_x\_at 5.75 4.05 NM\_005952.2 MT1X  
 218739\_at 5.71 3.98 NM\_016006.3 ABHD5  
 204523\_at 5.70 3.73 NM\_003440.2 ZNF140  
 1555628\_a\_at 5.64 5.93 NM\_032782.3 HAVCR2  
 228092\_at 5.62 5.01 NM\_001881.2 CREM  
 215501\_s\_at 5.56 3.69 NM\_007207.3 DUSP10  
 208967\_s\_at 5.51 6.87 NM\_001625.2 AK2  
 214211\_at 5.51 4.11 NM\_002032.2 FTH1  
 1557905\_s\_at 5.51 3.59 NM\_000610.3 CD44  
 203344\_s\_at 5.50 6.08 NM\_002894.2 RBBP8  
 217299\_s\_at 5.49 3.39 NM\_001024688.1 NBN  
 212141\_at 5.46 5.41 NM\_005914.2 MCM4  
 216201\_s\_at 5.45 13.64 NM\_020648.3 TWSG1  
 212110\_at 5.44 7.11 NM\_015359.1 SLC39A14  
 202014\_at 5.37 5.37 NM\_014330.2 PPP1R15A  
 214706\_at 5.37 3.25 NM\_198087.1 ZNF200  
 218404\_at 5.37 5.68 NM\_013322.2 SNX10  
 201548\_s\_at 5.35 4.99 NM\_006618.3 JARID1B  
 203033\_x\_at 5.35 7.29 NM\_001432.2 FH1  
 201714\_at 5.31 6.11 NM\_001070.3 TUBG1  
 227697\_at 5.31 4.50 NM\_003955.3 SOCS3  
 219257\_s\_at 5.30 8.41 NM\_182965.1 SPHK1  
 216952\_s\_at 5.28 4.89 NM\_032737.2 LMNB2  
 219920\_s\_at 5.27 12.65 NM\_021971.1 GMPPB  
 226150\_at 5.23 5.01 NM\_032483 HTPAP  
 208813\_at 5.23 6.28 NM\_002079.1 GOTT1  
 222262\_s\_at 5.21 5.13 NM\_018638.4 ETKK1  
 207275\_s\_at 5.18 5.14 NM\_001995.2 ACSL1

201144_s_at	5.18	5.17 NM_004094.4	EIF2S1
208748_s_at	5.17	8.78 NM_005803.2	FLOT1
209366_x_at	5.09	4.80 NM_001914.2	CYB5
202205_at	5.08	7.37 NM_003370.3	VASBP
202069_s_at	5.07	5.40 NM_005530.2	IDH3A
202748_at	5.06	3.22 NM_004120.3	GBP2
209272_at	5.05	5.00 NM_005966.3	NAB1
203957_at	5.04	6.51 NM_198258.1	E2F6
228490_at	5.04	4.99 NM_007011.5	ABHD2
207765_s_at	5.03	3.89 AK056944.1	RBPSLH
227737_at	5.02	6.88 NM_021203	APMGF1
206034_at	5.00	5.52 NM_198833.1	SERPINB8
224953_at	4.99	3.96 NM_030799.6	YIPF5
205691_at	4.98	3.58 NM_004209.4	SYNGR3
201930_at	4.98	5.27 NM_005915.4	MCM6
221649_s_at	4.96	6.81 NM_020230.4	PPAN
216252_x_at	4.96	15.10 NM_152874.1	FAS
202906_at	4.95	3.12 NM_006005.2	WFS1
214039_s_at	4.95	3.36 NM_018407.4	LAPTM4B
209572_s_at	4.95	4.74 NM_152991.1	EED
242338_at	4.93	4.98 NM_001008495.1	TMEM64
204858_s_at	4.92	7.98 NM_001953.2	ECGF1
218472_x_at	4.90	4.68 NM_015946.4	PELO
227120_at	4.89	3.50 NM_001012427.1	FOXO4
213012_at	4.88	3.39 NM_006154.1	NEDD4
202138_x_at	4.86	4.07 NM_006303	JTV1
207431_s_at	4.86	3.74 NM_003676.2	DEGS1
204012_s_at	4.86	3.89 NM_014793.3	LCMT2
222734_at	4.81	5.67 NM_015836.2	WARS2
209026_x_at	4.81	6.95 NM_178014.2	TUBB
203596_s_at	4.80	3.45 NM_007137.3	WBP4
212378_at	4.78	9.29 NM_000819.3	GART
202557_at	4.77	3.87 NM_006948.4	STCH
227423_at	4.75	3.17 NM_144598.2	LRRC28
226372_at	4.71	3.45 NM_018413	CHST11
229595_at	4.66	4.72 NM_144636.1	CHCHD4
36564_at	4.66	6.31 NM_153341.1	IBRD3C
203943_at	4.64	5.44 NM_004798.2	KIF3B
201118_at	4.64	7.90 NM_002631.2	PGD
214435_x_at	4.64	4.83 NM_005402.2	RALA
241937_s_at	4.63	6.37 NM_033661.3	WDR4
215165_x_at	4.62	3.72 NM_000373.1	UMPS
202246_s_at	4.62	9.03 NM_000075.2	CDK4
213133_s_at	4.61	3.55 NM_004483.3	GC3H
237215_s_at	4.58	7.93 NM_003234.1	TFRC
1553510_s_at	4.57	4.46 NM_005444.1	RQCD1
212978_at	4.56	3.15 NM_015350	TA-LRRP
203233_at	4.53	5.04 NM_000418.2	IL4R
228234_at	4.53	4.38 NM_021649.3	TICAM2
226997_s_at	4.51	3.10 NM_014153.2	ZC3H7A
64883_at	4.49	8.73 NM_152561	MOSPD2
201169_s_at	4.48	3.68 NM_003670.1	BHLHB2
208726_s_at	4.47	5.01 NM_003908.3	EIF2S2
200806_s_at	4.42	5.64 NM_002156.4	HSPD1
204121_at	4.42	7.11 NM_006705.2	GADD45G
222642_s_at	4.42	3.48 NM_018126.1	TMEM33
205419_at	4.42	26.53 NM_004951.3	EBI2
218264_at	4.40	5.86 NM_016567.2	BCCIP
218408_at	4.40	6.29 NM_012456.2	TIMM10
204459_at	4.38	5.34 NM_001325.2	CSTF2
225291_at	4.36	6.30 NM_033109.2	PNPT1
209567_at	4.36	4.67 NM_015169.3	RRS1
213671_s_at	4.35	4.07 NM_004990.2	MARS
203857_s_at	4.34	6.88 NM_006810.1	PDIA5
216212_s_at	4.34	4.23 NM_001363.2	DKC1
208864_s_at	4.33	4.38 NM_003329.2	TXN
212458_at	4.33	5.39 NM_181784.1	SPRED2
221485_at	4.32	3.97 NM_004776.2	B4GALT5
201096_s_at	4.31	5.07 NM_001660.2	ARF4
214649_s_at	4.30	3.38 NM_201278.1	MTMR2
201397_at	4.28	11.69 NM_006623.2	PHGDH
222867_s_at	4.27	3.79 NM_016060.1	MED31
223299_at	4.25	4.19 NM_033280.1	SEC11L3
205909_at	4.25	4.59 NM_002692.2	POLE2
226996_at	4.25	4.60 NM_001002257.1	LYCAT
212685_s_at	4.25	3.93 NM_012453.2	TBL2
217165_x_at	4.22	4.50 NM_005949.1	MTIF
204125_at	4.22	5.72 NM_016013.2	NDUFAF1
208799_at	4.21	5.69 NM_002797.2	PSMB5
224654_at	4.21	4.58 NM_004728	DDX21
201362_at	4.18	5.03 NM_006469.4	IVNS1ABP
225866_at	4.17	5.65 NM_032194.1	BXDC1
203102_s_at	4.17	3.78 NM_002408.3	MGAT2
224685_at	4.16	4.18 NM_001040001.1	MLLT4
1554696_s_at	4.15	9.03 NM_001071.1	TYMS
202671_s_at	4.14	3.51 NM_003681.3	PDXK
222385_x_at	4.14	3.64 NM_013336.3	SEC61A1
202107_s_at	4.14	5.30 NM_004526.2	MCM2
209662_at	4.13	5.11 NM_004365.2	CETN3
204744_s_at	4.13	5.91 NM_002161.3	IARS
212340_at	4.13	4.74 AK026979.1	YIPF6
231832_at	4.12	3.74 NM_003774.3	GALNT4
231291_at	4.12	4.49 NM_000164	GIPR
216602_s_at	4.12	4.78 NM_004461.1	FARSLA
223240_at	4.10	3.63 NM_012180.2	FBXO8
204767_s_at	4.09	3.83 NM_004111.4	FEN1
214483_s_at	4.06	3.19 NM_001025593.1	ARFIP1
1554351_at	4.06	4.01 NM_152902.3	TIPRL
205153_s_at	4.06	5.38 NM_001250.4	CD40
236345_at	4.05	3.67 NM_001061	TBXAS1
232160_s_at	4.04	4.78 NM_024309.2	TNIP2
208598_s_at	4.04	5.33 NM_031407.3	HUWE1
202446_s_at	4.04	3.25 NM_021105.1	PLSCR1
201000_at	4.04	6.00 NM_001605	AARS
207812_s_at	4.03	3.88 NM_015530.3	GORASP2
218512_at	4.01	8.30 NM_018256.2	WDR12
201328_at	4.01	3.36 NM_005239.4	ETS2
235463_s_at	3.99	4.50 NM_203463.1	LASS6
201739_at	3.98	10.84 NM_005627.2	SGK
215629_s_at	3.97	4.76 AF254117.1	BCMSUNL
228481_at	3.97	4.22 BC022792.1	HUMAGCGB
203145_at	3.97	5.96 NM_006461.3	SPAG5
202837_at	3.96	5.63 NM_006700.1	TRAFD1
219390_at	3.95	3.81 NM_017946.2	FKBP14
209971_x_at	3.94	3.47 BC002853.1	HRI
207315_at	3.93	6.78 NM_006566.1	CD226
202451_at	3.92	4.76 NM_005316.2	GTF2H1
218889_at	3.92	3.27 NM_022451.9	NOC3L
219869_s_at	3.91	4.78 NM_022154.5	SLC39A8
218890_x_at	3.90	5.52 NM_016622.2	MRPL35
201098_at	3.90	4.74 NM_004766.1	COPB2
218615_s_at	3.89	3.64 NM_018266.1	TMEM39A
222979_s_at	3.87	4.90 NM_033161.2	SURF4
203201_at	3.86	4.84 NM_003033.1	PNM2
218886_at	3.86	4.01 NM_017908.2	PAK1IP1
200924_s_at	3.86	3.70 NM_001012661.1	SLC3A2

203158\_s\_at 3.84 4.15 NM\_014905.2 GLS  
211953\_s\_at 3.83 3.11 NM\_002271.4 RANBP5  
204970\_s\_at 3.82 4.73 NM\_032711.2 MAFK  
201063\_at 3.82 4.15 NM\_002901.1 RCN1  
217848\_s\_at 3.81 4.06 NM\_021129.3 PPA1  
240983\_s\_at 3.81 3.80 NM\_139273.2 CARS  
235175\_at 3.79 3.72 NM\_052941 GBP4  
201252\_at 3.79 5.16 NM\_006503.2 PSMC4  
208693\_s\_at 3.79 5.18 NM\_020247.1 GARS  
222753\_s\_at 3.79 4.15 NM\_021928.1 SPCS3  
239544\_at 3.78 4.17 NM\_015559 SETBP1  
223596\_at 3.78 4.15 NM\_005135 SLC12A6  
202223\_at 3.76 5.05 NM\_152713.2 ITM1  
218670\_at 3.75 5.93 NM\_001002019.1 PUS1  
201298\_s\_at 3.73 4.09 NM\_018221.1 MOBK1B  
226651\_at 3.73 3.16 NM\_004272 HOMER1  
221253\_s\_at 3.72 6.96 NM\_030610.2 TXNDC5  
201657\_at 3.72 3.25 NM\_001177.3 ARL1  
208822\_s\_at 3.72 8.16 NM\_003383.3 VLDLR  
208296\_x\_at 3.72 4.59 NM\_014350.1 TNFAIP8  
226537\_at 3.72 3.64 NM\_138571.3 HINT3  
202195\_s\_at 3.71 3.57 NM\_016040.3 TMED5  
209276\_s\_at 3.70 6.53 NM\_002064.1 GLRX  
201583\_s\_at 3.69 5.39 NM\_006363.4 SEC22B  
218488\_at 3.69 5.22 NM\_020365.2 EIF2B3  
203956\_at 3.69 3.74 NM\_014941.1 MORC2  
226181\_at 3.68 4.17 NM\_016262.3 TUBE1  
212296\_at 3.67 6.10 NM\_005805 PSM14  
218027\_at 3.66 4.91 NM\_014175.2 MRPL15  
224634\_at 3.66 4.03 NM\_015590.2 GPAT1C4  
208965\_s\_at 3.66 4.32 NM\_003758.2 EIF351  
203746\_s\_at 3.66 4.76 NM\_005333.2 HCCS  
200755\_s\_at 3.66 3.98 NM\_001219.2 CALU  
203358\_s\_at 3.65 3.65 NM\_004456.3 EZH2  
228964\_at 3.64 3.34 NM\_001198.2 PRDM1  
202483\_s\_at 3.63 6.30 NM\_002882.2 RANBP1  
219631\_at 3.63 5.32 NM\_013437.2 LRPI2  
204133\_at 3.63 5.80 NM\_004704.3 RNU3IP2  
205644\_s\_at 3.62 3.06 NM\_003096.2 SNRPG  
210983\_s\_at 3.62 5.53 NM\_005916.3 MCM7  
203120\_at 3.62 3.56 NM\_001031685.1 TP53BP2  
213454\_at 3.61 5.30 NM\_199294.1 APITD1  
222411\_s\_at 3.61 3.57 NM\_007107.2 SRS3  
225831\_at 3.59 3.17 NM\_033631.2 LUZF1  
205796\_at 3.59 4.70 NM\_018393.2 TCP11L1  
212185\_x\_at 3.58 3.80 NM\_005953.2 MT2A  
226760\_at 3.58 3.49 AKO56736.1 MBTPS2  
218866\_s\_at 3.56 5.40 NM\_016310.2 POLR3K  
238581\_at 3.55 3.88 NM\_052942 GBP5  
203080\_s\_at 3.55 4.22 NM\_005694.1 COX17  
202619\_at 3.53 4.53 NM\_001905.1 CTFS  
205192\_at 3.53 5.39 NM\_003954.1 MAP3K14  
223222\_at 3.52 8.04 NM\_021734.3 SLC25A19  
212528\_at 3.52 4.83 AI348009 D15Wsu75e  
209501\_at 3.50 3.30 NM\_001802.1 CDR2  
201079\_at 3.50 4.27 NM\_004710.3 SYNGR2  
218982\_s\_at 3.50 3.89 NM\_015989.2 MRPS17  
226384\_at 3.50 4.23 BC033025.1 PPAPDC1B  
213144\_at 3.49 3.93 NM\_004287.3 GOSR2  
222684\_s\_at 3.48 4.74 NM\_024894.1 NOL10  
203388\_at 3.48 5.89 NM\_004313.3 ARRB2  
216392\_s\_at 3.48 4.95 NM\_007190.2 SEC23IP  
203471\_s\_at 3.48 6.47 NM\_002664.1 PLEK  
201025\_at 3.47 3.18 NM\_015904.3 EIF5B  
202401\_s\_at 3.47 3.88 NM\_003131.2 SRF  
219275\_at 3.46 5.31 NM\_004708.2 PDCD5  
202276\_at 3.46 3.69 NM\_006304.1 SHFM1  
218239\_s\_at 3.46 3.10 NM\_012341.2 GTPBP4  
200981\_s\_at 3.45 3.34 NM\_001539.2 DNAJA1  
201326\_at 3.44 5.21 NM\_001009186.1 CCT6A  
201946\_s\_at 3.43 3.59 NM\_006431.2 CCT2  
201512\_s\_at 3.43 4.02 NM\_014820.3 TOMM70A  
203225\_s\_at 3.43 3.05 NM\_018339.3 RFK  
205282\_at 3.42 4.19 NM\_017522.3 LRP8  
213191\_at 3.42 3.77 NM\_182919.1 TICAM1  
208680\_at 3.42 5.17 NM\_002574.2 PRDX1  
223335\_s\_at 3.42 3.16 NM\_016486.2 TMEM169  
224426\_s\_at 3.42 8.92 NM\_031942.4 CDC47  
204507\_s\_at 3.41 3.47 NM\_000945.3 PPP3R1  
217809\_at 3.41 6.01 NM\_014038.1 BZW2  
219716\_at 3.41 3.47 NM\_030641.3 APOL6  
217995\_at 3.40 4.92 NM\_021199.2 SQRDL  
226241\_s\_at 3.40 4.34 NM\_181304.1 MRPL52  
226163\_at 3.40 3.76 NM\_152735.3 ZBTB9  
229074\_at 3.40 3.75 NM\_139265 EHD4  
202418\_at 3.39 5.70 NM\_020470.1 YIF1A  
201176\_s\_at 3.38 3.86 NM\_001655.3 ARCN1  
226483\_at 3.37 3.63 NM\_152417.1 TMEM68  
217850\_at 3.37 4.23 NM\_206826.1 GNL3  
211804\_s\_at 3.37 3.60 NM\_001738.2 CDK2  
204441\_s\_at 3.36 6.45 NM\_002689.2 POLA2  
223100\_s\_at 3.36 4.94 NM\_014142.2 NUDT5  
204026\_s\_at 3.35 6.92 NM\_001005413.1 ZWINT  
207121\_s\_at 3.35 3.57 NM\_002748.2 MAPK6  
218590\_at 3.34 4.43 NM\_021830.3 PEO1  
201872\_s\_at 3.33 3.92 NM\_002940 ABCE1  
200994\_s\_at 3.33 5.29 NM\_002014.2 FKBP4  
204240\_s\_at 3.32 4.10 NM\_006444 SMC2L1  
219819\_s\_at 3.31 4.62 NM\_014018.2 MRPS28  
236228\_at 3.30 7.24 NM\_054027 ANKH  
202874\_s\_at 3.28 4.20 NM\_001007254.1 ATP6V1C1  
201532\_at 3.27 3.72 NM\_152132.1 PSMA3  
1554020\_at 3.27 3.07 NM\_001714 BICD1  
217919\_s\_at 3.26 3.51 NM\_014050.2 MRPL42  
203575\_s\_at 3.26 4.81 NM\_001896.2 CSNK2A2  
225351\_at 3.26 3.15 NM\_207009.2 FAM45A  
206337\_at 3.26 6.80 NM\_001838.2 CCR7  
201892\_s\_at 3.25 4.68 NM\_000884.2 IMPDH2  
202805\_s\_at 3.25 3.59 NM\_019898.1 ABCC1  
220140\_s\_at 3.25 5.17 NM\_013323.2 SNX11  
224414\_s\_at 3.25 3.76 NM\_032587.3 CARD6  
1554768\_a\_at 3.24 4.94 NM\_002358.2 MAD2L1  
200054\_at 3.24 3.32 NM\_003904.3 ZNF259  
218461\_at 3.24 5.21 NM\_016301.2 ATPBD1C  
225712\_at 3.23 5.07 NM\_015465 GEMIN5  
201274\_at 3.22 5.26 NM\_002790.2 PSMA5  
212210\_s\_at 3.22 4.59 NM\_004104.4 FASN  
208787\_at 3.21 3.96 NM\_007208.2 MRPL3  
228019\_s\_at 3.20 4.91 NM\_016067.1 MRPS18C  
200989\_at 3.20 3.58 NM\_001530.2 HIF1A  
216942\_s\_at 3.19 3.53 NM\_001779.1 CD58  
204203\_at 3.19 3.01 NM\_001806.2 CEBPG  
226750\_at 3.18 3.46 NM\_032239.2 LARP2  
240943\_at 3.18 3.17 NM\_002828 PTPN2  
208649\_s\_at 3.18 3.75 NM\_007126.2 VCP  
222502\_s\_at 3.17 4.41 NM\_016617.1 UFM1

221923_s_at	3.17	4.24 NM_001037738.1	NPM1
223756_s_at	3.17	3.84 NM_001515.2	GTF2H2
202295_s_at	3.16	4.90 NM_004390.2	CTSH
201199_s_at	3.16	6.06 NM_002807.2	PSMD1
200660_at	3.15	3.77 NM_005620.1	S100A11
239363_at	3.15	3.23 NM_021218	HSPC043
209434_s_at	3.15	3.73 NM_002703.3	PPAT
46167_at	3.15	3.65 NM_004623.2	TTC4
201945_at	3.14	4.43 NM_002569.2	FURIN
210573_s_at	3.13	3.45 NM_006468.5	POLR3C
214359_s_at	3.13	4.19 NM_007355.2	HSPC8
208507_at	3.12	4.22 NM_002947.3	RPA3
202309_at	3.12	4.67 NM_005956.2	MTHFD1
235113_at	3.12	3.80 NM_152329.3	PPIL5
208975_s_at	3.12	3.16 NM_002265.4	KPNB1
231776_at	3.11	4.15 NM_005442.2	EOMES
221804_s_at	3.11	3.62 NM_018472.1	FAM45B
232432_s_at	3.11	3.76 NM_022502.2	SLC30A5
212636_at	3.10	3.33 NM_206853.1	OKI
205677_s_at	3.10	9.06 NM_005887	DLEU1
207622_s_at	3.10	5.48 NM_007189.1	ABCF2
218049_s_at	3.09	3.78 NM_014078.4	MRPL13
210946_at	3.09	3.01 NM_176895.1	PPAP2A
218235_s_at	3.07	3.48 NM_016037.2	UTP1HL
203213_at	3.06	7.86 NM_001786	CDC2
218810_at	3.06	4.73 NM_025079.1	ZC3H12A
219690_at	3.05	3.66 NM_024660.1	UZAF1L4
212116_at	3.05	4.00 NM_006510.3	RFP
208863_s_at	3.05	4.42 NM_006924.3	SFRS1
210996_s_at	3.05	3.79 NM_006761.3	YWHAE
203371_s_at	3.05	4.20 NM_002491.1	NDUFB3
203537_at	3.04	3.81 NM_002767.2	PRPSA2
224334_s_at	3.04	3.53 NM_016497.2	MRPL51
213951_s_at	3.04	3.61 NM_013290.3	PSMC3IP
201277_s_at	3.03	4.57 NM_004499.3	HNRPAB
200825_s_at	3.02	4.15 NM_006389.2	HYOU1
217499_x_at	3.02	3.91 NR_002163.2	ORTE37P
225766_s_at	3.01	5.02 NM_002270	KPNB2
227335_s_at	3.01	3.07 NM_033081.1	DIDO1
207629_s_at	3.00	3.42 NM_004723.2	ARHGFE2
218193_s_at	3.00	3.29 NM_016072.2	GOLT1B



3-fold or more down-regulated

	Fold Change Donor 1	Fold Change Donor 2	GenBank ID	Gene Symbol
201044_x_at	-360.56	-141.86	NM_004117.2	DUSP1
206522_at	-342.94	-221.08	NM_004668.1	MGAM
217414_x_at	-323.54	-402.43	NM_000558.3	HBA1
206481_s_at	-281.69	-88.75	NM_001290.2	LDB2
219452_at	-107.77	-136.24	NM_022355.1	DPEP2
242020_s_at	-99.83	-683.69	NM_030776.1	ZBP1
219638_s_at	-98.67	-92.06	NM_012445.1	SPON2
233743_x_at	-96.41	-241.17	NM_030760.3	EDG8
209458_x_at	-96.28	-116.24	NM_000517.3	HBA2
212235_at	-94.11	-108.28	NM_015103.1	PLXND1
214183_s_at	-93.06	-37.63	NM_012253.2	TKTL1
1569225_a_at	-66.27	-58.13	BC021562	SCML4
221602_s_at	-65.71	-56.81	NM_005449.3	FAIM3
214369_s_at	-63.82	-45.89	NM_153819.1	RASGRP2
225803_at	-62.17	-60.51	NM_058229.2	FBXO32
209201_x_at	-53.71	-44.47	NM_003467.2	CXCR4
201341_at	-53.66	-70.76	NM_003653.1	ENC1
205239_at	-52.17	-156.69	NM_001657.2	AREG
215189_at	-51.80	-124.17	XM_939516.1	KRTHB6
207001_x_at	-45.43	-85.81	NM_001015881.1	TSC22D3
213854_at	-44.74	-11.25	NM_145731.2	SYNGR1
229952_at	-42.39	-31.69	NM_000347	SPTB
204293_at	-39.09	-7.74	NM_000189.2	SOSH
228284_at	-39.03	-108.92	NM_005077	TLE1
228113_at	-38.36	-88.51	NM_175738.3	RAB37
204661_at	-36.31	-89.75	NM_001803.2	CD52
232686_at	-34.42	-46.82	AF161341.1	SIGLECP3
203036_s_at	-33.97	-15.27	NM_014751.2	MTSS1
203626_at	-32.57	-122.50	NM_003970.1	MYO10Z
201531_at	-29.29	-35.35	NM_003407.1	ZFP36
219396_s_at	-28.96	-22.24	NM_024608.1	NEIL1
244677_at	-28.53	-67.18	NM_002616	PER1
243622_at	-28.42	-21.07	NM_006671.3	SLC1A7
227803_at	-27.91	-280.60	NM_021572.4	ENPP5
204066_s_at	-27.51	-11.82	NM_001037131.1	CENTG2
220384_at	-27.47	-46.06	NM_016616.2	TXNDC3
223543_at	-27.32	-17.83	NM_032512.2	PDZK4
200965_s_at	-26.77	-28.97	NM_001003407.1	ABLIM1
205997_s_at	-24.88	-161.08	NM_014265	ADAM28
202264_at	-24.46	-15.27	NM_005924.6	MXI1
1560228_at	-23.53	-360.83	NM_178310.1	SNAI3
230707_at	-23.31	-38.20	NM_003105	SORL1
215933_s_at	-23.19	-50.88	NM_002729.3	HHEX
207606_s_at	-23.16	-30.84	NM_018287.4	ARHGAP12
226279_at	-23.09	-64.73	NM_007173.3	FRS3S23
229480_at	-21.56	-50.80	NM_020698.1	TMC3
204867_at	-20.72	-24.28	NM_005258.2	GCHFR
208078_s_at	-20.64	-17.10	NM_173354.2	SNF1LK
201367_s_at	-20.48	-109.68	NM_006887.3	ZFP36L2
204621_s_at	-20.26	-60.73	NM_006186.2	NRA42
213385_at	-19.59	-13.60	NM_015166.3	MUC1
219529_at	-19.54	-14.02	NM_004669.2	CLIC3
207840_at	-19.43	-33.06	NM_007053.2	CD160
212430_at	-19.20	-28.89	NM_017495.4	RNPC1
219371_s_at	-18.53	-34.45	NM_016270.2	KLF2
203011_s_at	-18.33	-20.28	NM_014021.2	SSX2IP
209187_s_at	-18.30	-20.79	NM_003749.2	IRS2
215333_x_at	-17.86	-6.10	NM_000561.2	GSTM1
233467_s_at	-17.76	-57.02	NM_005705.4	TPSAB32
238429_at	-17.59	-30.62	NM_144649.1	TMEM71
219889_at	-17.19	-17.09	NM_005479.2	FRAT1
229441_at	-16.71	-114.77	NM_012193	FZD4
225562_at	-16.69	-33.26	NM_007368.2	RASA3
226549_at	-16.51	-22.10	NM_001024401.2	SBK1
206582_s_at	-16.76	-16.39	NM_021524.1	GPR56
207118_s_at	-16.70	-24.81	NM_006983.1	MMP23B
207008_at	-16.68	-34.12	NM_001567.2	IL6RB
202524_s_at	-16.35	-27.47	NM_014767.1	SPOCK2
218921_at	-16.26	-23.58	NM_021805.1	SIGIRR
209447_at	-14.99	-15.34	NM_015293.1	SYNE1
224215_s_at	-14.75	-27.25	NM_005618.2	DLL1
227020_at	-14.60	-11.53	NM_001005404.3	YPFEL2
209886_s_at	-14.40	-18.25	NM_003096.3	SELPLG
202973_x_at	-14.28	-30.93	NM_001015045.1	FAM13A1
210240_s_at	-14.18	-8.80	NM_001800.3	CDKN2D
217159_x_at	-14.05	-10.11	NM_016543.1	SIGLEC7
212823_s_at	-13.71	-9.89	NM_015549.1	PLEKHG3
228788_at	-13.58	-27.71	NM_013313.3	YPFEL1
202191_s_at	-13.41	-39.24	NM_201432.1	GAS7
235723_at	-13.35	-10.08	NM_017637.5	BNC2
211663_x_at	-13.34	-15.36	NM_000954	PTGDS
1557166_at	-13.16	-34.80	NM_014456	PDCC4
228097_at	-13.13	-16.66	NM_013262	MIR
217078_s_at	-13.04	-19.93	NM_007261.2	CD300A
227353_s_at	-13.03	-14.80	AK090478.1	TMC8
203281_s_at	-12.93	-8.84	NM_003335.2	UBE1L
210202_s_at	-12.92	-13.18	NM_004305.2	BIN1
1553132_a_at	-12.88	-39.06	NM_152332.2	MTAC2D1
204674_at	-12.79	-20.37	NM_006152.2	LRMP
1554827_a_at	-12.69	-12.09	NM_001114.2	ADCY7
202388_at	-12.65	-14.48	NM_002923.1	RGS2
222895_s_at	-12.65	-8.15	NM_022898.1	BCL11B
214623_at	-12.56	-23.87	AK024483.1	SHFM3P1
220016_at	-12.50	-101.91	NM_024060.2	AHNAK
201280_s_at	-12.44	-9.73	NM_001343.1	DAB2
222896_s_at	-12.37	-15.12	NM_016483.6	CXCR5
219505_at	-12.34	-16.64	NM_017424.2	CECR1
213280_at	-12.26	-20.60	NM_015085.3	GARNL4
228708_at	-12.05	-16.99	NM_004163	RAB27B
227726_at	-11.98	-18.67	NM_178841.2	RNF166
205880_at	-11.98	-17.95	NM_001018011.1	ZBTB16
210778_s_at	-11.95	-21.76	NM_006454.2	MXD4
216836_s_at	-11.79	-8.07	NM_001005862.1	ERBB2
214032_at	-11.41	-10.91	NM_001079.3	ZAP70
207460_at	-11.41	-17.03	NM_005317.2	GZMM
1555688_s_at	-11.38	-16.65	NM_002214.2	STIM3
209189_s_at	-11.23	-22.81	NM_005252.2	FOS
218927_s_at	-11.11	-15.90	NM_018641	CHST12
208122_x_at	-10.82	-22.78	NM_014513.1	KIR2DS5
209871_s_at	-10.79	-16.45	NM_005503.2	APBA2
201417_at	-10.72	-14.08	NM_003107.2	SOX4
223130_s_at	-10.69	-6.57	NM_013262.3	NMFLP
212599_at	-10.58	-8.82	NM_015570.1	AUTS2
229031_at	-10.42	-14.39	NM_017623	CNNM3
1568665_at	-10.32	-10.09	BC022477.1	RNF103
210077_s_at	-10.29	-9.49	NM_006925	SFRS5
226146_at	-10.13	-6.79	BC040658.1	BTBD15
222256_at	-10.12	-12.62	NM_198517.2	TBC1D10C
218885_s_at	-10.12	-6.55	NM_024642	GALNT12
228705_at	-9.94	-122.93	NM_144691.3	CAPN12
229164_s_at	-9.90	-5.64	NM_172027.1	ABTB1
222862_s_at	-9.78	-20.63	NM_174858.1	AK5
222257_at	-9.64	-17.01	NM_015894.2	STIM3
57082_at	-9.62	-9.27	NM_015627.1	LDLRAP1
212414_s_at	-9.61	-13.81	NM_015129.4	SEPT6
231124_x_at	-9.48	-12.01	NM_001033667.1	LY9
213279_at	-9.48	-12.73	NM_138452.1	DHRS1

235206_at	-9.47	-6.01 NM_016558	SCAND1
217983_s_at	-9.40	-7.43 NM_003730.3	RNASET2
1557251_at	-9.38	-17.04 XM_370638.4	WHDC1L1
225453_at	-9.34	-6.73 NM_052875.4	VPS29B
1564424_at	-9.32	-35.36 BC035983	FAM62B
1557985_s_at	-9.28	-5.69 XM_085991.8	CEP78
221478_at	-9.26	-12.73 NM_004331.2	BNIP3L
1569136_at	-9.23	-13.00 NM_012214	MGAT4A
203420_at	-9.06	-9.81 NM_016255.1	FAM8A1
233309_at	-9.03	-38.76 NM_013390	TMEM2
226665_at	-8.99	-8.46 NM_152392	AHSA2
228667_at	-8.98	-17.17 NM_001012733.1	AGPAT4
221986_s_at	-8.98	-19.65 NM_017644.3	KLHL24
229896_at	-8.97	-6.38 NM_178129.3	P2RY6
219304_s_at	-8.97	-16.30 NM_033135.3	PDGFD
211389_x_at	-8.93	-18.80 NM_013289.1	KIR3DL1
204794_at	-8.91	-10.40 NM_004418.2	DUSP2
202879_s_at	-8.88	-14.41 NM_004762	PSCD1
204164_at	-8.81	-6.31 NM_006747.2	SIPA1
1552304_s_at	-8.79	-9.37 NM_020845.2	PTPNM2
224482_s_at	-8.77	-9.27 NM_032932.3	RAB11FIP4
204773_at	-8.72	-9.45 NM_004512.3	IL11RA
202723_s_at	-8.71	-9.16 NM_002015.2	FOXO1A
204698_at	-8.69	-27.19 NM_002201.4	ISG20
213733_at	-8.69	-12.81 NM_012335.2	MYO1F
220974_x_at	-8.63	-16.87 NM_036971.3	SFXN3
215111_s_at	-8.63	-12.98 NM_006022.2	TSC22D1
214049_x_at	-8.59	-14.04 NM_006137.6	CD7
229722_at	-8.58	-6.08 NM_014162	HSPC072
221188_s_at	-8.57	-10.42 NM_014430.2	CIDEB
225262_at	-8.51	-14.79 BX647822.1	FOSL2
227732_at	-8.48	-13.52 AB033044.1	ATXN7L1
216552_x_at	-8.47	-18.41 NM_178228.2	KIR2DS4
212259_s_at	-8.42	-13.95 NM_020524.2	PBXIP1
218631_at	-8.41	-13.19 NM_021732.1	AVP1
216676_x_at	-8.41	-22.24 NM_153443.2	KIR3DL3
226261_at	-8.39	-6.59 NM_080875.1	MIB2
241402_at	-8.38	-15.57 AK094466.1	TSEN54
231922_at	-8.32	-5.80 NM_152287.2	ZFP276
211397_x_at	-8.28	-25.08 NM_014218.1	KIR2DL1
204917_s_at	-8.26	-9.88 NM_004529.1	MLLT3
219229_at	-8.24	-8.28 NM_013272.2	SLOC3A1
215894_at	-8.23	-14.69 NM_000963.2	PTGDR
231182_at	-8.14	-7.11 NM_003387	WASPIP
207314_x_at	-8.13	-13.18 NM_006737.1	KIR3DL2
209750_at	-8.12	-17.42 NM_005126.2	NR1D2
1553176_at	-8.12	-14.52 NM_053282.4	SZD1B
200696_s_at	-8.11	-12.83 NM_000177.4	CSN
231484_at	-8.06	-15.18 NM_006095	ATP8A1
1554006_a_at	-8.05	-10.78 NM_001015002.1	LLGL2
241018_at	-7.91	-9.44 AK124967.1	TMEM59
209906_at	-7.84	-19.01 NM_004054.2	C3AR1
212243_at	-7.81	-23.80 NM_001624.1	AIM1
2084432_at	-7.69	-14.92 NM_000513.3	ATM
202369_s_at	-7.69	-3.92 NM_012288.3	TRAM2
1569642_at	-7.60	-10.03 NM_001992	F2R
220987_s_at	-7.54	-8.94 NM_030952.1	NUAK2
219014_at	-7.52	-4.69 NM_016619.1	PLA2G8
212840_at	-7.48	-6.79 NM_003502.2	AXIN1
219382_at	-7.48	-7.64 NM_203344.1	SERTAD3
223464_at	-7.46	-10.75 NM_145638.1	OSBPL5
216979_at	-7.41	-15.11 NM_173199.1	NR4A3
243366_s_at	-7.38	-7.77 NM_000885	ITGA4
208657_s_at	-7.35	-8.58 NM_008640.2	SEPT9
204811_s_at	-7.33	-7.63 NM_001005505.1	CACNA2D2
210361_s_at	-7.31	-6.10 NM_201999.1	ELF2
202326_at	-7.30	-3.18 NM_025256.4	EHMT2
219359_at	-7.28	-7.29 AK090428.1	ATHL1
204995_at	-7.26	-6.77 NM_003885.2	CDK5R1
227946_at	-7.26	-5.21 NM_017731.4	OSBP1L
219132_at	-7.24	-11.43 NM_021255.2	PEL1
226843_s_at	-7.23	-8.88 NM_001040284.1	PAPD5
236782_at	-7.22	-8.89 NM_001017373.1	SAMD3
205005_s_at	-7.11	-9.67 NM_004808	NMT2
208179_x_at	-7.06	-12.04 NM_015868.2	KIR2DL3
225656_at	-7.01	-5.50 NM_018100	EFHC1
219024_at	-6.97	-8.76 NM_001001974.1	PLEKHA1
222453_at	-6.97	-5.87 NM_024843.2	CYBRD1
201601_x_at	-6.94	-10.22 NM_003641.2	IFITM1
223283_s_at	-6.90	-6.01 NM_005786.4	SDCCAG33
208880_at	-6.90	-4.74 NM_015490.3	SEC31L2
225912_at	-6.89	-6.96 NM_033285.2	TP53NP1
212774_at	-6.84	-9.77 NM_006352.3	ZNF238
212071_s_at	-6.81	-5.56 NM_003128	SPTBN1
205315_s_at	-6.79	-12.38 NM_130845.1	SNTB2
202587_s_at	-6.78	-5.83 NM_000476.1	AK1
211290_s_at	-6.75	-5.79 NM_004475.2	FLOT2
219183_s_at	-6.75	-8.54 NM_013385.2	PSCD4
202390_s_at	-6.75	-3.44 NM_002111.6	HD
219566_at	-6.74	-6.78 NM_024310.2	PLEKHF1
229216_at	-6.72	-7.86 NM_005170.2	ASCL2
1568964_x_at	-6.71	-21.05 NM_001030288.1	SPN
228605_at	-6.70	-4.78 NM_001347.2	DGKO
46665_at	-6.59	-7.60 NM_017789.3	SEMA4C
217838_s_at	-6.55	-5.69 NM_016337.2	EVL
202478_at	-6.49	-9.21 NM_021643.1	TRIB2
211410_x_at	-6.48	-10.32 NM_001019081.1	KIR2DL5B
205786_s_at	-6.47	-6.74 NM_000632.3	ITGAM
37117_at	-6.47	-8.97 NM_001017526.1	ARHGAP8
209156_s_at	-6.46	-13.15 NM_001849.2	COL6A2
234574_at	-6.45	-6.10 AK024563	ADAMTS10
201315_x_at	-6.43	-10.13 NM_006435.1	IFITM2
208010_s_at	-6.42	-13.04 NM_012411.2	PTPN22
208981_at	-6.35	-16.33 NM_000442	PECCAM1
216218_s_at	-6.34	-6.18 NM_015184.2	PLCL2
232693_s_at	-6.33	-4.57 NM_018660.2	ZNF395
224882_at	-6.31	-6.00 NM_032501.2	ACSS1
227113_at	-6.28	-10.41 NM_144650.1	ADHFE1
203385_s_at	-6.28	-7.51 NM_000660.3	TGFB1
242644_at	-6.26	-13.89 NM_152468	EVER2
220646_s_at	-6.25	-8.79 NM_016523.1	KLRF1
201012_at	-6.24	-8.59 NM_000700.1	ANXA1
201666_at	-6.24	-6.04 NM_003254.2	TMP1
223176_at	-6.22	-9.05 NM_031477.3	YFEL3
228365_s_at	-6.20	-7.41 NM_032496.1	ARHGAP9
210288_at	-6.19	-8.91 NM_005810.3	KLRG1
1560316_s_at	-6.19	-3.96 N32168	GLCC1
227819_at	-6.18	-6.42 NM_021636.2	LRG6
208198_x_at	-6.16	-11.21 NM_014512.1	KIR2DS1
229445_at	-6.16	-16.25 NM_000101	CYBA
203179_at	-6.13	-7.07 NM_000155.2	GALT
213924_at	-6.13	-13.32 NM_023075	MPPPE1
221221_s_at	-6.12	-13.06 NM_017415.1	KLHL3
203236_s_at	-6.06	-4.82 NM_002398	LGAL9
212144_at	-6.04	-5.59 NM_015374.1	UNC93B
209770_at	-6.01	-6.22 NM_007048.4	BTNA1
208426_x_at	-6.01	-11.81 NM_002255.3	KIR2DL4
203206_at	-5.99	-3.56 NM_014661.3	FAM53B
227199_at	-5.99	-5.12 NM_015151	DIP2
203657_s_at	-5.99	-10.29 NM_003793.3	CTSF
230563_at	-5.98	-8.18 NM_145313.1	RASGEF1A

241619_at	-5.95	-6.61 NM_006888	CALM1
202145_at	-5.95	-4.92 NM_002346.1	LY8E
201855_s_at	-5.94	-4.96 NM_004358.3	CDCC25B
205462_s_at	-5.94	-4.21 NM_002149.2	HPCAL1
204122_at	-5.92	-7.78 NM_198125.1	TYROBP
213856_at	-5.87	-4.53 NM_001777	CD47
219521_at	-5.87	-3.69 NM_054025.2	B3GAT1
225763_at	-5.85	-10.15 NM_052862.2	RCSO1
236295_s_at	-5.84	-7.91 NM_178844	NO3D3
205285_s_at	-5.80	-7.46 NM_001465.3	FYB
211343_s_at	-5.77	-4.73 NM_005203.3	COL13A1
221564_at	-5.76	-3.40 NM_001535	HRMT1L1
236172_at	-5.75	-5.14 NM_000752	LTB4R
203186_s_at	-5.73	-5.79 NM_019554.1	S100A4
230133_at	-5.73	-4.94 NM_018835	MNAB
227224_at	-5.73	-8.06 NM_018037	FLJ10244
201137_s_at	-5.72	-7.56 NM_002121	HLA-DPB1
212203_x_at	-5.72	-6.87 NM_021034.1	IFITM3
1556874_a_at	-5.71	-5.39 BC032952.2	RKH2D
224973_at	-5.71	-5.57 AF30451.1	FAM48A
201752_s_at	-5.70	-6.19 NM_001121.2	ADD3
204046_at	-5.68	-6.05 NM_004573	PLCB2
226140_s_at	-5.67	-8.96 XM_166659.6	OTUD1
224027_at	-5.65	-6.81 NM_019846	CCL28
213046_at	-5.65	-4.97 XM_038150.5	MAST3
214083_at	-5.64	-6.38 NM_002719	PPP2R3C
226602_s_at	-5.62	-8.39 NM_004327.3	BCR
205398_s_at	-5.61	-6.84 NM_005902.3	SMAD3
1559018_at	-5.59	-6.70 NM_006504	PTPRE
239163_at	-5.59	-5.11 NM_003337	UBE2B
211005_at	-5.57	-6.31 NM_001014987.1	LAT
209864_at	-5.57	-4.27 NM_012083.2	FRAT2
205839_s_at	-5.54	-10.25 NM_004758.1	BZRAP1
203117_s_at	-5.50	-3.95 NM_014871.2	USP52
205718_at	-5.43	-4.44 NM_000889.1	ITGB7
225949_at	-5.42	-7.58 NM_178584.2	NRPB2
204857_at	-5.42	-3.77 NM_001013836.1	MAD1L1
217992_s_at	-5.38	-3.80 NM_024329.4	EHD2
205213_at	-5.38	-7.47 NM_014716.2	CENTB1
207361_at	-5.34	-7.41 NM_012257	HBP1
214054_at	-5.33	-4.95 NM_003974.2	DOCK2
155371_at	-5.33	-4.47 AK093650.1	FAM13A1OS
222018_at	-5.32	-3.63 NM_005594	NACA
203628_at	-5.30	-9.00 NM_000875	IGF1R
206170_at	-5.27	-4.93 NM_000024.3	ADRB2
206965_at	-5.26	-12.45 NM_016285.2	KLF12
227236_at	-5.25	-14.49 NM_005725.3	TSPAN2
212334_at	-5.20	-5.40 NM_002076.2	GNS
213902_at	-5.20	-3.69 NM_004315	ASAH1
201681_s_at	-5.20	-7.97 NM_004747.3	DLG5
212757_s_at	-5.19	-5.12 NM_172169.1	CAMK2G
204890_s_at	-5.18	-5.87 NM_003556.2	LCK
203402_at	-5.14	-4.84 NM_003636	KCNAB2
235139_at	-5.11	-3.97 NM_031498.1	GNMT2
205571_at	-5.08	-3.97 NM_015929.2	LIPT1
203286_at	-5.07	-5.45 NM_014901.4	RNF44
235780_at	-5.07	-4.83 NM_207578.1	PRKACB
235695_at	-5.07	-4.71 NM_001586	INPP4A
1559975_at	-5.06	-7.02 NM_001731	BTG1
207686_x_at	-5.06	-12.97 NM_001228.3	CASP8
210006_at	-5.05	-3.38 NM_015407.3	ABHD14A
211824_x_at	-5.02	-4.46 NM_014922.3	NALP1
203633_at	-5.00	-6.09 NM_001976	CPT1A
203909_s_at	-4.97	-6.58 NM_003759.1	SLC44A4
228062_at	-4.96	-5.94 NM_153757.1	NAP1L5
235721_at	-4.96	-6.60 NM_178502.2	DTX3
231904_at	-4.95	-3.31 NM_006758	UZAF1
203029_s_at	-4.94	-10.84 NM_002847.2	PTPRN2
212332_at	-4.94	-4.71 NM_005611.2	RBL2
204294_at	-4.93	-6.25 NM_000451.2	AMT
238025_at	-4.93	-5.90 NM_152649.1	MLKL
218807_at	-4.93	-7.28 NM_006113.3	VAV3
209398_at	-4.91	-6.99 NM_005319.3	HIST1H1C
221769_at	-4.91	-4.41 NM_080861.3	SPSB3
211676_s_at	-4.91	-7.31 NM_000416.1	IFNGR1
1562369_at	-4.90	-5.44 NM_032415	CARD11
226757_at	-4.90	-7.21 NM_001547.3	IFIT2
204834_at	-4.85	-10.38 NM_006682	FGL2
215275_at	-4.85	-9.97 AK126139.1	TRAF3IP3
206296_x_at	-4.84	-3.78 NM_007181.3	MAP4K1
211559_s_at	-4.84	-6.04 NM_004354.1	COX52
227134_at	-4.81	-5.12 NM_032872.1	SYTL1
209048_s_at	-4.80	-4.45 NM_183047.1	PRKCBP1
1559883_s_at	-4.80	-7.87 NM_015474.2	SAMHD1
218168_s_at	-4.79	-4.08 NM_020247	CABC1
211395_x_at	-4.77	-7.69 NM_001002723.1	FCGR2B
207100_s_at	-4.77	-3.84 NM_016830.2	VAMP1
238476_at	-4.76	-6.17 NM_153607	LOC153222
202657_s_at	-4.75	-6.28 NM_014755.1	SERTAD2
219821_s_at	-4.75	-5.06 NM_018988.1	GFOD1
1552623_at	-4.74	-7.00 NM_032852.2	HSN2D
207736_at	-4.72	-22.32 NM_017831.2	RNF125
244050_at	-4.71	-8.12 NM_001010915.1	PTPLAD2
1558002_at	-4.71	-4.88 NM_007178	UNRIP
225274_at	-4.70	-6.60 NM_016297	PCL1
219854_at	-4.70	-3.60 NM_021030.2	ZNF14
1556396_at	-4.70	-8.85 NM_018682	MLL5
210647_x_at	-4.69	-4.54 NM_001004426.1	PLA2G6
216748_at	-4.68	-5.75 AK024890.1	PYHIN1
1554250_s_at	-4.68	-8.06 BC033871	TRIM74
205125_at	-4.66	-6.80 NM_006225.2	PLCD1
210253_at	-4.65	-3.87 NM_006410	HTATIP2
225446_at	-4.65	-4.41 NM_001007246.1	BRWD1
210281_s_at	-4.65	-11.57 NM_003453.2	ZNF198
224800_at	-4.65	-8.55 NM_020830.3	WDFY1
223228_at	-4.62	-3.57 NM_032287.2	LDOC1L
203778_at	-4.62	-3.59 NM_005908.3	MANBA
204963_at	-4.62	-5.70 NM_000855.2	SELL
221666_s_at	-4.61	-5.45 NM_145182.1	PYCARD
204425_at	-4.60	-3.16 NM_001666.2	ARHGAP4
219657_s_at	-4.58	-5.71 NM_016531.3	KLF3
219033_at	-4.58	-6.52 NM_024615.2	PARP8
219855_at	-4.58	-5.43 NM_018159.2	NUDT11
226894_at	-4.57	-13.01 NM_001004065.3	AKAP2
230872_s_at	-4.56	-6.68 AK023960.1	TLL3
223469_at	-4.54	-3.23 NM_017712.2	PGPEP1
200661_at	-4.54	-3.59 NM_000308.1	PPGB
205898_at	-4.52	-3.72 NM_001337.3	CX3CR1
223349_s_at	-4.49	-4.61 NM_032515.3	BOOK
212510_at	-4.48	-3.86 NM_015141.2	GFDL
226157_at	-4.47	-4.33 NM_006286	TFDP2
218487_at	-4.47	-5.87 NM_000031.4	ALAD
219228_at	-4.46	-18.25 NM_018555.4	ZNF331
230972_at	-4.46	-6.00 NM_152326.2	ANKRD9
202704_at	-4.45	-7.07 NM_005749.2	TGB1
239122_x_at	-4.44	-6.23 NM_006850	IL24
212914_at	-4.40	-3.93 NM_175709.2	CBX7
207556_s_at	-4.38	-3.52 NM_003646.2	DGK2
231271_x_at	-4.37	-4.40 NM_020677	HSCARG
228483_s_at	-4.36	-8.87 NM_015975	TAF9L
202208_s_at	-4.36	-4.16 NM_005737.3	ARL4C

202501_at	-4.35	-4.17 NM_014268.1	MAPRE2
228813_at	-4.33	-5.69 NM_006037	HDAC4
222912_at	-4.33	-4.20 NM_004041.3	AFRB1
202245_at	-4.31	-3.78 NM_002340.3	LSS
228370_at	-4.30	-3.51 NG_002690.1	SNORD
212689_s_at	-4.28	-3.90 NM_018433.3	JMJD1A
202887_s_at	-4.27	-4.39 NM_019058.2	DDIT4
1552654_a_at	-4.27	-3.79 NM_033204.2	ZNF101
201720_s_at	-4.27	-5.36 NM_008762.1	LAPTM5
229036_at	-4.26	-4.01 NM_001024843.1	TNRC6B
22954_s_at	-4.24	-4.68 NM_177401.4	MIDN
204613_at	-4.23	-3.62 NM_002661.1	PLCG2
208498_s_at	-4.21	-19.20 NM_020978.3	AMY2B
204499_at	-4.20	-6.08 NM_015239	AGTPBP1
229312_s_at	-4.18	-4.58 NM_025211.2	GKAP1
213376_at	-4.17	-4.24 NM_014950	ZBTB1
243951_at	-4.17	-15.34	0 ABCB1
200632_s_at	-4.16	-3.36 NM_006096.2	NDRG1
1557257_at	-4.15	-6.55 NM_003921	BCL10
213956_at	-4.15	-5.80 NM_008725.2	CD6
238633_at	-4.15	-4.43 NM_025209	EPC1
204949_at	-4.14	-6.25 NM_002162.2	ICAM3
1555476_at	-4.12	-6.88 BC017880	IREB2
242829_x_at	-4.10	-13.99 NM_012158	FBXL3A
216273_s_at	-4.08	-3.65 NM_006432.3	PFM2C
203332_s_at	-4.08	-3.23 NM_005411.3	INPP5D
226080_at	-4.08	-4.45 NM_033389.2	SSH2
219284_at	-4.07	-4.52 NM_024610.3	HSPBAP1
217286_s_at	-4.07	-4.34 NM_022477.2	NDRG3
214814_at	-4.06	-3.63 NM_133370	YTS21
211988_at	-4.05	-3.34 NM_003324.3	H3F3B
212001_at	-4.05	-3.54 AV738039	SFRS14
202747_s_at	-4.05	-3.24 NM_004867.3	ITM2A
204197_s_at	-4.05	-3.75 NM_004350.1	RUND3
205758_at	-4.03	-6.17 NM_001768.5	CDBA
1552497_a_at	-4.00	-3.53 NM_052931.3	SLAMF6
204079_at	-3.99	-5.08 NM_001008566.1	TFST2
224806_at	-3.96	-6.58 NM_005082.4	TRIM25
244360_at	-3.96	-5.84 BC063316.1	FBXL17
218285_s_at	-3.95	-4.22 NM_020139.3	DHRS6
200701_at	-3.94	-3.91 NM_006432.3	NPC2
223679_at	-3.93	-4.69 NM_001904	CTNNB1
212406_s_at	-3.93	-4.92 NM_018257.1	PCMTD2
214714_at	-3.93	-4.58 NM_032164.2	ZNF394
231121_at	-3.91	-7.27 NM_032383	HP33
209696_at	-3.90	-6.66 NM_000507.2	FBP1
217088_s_at	-3.90	-3.61 NM_004829.4	NCR1
232392_at	-3.90	-4.54 NM_003017	SFRS3
226218_at	-3.89	-6.46 NM_002185	ILTR
230748_at	-3.88	-5.78 NM_004694	SLC16A6
228083_at	-3.88	-8.19 NM_001005737.1	CACNA2D4
235024_at	-3.87	-5.47 NM_024900.2	PHF17
205352_at	-3.86	-5.17 NM_005025.2	SERPBN1
201302_at	-3.86	-5.93 NM_001153.2	ANKK4
1553117_a_at	-3.86	-3.74 NM_007271.2	STK38
1568949_at	-3.85	-4.12 NM_012417	PITPNC1
203723_at	-3.84	-3.04 NM_002221.2	ITPKB
201087_at	-3.84	-3.98 NM_002859.1	PKN
220970_at	-3.84	-4.05 NM_203301.1	FBXO33
209348_s_at	-3.84	-4.15 NM_001031804.1	MAF
203047_at	-3.82	-3.76 NM_005990.2	STK10
212249_at	-3.82	-9.22 NM_181504.2	PIK3R1
218178_s_at	-3.81	-3.82 NM_020412.3	CHMP1B
216705_s_at	-3.80	-5.95 NM_000022.2	ADA
205139_s_at	-3.80	-6.59 NM_005715.1	UST
206724_at	-3.78	-3.64 NM_003655.2	CBX4
214196_s_at	-3.78	-3.24 NM_000391.2	TPP1
243649_at	-3.77	-3.74 NM_012179	FBXO7
226352_at	-3.77	-6.16 NM_152405	JMY
213620_s_at	-3.75	-3.49 NM_000873.2	ICAM2
210140_at	-3.75	-6.52 NM_003650.2	CS17
1554037_a_at	-3.75	-4.91 NM_014797.1	ZBTB24
236829_at	-3.75	-3.92 NM_007114	TMF1
232044_at	-3.74	-4.51 AK023612.1	RBBP6
228730_s_at	-3.74	-3.02 NM_138355.2	SCRN2
1555962_at	-3.74	-5.58 AK00770.1	B3GNT7
214496_x_at	-3.73	-5.55 NM_012330	MYST4
208858_s_at	-3.73	-3.52 NM_015292.1	FAM62A
200982_s_at	-3.73	-5.56 NM_001155.3	ANKX6
205383_s_at	-3.72	-5.47 NM_019642.2	ZBTB20
224871_at	-3.71	-4.12 NM_182752.3	FAM79A
236778_at	-3.71	-6.93 NM_000489	ATRX
223640_at	-3.71	-3.87 NM_014266.3	HCST
222279_at	-3.69	-4.78 AK092748.1	HLA-F
223746_at	-3.69	-8.47 NM_006282	STK4
227306_x_at	-3.69	-3.83 NM_021070	LTPB3
219421_at	-3.69	-3.09 NM_022766.4	CEBR
205255_x_at	-3.69	-4.20 NM_201632.1	TCF7
203521_s_at	-3.68	-3.19 NM_014345.1	ZNF318
224910_at	-3.68	-3.05 NM_014316	CARHSP1
200694_s_at	-3.68	-5.12 NM_006145.1	DNAJB1
204346_s_at	-3.67	-3.43 NM_170713.1	RASSF1
218456_at	-3.67	-4.82 NM_001002259.1	C100C1
214963_at	-3.67	-4.52 AK028236	NUP160
226344_at	-3.66	-3.56 NM_001011656.1	ZMAT1
227811_at	-3.66	-3.88 NM_033086.1	FGD3
212727_at	-3.65	-3.52 NM_021120	DLG3
226066_at	-3.65	-3.54 NM_003177	SYK
201847_at	-3.65	-3.22 NM_000235.2	LIPA
201656_at	-3.64	-7.54 NM_000210.1	ITGA6
200885_at	-3.64	-3.53 NM_175744.3	RHOCC
211458_s_at	-3.64	-9.43 NM_031412.2	GABARAPL1
228727_at	-3.63	-8.82 NM_001157	ANKK1
243631_at	-3.63	-6.08 AI830997	HSMP88
224671_at	-3.63	-3.04 NM_145255.2	MRPL10
227616_at	-3.62	-6.18 NM_182557.1	BCL9L
217591_at	-3.62	-7.34 NM_005414	SKIL
229955_at	-3.62	-3.16 NM_012175	FBXO3
219094_at	-3.60	-3.58 NM_014154.2	ARMC8
203081_at	-3.60	-3.70 NM_020248.2	CTNBP1
201813_s_at	-3.59	-4.57 NM_014744.1	TBC1D5
201580_s_at	-3.59	-3.06 NM_021156.2	TXNDC13
219191_s_at	-3.59	-3.48 NM_016293.2	BIN2
1555851_s_at	-3.59	-3.20 NM_003099.2	SEPW1
227897_at	-3.59	-3.75 NM_002886	RAP2B
237107_at	-3.58	-6.87 NM_003690	PRKRA
208454_s_at	-3.58	-3.98 NM_016134.2	PGCP
210886_x_at	-3.57	-3.21 NM_007233	TP53AP1
203069_at	-3.57	-3.15 NM_014861.2	KLHL21
238987_at	-3.56	-5.38 NM_001497	BAGAL1
209815_at	-3.56	-4.73 AK124593.1	PTCH
1554544_a_at	-3.56	-3.84 NM_001025100.1	MBP
209683_at	-3.56	-5.45 AK001942.1	FAM49A
236026_at	-3.55	-3.12 NM_153498.2	CAMK1D
215392_at	-3.55	-10.68 AJ148154	USP3
205668_at	-3.54	-3.31 NM_002349.1	LY75
214958_s_at	-3.54	-4.58 NM_007267.5	TM6C
212242_at	-3.53	-4.68 NM_006000.1	TUBA1
218821_at	-3.53	-4.99 NM_024663.3	NPEPL1
204862_s_at	-3.53	-3.55 NM_002513.2	NME3
225350_s_at	-3.53	-3.92 NM_024646.1	ZYG11B

204805_s_at	-3.53	-3.14 NM_006026.2	HIFX
208439_s_at	-3.52	-4.92 NM_005248.1	FOR
208661_s_at	-3.50	-4.18 NM_001001894.1	TTC3
233169_at	-3.50	-3.88 NM_021632	ZNF350
38290_at	-3.47	-3.85 NM_006480.4	RGS14
204642_at	-3.47	-22.76 NM_001400	EDG1
201050_at	-3.46	-4.13 NM_001031696.1	PLD3
229141_at	-3.46	-4.15 NM_001006623.1	WDR33
219494_s_at	-3.46	-5.01 NM_020062.3	SLC24A8
213906_at	-3.45	-4.71 AW592266	MYBL1
201285_at	-3.44	-3.56 NM_013446.2	MKRN1
221645_s_at	-3.43	-5.30 NM_018300.2	ZNF83
204912_at	-3.42	-3.07 NM_001558.2	IL10RA
221293_s_at	-3.42	-4.30 NM_022047.2	DEF6
212843_at	-3.41	-4.16 NM_000615	NCAM1
201009_s_at	-3.41	-3.06 NM_006472.1	TXNIP
244443_at	-3.41	-4.55 NM_001271	CHD2
203020_at	-3.40	-4.24 AB007940.1	RABGAP1L
242463_x_at	-3.40	-5.14 NM_198457.1	ZNF600
203543_s_at	-3.39	-6.49 NM_001206.2	KLF9
202161_at	-3.39	-3.14 NM_002741.3	PKN1
200859_x_at	-3.39	-4.00 NM_001456.1	FLNA
205771_s_at	-3.39	-5.49 NM_138633.1	AKAP7
221953_s_at	-3.38	-5.22 NM_006690	MMP24
221727_at	-3.38	-3.45 BC071655.1	SUB1
225136_at	-3.38	-4.95 NM_007043	HRS2
202439_s_at	-3.37	-4.98 NM_000202.2	IDS
217783_s_at	-3.36	-3.86 NM_016061.1	YPEL5
202789_at	-3.36	-4.15 NM_002660.2	PLCG1
201462_at	-3.36	-3.44 NM_014766.2	SCRN1
219096_at	-3.35	-4.23 NM_005900.2	PLA2G4B
204206_at	-3.34	-3.62 NM_020310.2	MNT
226249_at	-3.33	-7.97 XM_941246.1	SNX30
220999_s_at	-3.32	-3.23 NM_001037332.1	CYFIP2
230609_at	-3.32	-9.82 NM_014666	ENTH
227639_at	-3.30	-3.27 NM_005462	PIGK
156342_s_at	-3.30	-4.42 NM_003143	SSBP1
228410_at	-3.30	-3.62 NM_080612.1	GAB3
214683_s_at	-3.26	-3.64 NM_004071.2	CLK1
219221_at	-3.26	-5.79 XM_929657.1	ZBTB38
206279_at	-3.26	-3.70 NM_002760	PRKY
203607_at	-3.25	-4.25 NM_014937.2	INPBP5
203445_s_at	-3.25	-3.15 NM_005730.3	CTDSP2
230529_at	-3.24	-3.44 NM_016217	HECA
228940_at	-3.24	-3.78 XM_933340.1	NDUFB4
209994_s_at	-3.23	-3.96 NM_018850.1	ABCB4
219170_at	-3.23	-3.52 NM_024333.1	FSD1
205171_at	-3.23	-4.49 NM_002830.2	PTPN4
202595_s_at	-3.23	-3.98 NM_015344.1	LEPROTL1
201751_at	-3.22	-3.84 NM_014876.3	JOSD1
227223_at	-3.22	-7.84 NM_004902	RNPC2
219491_at	-3.22	-3.11 NM_024525.2	TTC13
230375_at	-3.22	-6.40 NM_032670	DKFZ564B0769
218217_at	-3.21	-3.35 NM_021626.1	SCOPEP1
214071_at	-3.21	-13.01 NM_002071	GNAL
214085_x_at	-3.21	-5.58 NM_006851	GLIPR1
208998_at	-3.20	-4.18 NM_003355.2	UCP2
215483_at	-3.20	-4.43 NM_005751	AKAP9
230719_at	-3.20	-4.01 NM_002715	PPP2CA
225557_at	-3.19	-5.55 NM_033027.2	AXUD1
213575_at	-3.19	-6.86 NM_013293	TRA2A
230141_at	-3.18	-4.09 NM_002892	RBBP1
217478_s_at	-3.18	-5.11 NM_006120.2	HLA-DMA
210915_x_at	-3.16	-4.46 BC030533.1	TRBC1
214482_at	-3.15	-4.10 NM_008977.2	ZBTB25
204174_at	-3.15	-4.06 NM_001629.2	ALOX5AP
239695_at	-3.14	-6.06 BX648044.1	JAK1
209160_at	-3.14	-3.64 NM_003739.4	AKR1C3
229586_at	-3.14	-7.84 BC027491.2	CHD9
212221_x_at	-3.14	-4.29 BX647783.1	AFMID
215731_s_at	-3.13	-3.02 NM_022782	MPHOSPH8
202031_s_at	-3.11	-3.47 NM_001033518.1	WIPI2
239101_at	-3.11	-5.72 NM_031483.3	ITCH
201849_at	-3.11	-7.34 NM_004052.2	BNIP3
155862_s_at	-3.09	-3.55 NM_152969.2	ZNF548
238509_at	-3.08	-3.10 NM_003592	CUL1
238551_at	-3.07	-3.22 NM_173540.1	FUT11
241403_at	-3.07	-4.38 BC065732.1	CLK4
212472_at	-3.07	-4.18 NM_014632	MICAL2
202878_s_at	-3.05	-3.30 NM_012072.3	C1OR1
215805_at	-3.04	-5.73 NM_009540	NCOA2
212980_at	-3.04	-3.49 AL050376.1	USP34
209604_s_at	-3.04	-5.29 NM_001002295.1	GATA3
236662_at	-3.03	-5.58 AI139639	CRAMP1L
224856_at	-3.02	-3.83 NM_004117.2	FKBP5
221219_s_at	-3.01	-4.31 NM_017566.2	KLHDC4
222074_at	-3.01	-4.46 NM_000374	URCD
1569030_s_at	-3.00	-3.22 NM_016118	NYREN18

**Supplemental Table 2: qPCR Primers Used**

<b>Gene</b>	<b>Forward Sequence</b>	<b>Reverse Sequence</b>	<b>T<sub>m</sub></b>	<b>Application</b>
PRDM1alpha	TCAAACCTCAGCCTCTGTCCA	TCCAGCACTGTGAGGTTTCA	55	expression
PRDM1beta	CCCGAACATGAAAAGACGAT	ATAGCGCATCCAGTTGCTTT	55	expression
IFNG	GAAAAGCTGACTAATTATTCGGTAAC	GTTCCAGCCATCACTTGGATGA	55	expression
TNFA	TCCTTCAGACACCCTCAACC	AGGCCCCAGTTTGAATTCTT	58	expression
LTA	CTGTCTGGCTGAGGATTTCA	CCCTCTCTCCATCCTCCATA	58	expression
DAP10	GGCTGCAGCTCAGACGAC	AGGAGCGGCAGAGAGAGG	58	expression
18S	GTAACCCGTTGAACCCATT	CCATCCAATCGGTAGTAGCG	55	expression
CIITA <sub>pIII</sub>	TCCCAACTGGTGACTGGTTA	CAAGGATGCCTTCGGATG	55	ChIP
CIITA <sub>pIV</sub>	GGCCACAGTAGGTGCTTGGT	CTCGTCCGCTGGTCATCCT	55	ChIP
PAX5	GATTTGGGCGAGAACAGGAC	GAAGGCACCGTGAAATGATTA	55	ChIP
IFNB1	TGCTCTGGCACAACAGGTAG	CAGGAGAGCAATTTGGAGGA	60	ChIP
SLAMF7 (CRACC)	GGCCAGGAAAGTGAAACAGA	TCAGAGCTTAAGTTGCCATGT	55	ChIP
MYOBe2	proprietary (obtained from Diagenode)		60	ChIP
IFNG I	CACCTGGGGTGACAAGAAAT	GCCAATCACAAGAGGGAAAA	55	ChIP
IFNG II	CTTCCGTAGGTTTGGCTTG	GGCGTAGATTTCTTCTTCCACTC	55	ChIP
IFNG III	TGGTGTGAAGTAAAAGTGCCTTCA	CGATGAGACAGACCCATTATGC	60	ChIP
IFN IV	GACTGGGTGAGGGAGATTG	GGGAGTGACAGGTAGGGAGA	55	ChIP
TNF I	CAACCTCCGAAACTGAGA	AGGAAGGAAGGGTAAGACTG	55	ChIP
TNF II	TACCGCTTCTCCAGATGAG	TGCTGGCTGGGTGTGCCAA	60	ChIP
TNF III	TGCATCTGCCTCTTCTTG	GGTCCGAGGGATCTTAAAGC	55	ChIP
LTB IV	TCCATCCCTCAAGATTCCAG	AGGTTTCCAATGTGGTTTGC	55	ChIP

## Supplemental Figure Legends

### Supplemental Figure 1

Regression analysis was carried out to assess donor-to-donor variability for both resting and 24 hour stimulated samples. Signal intensities obtained from microarray analysis were plotted on an x-y scatter plot and a  $R^2$  value was calculated using a linear fit regression line.

### Supplemental Figure 2

NKL cells express a *PRDM1* transcript variant corresponding to deletion of exon 6. RT-PCR was carried out using primers specific for the 5<sup>th</sup> and 7<sup>th</sup> exons of the human *PRDM1* gene. Overexpression of cDNA obtained from either U2OS cells expressing a flag-tagged PRDM1 construct or NK-92 cells yielded the expected 311bp product, while cDNA obtained from NCI-H929 or NKL cells yielded both a 311bp and 182bp products.

### Supplemental Figure 3

Primary human NK cells were stimulated with IL-2 (100U/mL) and IL-12 (10ng/mL) for 96 hours. A) qRT-PCR analysis for *IFNG* and *TNF* mRNA. B) Immunoblot analysis of PRDM1 expression. Data shown are from a representative experiment.

### Supplemental Table 1:

Excel file containing list of differentially expressed known genes showing 3-fold change in expression in both donors. Unannotated transcripts and genes with signal intensities of <500 after stimulation (for increased list) and <500 before stimulation (for decreased list) were excluded.

### Supplemental Table 2:

Sequence and annealing temperature of all oligonucleotide primers used in this report.