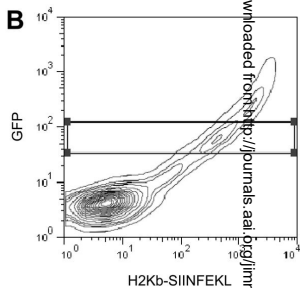
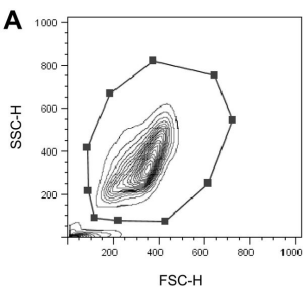


## Supplementary Figure 1

**Representative gating of Ub XX SIINFEKL transfected HeLa-Kb cells.** Following transfection of HeLa-Kb cells with Ub HH SIINFEKL, cells were stained with 25.D1.16 and analyzed by flow cytometry. Live cells were first gated on (A) followed by gating on GFP-expressing cells to limit the analysis to transfected cells (B). Cells expressing large amounts of GFP were gated out due to saturation of the H-2K<sup>b</sup>-S-L signal.



Supplementary Figure 1