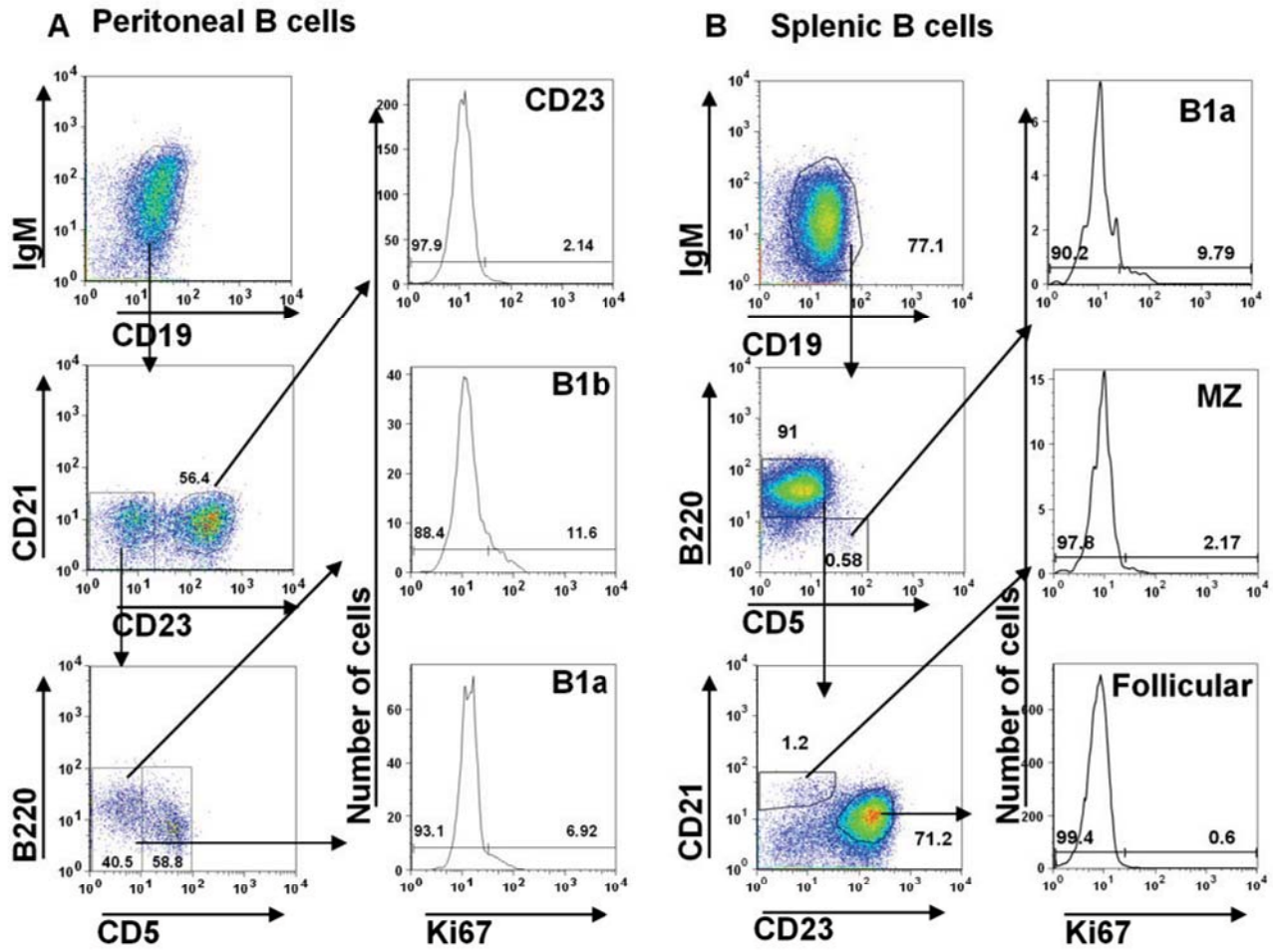


Suppl Fig 1



Supplementary Figure 1. Gating for splenic and peritoneal B cell populations. FACS analysis of splenic and peritoneal B cells was carried out as follows. *A*, Peritoneal B cells were identified by first gating using forward scatter and side scatter profiles for lymphocytes, on pulse width to eliminate doublets and then on positive staining for IgM and CD19. The CD23⁻CD21⁻ cell fraction were examined for their B220 and CD5 expression to show the B1b (CD5⁻) and B1a fractions (CD5⁺). CD23⁺ cells were also identified. Ki67 expression in CD23⁺, B1b and B1a populations was examined by intracellular FACS. *B*, Splenic B cells were identified by first gating and staining for IgM and CD19 as above. This population was gated further on positive B220 and negative CD5 expression. CD23 and CD21 expression were used to identify the CD21⁺ marginal zone (MZ) fraction and the CD23⁺ follicular recirculating B cell population. Ki67 expression in these cell types was then determined.