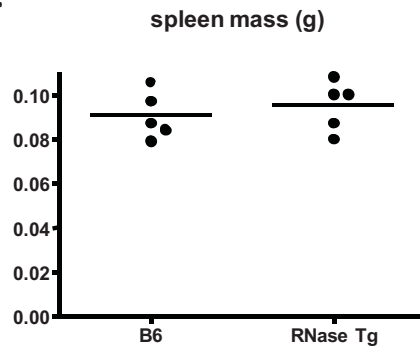
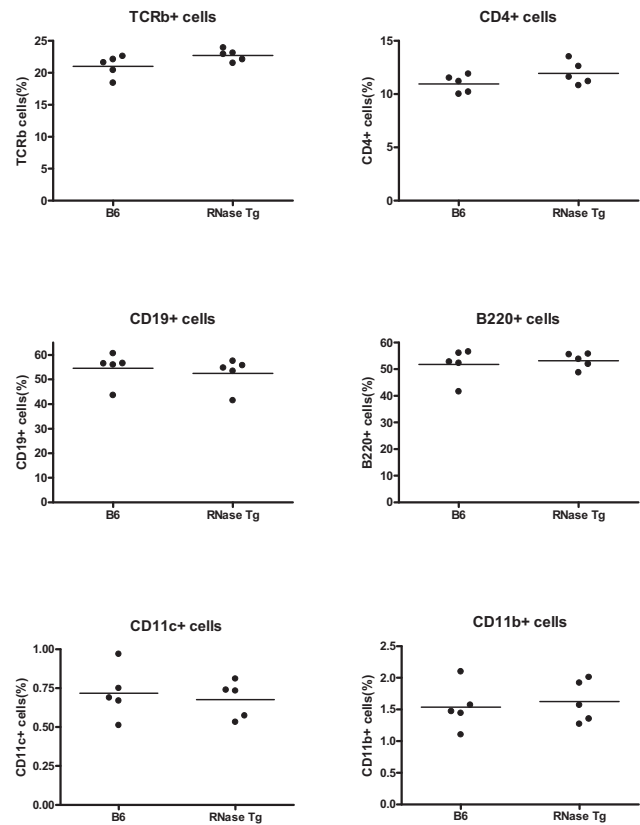


Supplementary Material

a.



b.



Supplementary Fig.1. a. Spleen weights from WT mice compared to RNase Tg mice. b.

Analysis of the proportions of T, B and myeloid cells in WT mice compared to RNase Tg mice.

Supplementary Table 1. Light microscopic analysis of 3.5 mo old WT (#1,2), TLR7 x RNase (DTg) (#3-7) and TLR7 Tg (#8-13) mouse livers.

Mouse #	Lesion Severity Score* (range 0-5+)	Inflammatory Foci* (foci /5, 10x fields)	Histologic Features (primary lesion site; cell type [focus size] ; necrosis; bridging lesion [bl] and/or bile duct hyperplasia [bdh])
1	0	0	Normal
2	0	0	Normal
3	1	4	Portal triad; mononuclear (small foci); rare individual cell necrosis/apoptosis; none
4	3	13	Portal triad; mononuclear (small-moderate foci), few pmn; minimal individual cell and limiting plate necrosis/apoptosis; early bl, minimal bdh
5	2	6	Portal triad; mononuclear (small foci); minimal individual cell necrosis/apoptosis; none
6	1	0	Parenchymal; mononuclear (small foci); none; none
7	2.5	11	Portal triad; mononuclear (small-moderate foci); focal pmn; rare individual cell and limiting plate necrosis/apoptosis; early bl, minimal bdh
8	3.5	15	Portal triad; mononuclear (moderate-large foci); focal pmn; rare individual cell and limiting plate necrosis/apoptosis; early bl, moderate bdh
9	4	28	Portal triad; mononuclear (moderate-large foci), few pmn; rare individual cell and limiting plate necrosis/apoptosis; moderate bl, moderate bdh
10	3	19	Portal triad; mononuclear (moderate-large foci); rare individual cell and limiting plate necrosis/apoptosis; early bl, minimal bdh
11	5	42	Portal triad; mononuclear (small to large foci); few

			pmn; scattered individual cell and limiting plate necrosis/apoptosis; moderate bl, moderate bdh
12	4.5	27	Portal triad; mononuclear (moderate-large foci); few pmn; scattered individual cell and limiting plate necrosis/apoptosis; moderate bl, moderate bdh
13	5	47	Portal triad; mononuclear (small to large foci); focal pmn; scattered individual cell and limiting plate necrosis/apoptosis; moderate bl, moderate bdh

***Foci** – discrete foci/random 10x field containing 20 or more inflammatory cells; **Severity score** represents an aggregate score of quantitative (inflammatory foci counts) and semi-quantitative lesions. Scale ranges from 1 (typically minimal and focal) to 5 (typically severe and widespread); 0 is normal.

Supplementary Table 2. Primers for QPCR and size of the fragment in bp.

18s	F	5' GAG GGA GCC TGA GAA ACG G 3'
68 bp	R	5' GTC GGG AGT GGG TAA TTT GC 3'
Ctsg	F	5' ACA TCC AAA TGC GAG AAA GG 3'
146 bp	R	5' AGG CTT CAC CGA TCC ACT C 3'
Elane	F	5' TGG AGG TCA TTT CTG TGG TG 3'
182 bp	R	5' GGT CAA AGC CAT TCT CGA AG 3'
Mpo	F	5' CAG GTC TCC AAT GCC ATC GTG 3'
247 bp	R	5' GGA TGC AGT CCT TTT GGT TC 3'
Prtn3	F	5' CCT GAT CCA CCC GAG ATT C 3'
161 bp	R	5' CGG GGT TGT AAT TGT TCT GG 3'
Tnfa	F	5' GTC AGG TTG CCT CTG TCT CA 3'
82 bp	R	5' TCA GGG AAG AGT CTG GAA AG 3'