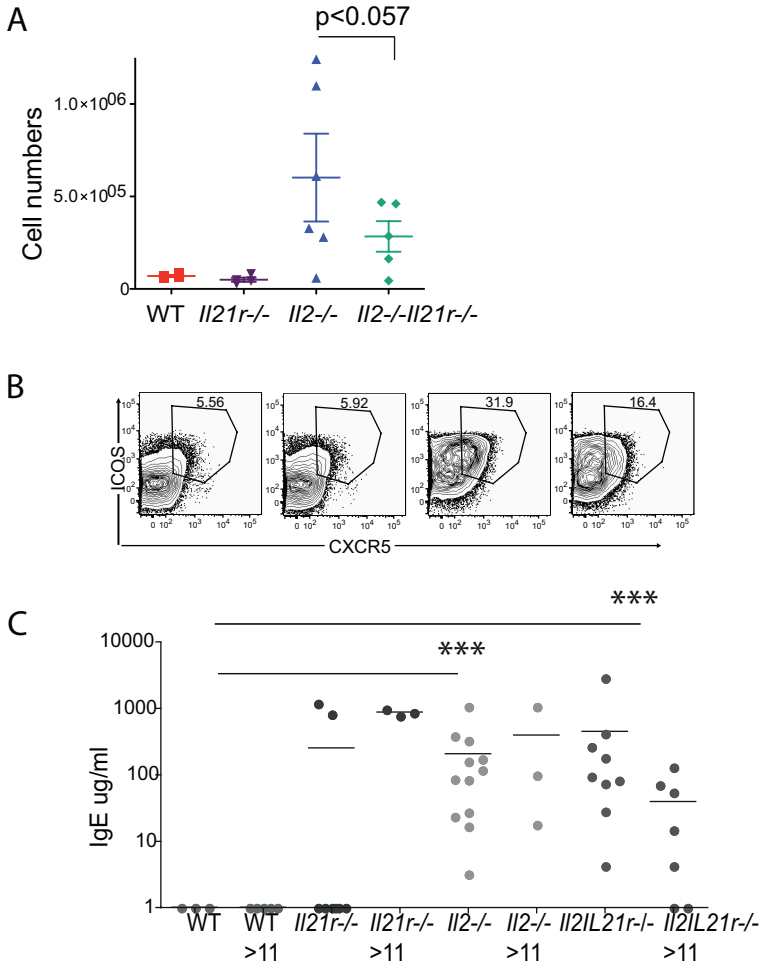


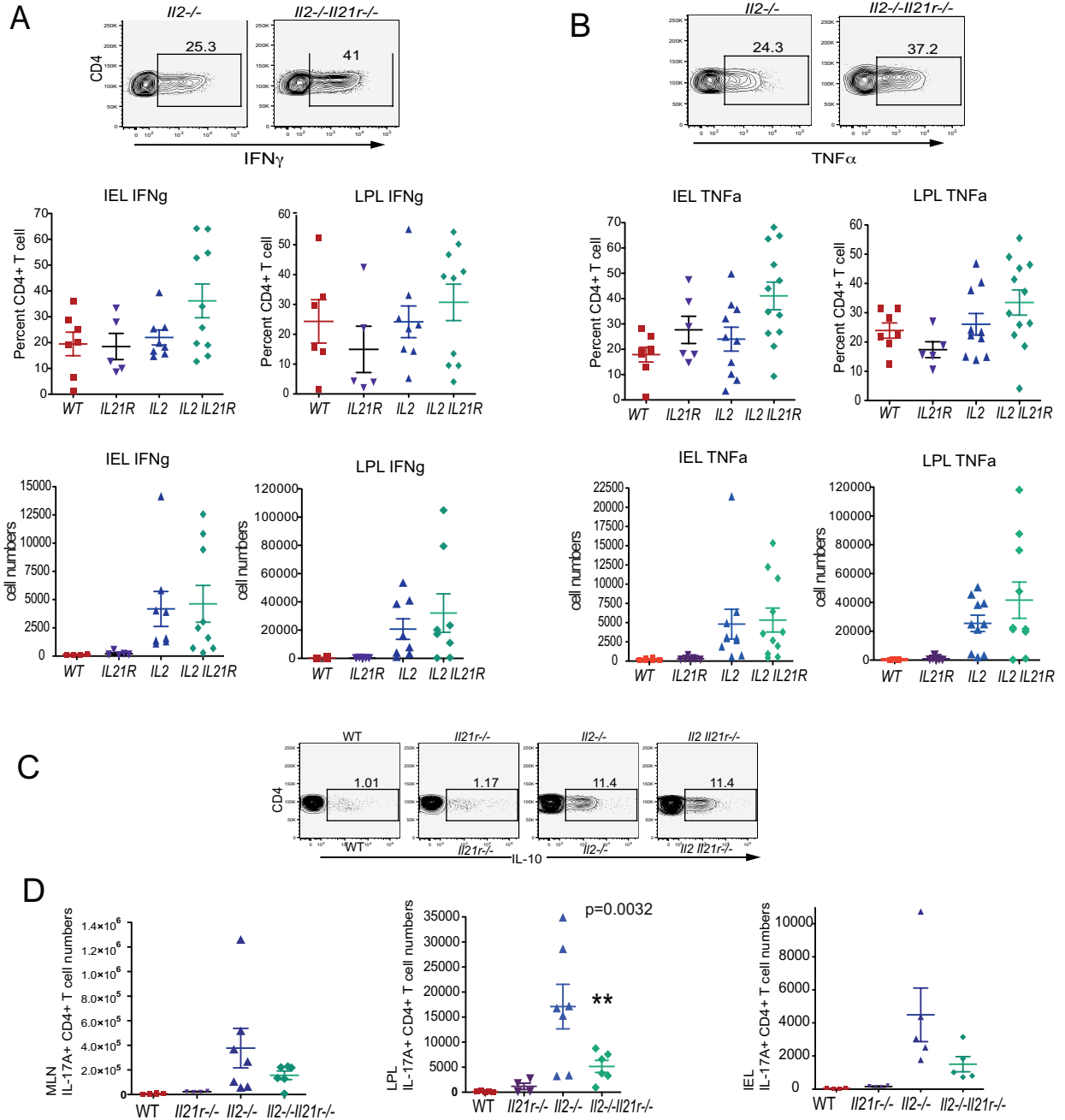
Supplementary Figure 1

(a) Suppressive activity of WT and *Il21r*^{-/-} CD25⁺CD4⁺ T regs (Treg) was measured by culture in reducing ratios with 2×10^5 CFSE labelled CD4⁺ CD25⁻ T effectors (Teff), anti-CD3 at 2ug/ml and irradiated APCs for 72 hours from 3 experiments (b) Representative histograms showing WT or *Il21r*^{-/-} T reg suppression of WT effector population at various ratios. 3 Experiments where n=3. (c) Quantification of CD4⁺ CD3⁺ T cells in Spleen, MLN and lamina propria of genotypes indicated between 8-12 weeks of age.



Supplementary Figure 2

(a) Quantification of GL7+B220+ GC numbers in MLN analysed by flow cytometry in genotypes indicated between 9-12 weeks of age. Data are pooled from 4-6 separate experiments and are represented as values from individual mice \pm SEM. (b) Representative flow cytometry showing ICOS^{hi}CXCR5^{hi} T follicular helper cells gated on total CD3⁺CD4⁺ T cells, from 4 separate experiments (c) Quantification of serum IgE concentrations measured by ELISA in young (<11 weeks) and mature (11-30 weeks) mice. Data indicate the mean and values from individual mice pooled from 2 separate experiments. P values of < 0.001 (***) were calculated comparing similar age groups using Student's T test. P values were calculated using one-way ANOVA and Bonferroni's post-test compared to WT values (* $p < 0.05$, ** $p < 0.01$ *** $p < 0.001$).



Supplementary Figure 3

Representative dot plots and quantitation of CD4⁺ CD3⁺ T cells in epithelium (IEL) and lamina propria (LPL) lymphocyte preparations of genotypes indicated between 8-12 weeks of age that contained (a) IFN γ and (b) TNF α detected by flow cytometry after stimulations *ex vivo* for four hours with PMA and ionomycin. Data are values from individual mice from 5 experiments with the mean \pm SEM. (c) Representative dot plots of intracellular IL-10 staining of CD4⁺ CD3⁺ T cells isolated from the lamina propria and stimulated as above from 3 similar experiments. (d) Quantitation of the absolute numbers of IL-17A producing CD4⁺ CD3⁺ T cells in the mesenteric lymph nodes (MLN), epithelium (IEL) and lamina propria (LPL) lymphocyte preparations from WT, *Il21r*^{-/-}, *Il2*^{-/-} and *Il2 Il21r*^{-/-} mice measured by intracellular cytokine immunostaining and FACs. All samples are representative of at least 3 experiments on mice between 8-12 weeks-of-age.