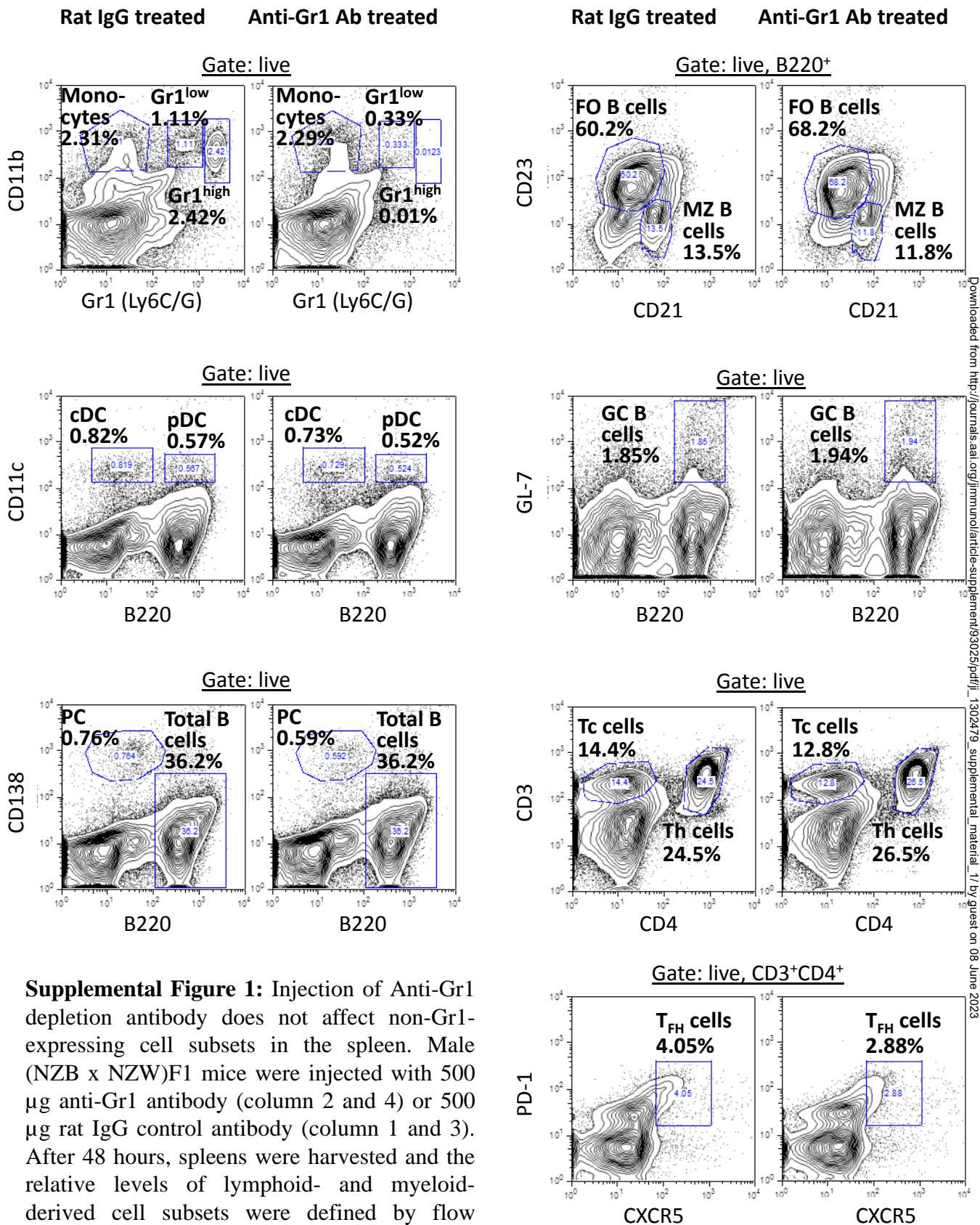
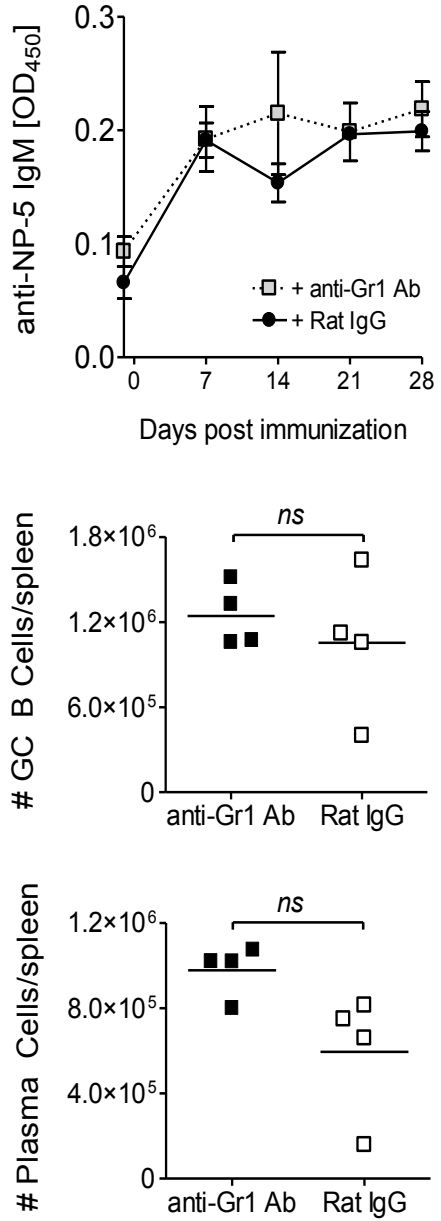


Supplemental figure 1:



Supplemental Figure 1: Injection of Anti-Gr1 depletion antibody does not affect non-Gr1-expressing cell subsets in the spleen. Male (NZB x NZW)F1 mice were injected with 500 μ g anti-Gr1 antibody (column 2 and 4) or 500 μ g rat IgG control antibody (column 1 and 3). After 48 hours, spleens were harvested and the relative levels of lymphoid- and myeloid-derived cell subsets were defined by flow cytometry.

Supplemental Figure 2



Suppl. Figure 2: The T-independent immune response in not regulated by Gr1+ cells in male (NZB x NZW)F1 mice. Male (NZB x NZW)F1 mice were immunized with NP₂₇-FICOLL/CFA on day 0. Mice were treated with depleting anti-Gr1 Ab (n = 4) or control rat IgG (n = 4) every three days starting on day -1. Serum was obtained every 7 days and tested for anti-NP antibodies (A). Total numbers of GC B cells (B) and PCs (C) were enumerated from spleens of treated mice upon sacrifice on day 28.