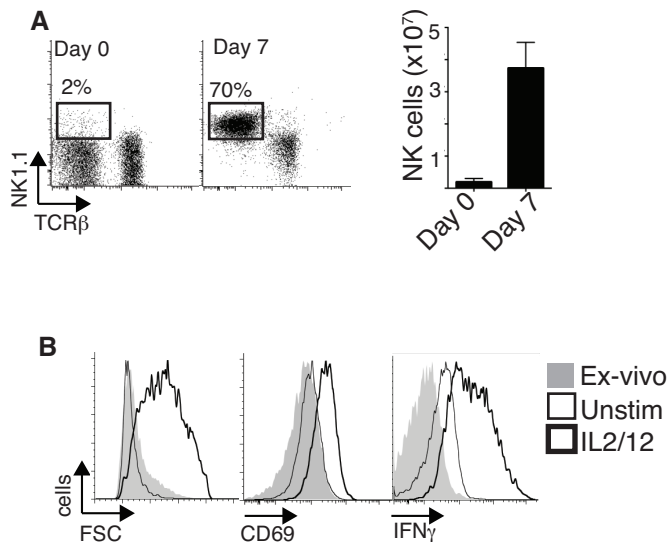


Supplemental Figure 1



Supplemental Figure 1. Expansion of splenic NK cells for metabolic analysis

(A) Analysis of the frequency (left) and numbers (right) of NK1.1+ NKp46+ TCR β - NK cells in splenocytes analysed directly ex vivo (day 0) and following 7 days culture in 25ng/ml IL15. (B) Day 7 NK cells were stimulated for 18 hours with IL2 plus IL12 or left unstimulated and analysed compared to ex vivo NK cells by flow cytometry for forward scatter and the expression of CD69 and IFN γ . Data is mean \pm S.E.M or representative of at least 4 experiments.