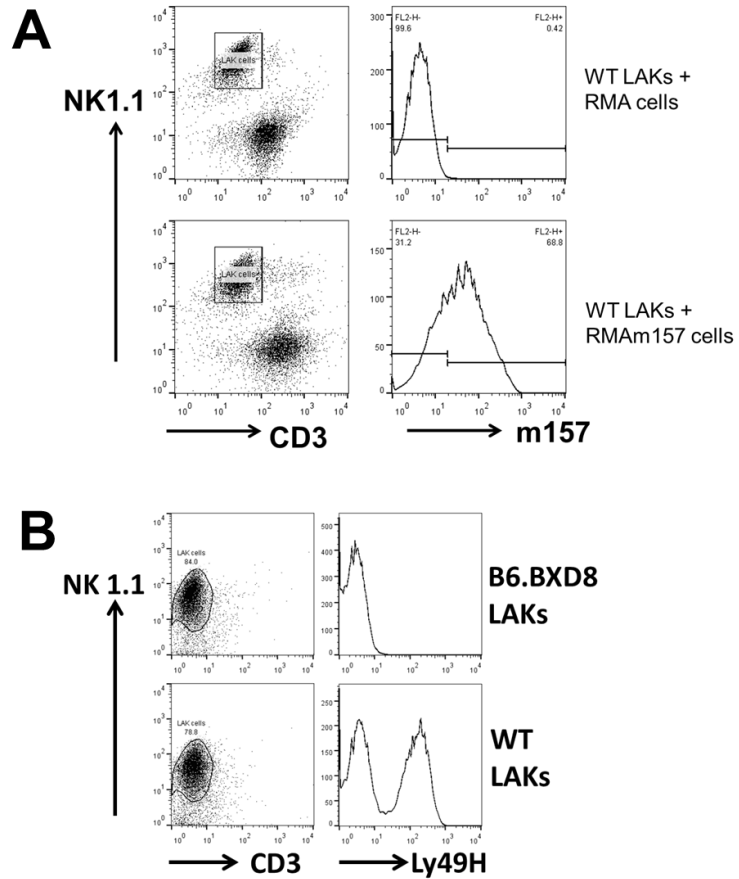


Supplemental Figure 1

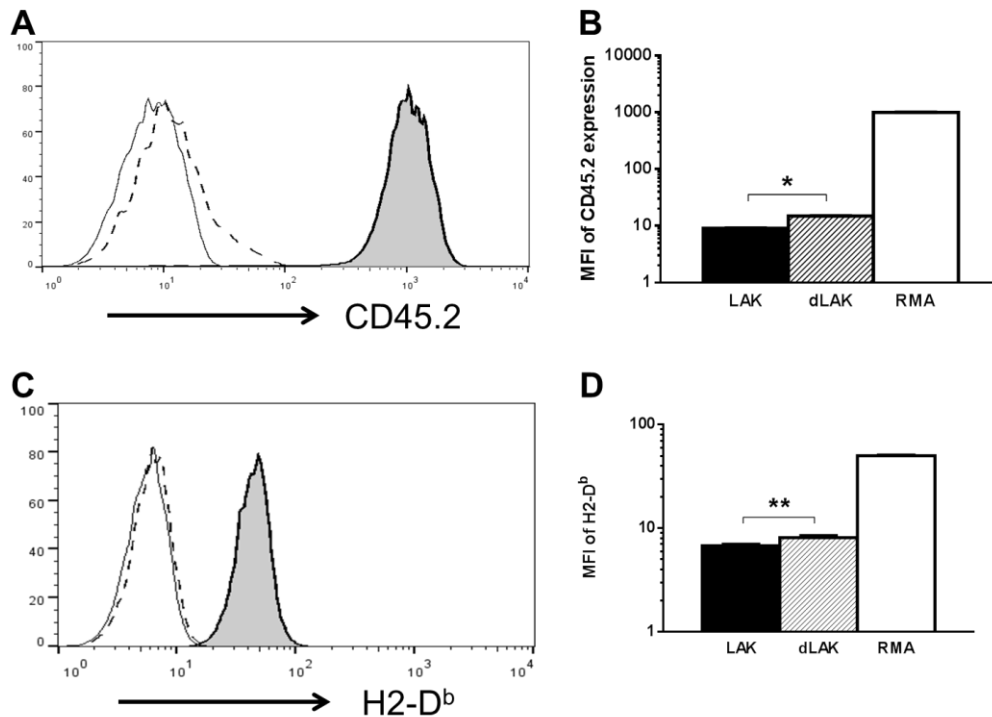


Supplemental Figure 1. Gating strategy used to assess trogocytosis by LAK cells. (A)

Representative dot plots and histograms depicting gating on NK1.1⁺, CD3⁻ LAK cells and assessment of m157 on these populations following incubation with RMA or RMAm157 cells.

(B) Representative dot plots and histograms depicting gating on NK1.1⁺, CD3⁻ LAK cells from B6.BXD8 and WT mice as well as assessment of Ly49H on these populations.

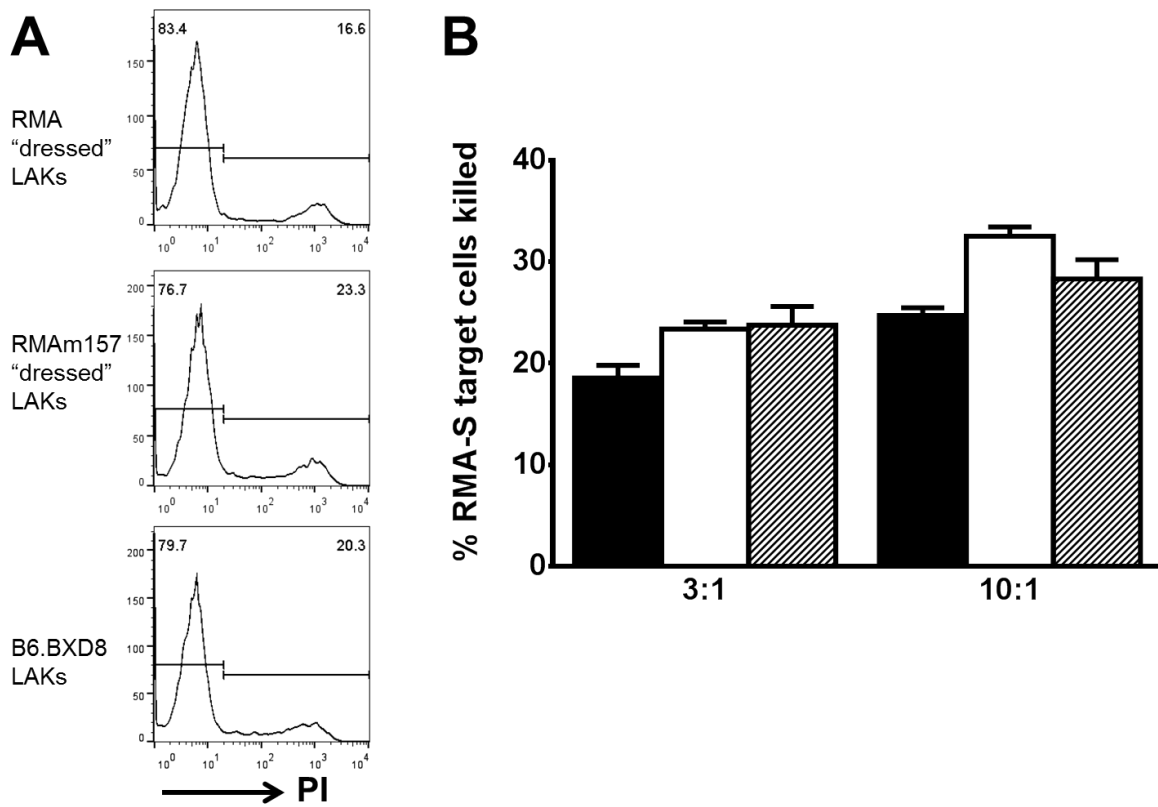
Supplemental Figure 2



Supplemental Figure 2. Acquisition of other membrane proteins by LAK cells. (A)

Representative histogram showing CD45.2 expression on RMA cells (tinted histogram), WT CD45.1 LAKs (open histogram with solid line) and CD45.1 LAK cells that had been incubated with RMA cells for 2 hours (open histogram with dashed line). (B) MFI of CD45.2 expression on CD45.1 LAKs (LAK; black, n=5), CD45.1 LAKs incubated with RMA cells (dLAK; hatched, n=5) and RMA cells (RMA; white, n=5). * $p < 0.0005$. (C) Representative histogram showing H2-D^b expression on RMA cells (filled histogram), BALB/c LAKs (open solid histogram) and BALB/c LAK cells that had been incubated with RMA cells for 2 hours (open dashed histogram). (D) MFI of H2-D^b expression on BALB/c LAKs (LAK; black, n=10), BALB/c LAKs incubated with RMA cells (dLAK; hatched, n=10) and RMA cells (RMA; white, n=10). ** $p < 0.02$.

Supplemental Figure 3



Supplemental Figure 3. The m157-dressed NK cells efficiently kill RMA-S target cells. WT IL-2 stimulated NK cells (LAKs) were incubated with RMA or RMAm157 cells and then sorted to obtain “dressed” LAKs. The sorted LAK cells were used as effector cells at 3:1 and 10:1 E:T ratios. (A) Representative histogram to evaluate killing of RMA-S target cells based on propidium iodide (PI) incorporation assessed by flow cytometry. The numbers in the histogram are the percentage of cells present in the PI⁺ and PI⁻ gates. (B) Percentage of RMA-S target cells killed at two different E:T ratios. Effector cells were sorted RMA- “dressed” LAKs (black, n=8), sorted RMAm157- “dressed” LAKs (white, n=8) or unsorted B6.BXD8 LAKs (hatched, n=8). All data are presented as the mean \pm SEM.