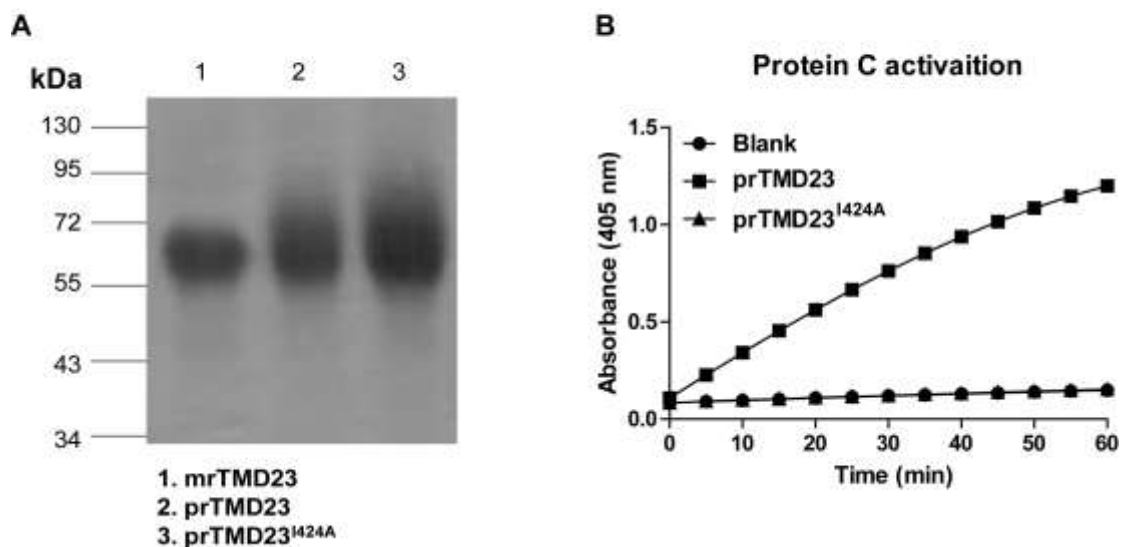


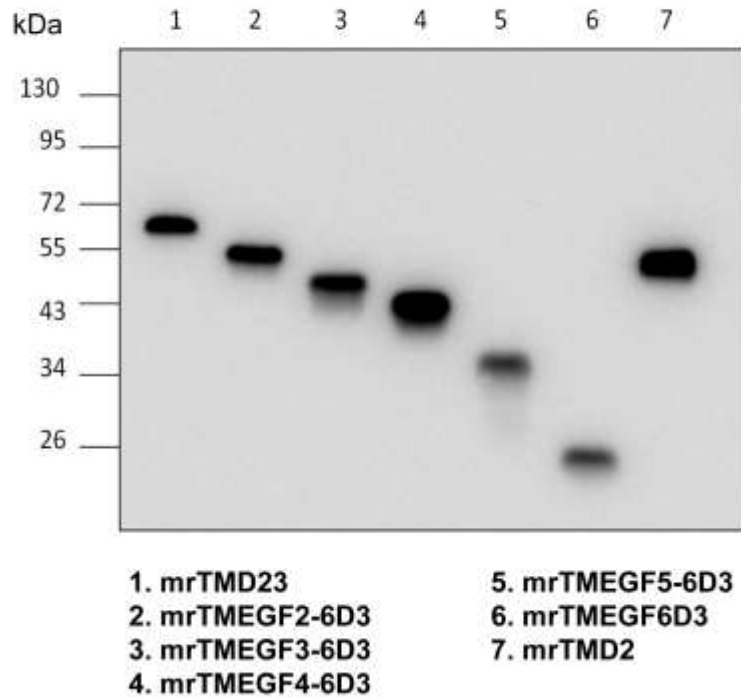
Supplemental Materials

Supplemental Figure 1



Supplemental Figure 1. (A) Coomassie Brilliant Blue staining of mrTMD23, prTMD23, and prTMD23^{I424A}. (B) prTMD23 (0.4 $\mu\text{g}/\mu\text{l}$) or prTMD23^{I424A} (0.4 $\mu\text{g}/\mu\text{l}$) was incubated with thrombin (37.5 nM) and protein C (5 $\mu\text{g}/\text{ml}$) in buffer containing 20 mM Tris (pH 7.4), 0.15 M NaCl, 2.5 mM CaCl₂, and 5 mg/mL BSA for 30 min at 37°C. Protein C activation was terminated by adding 40 μl antithrombin III (6 IU/ml) and heparin (12 IU/ml). The enzymatic activity of APC was measured with peptide substrate H-D-Lys(c-Cbo)-Pro-Arg-pNA.2AcOH (SPECTROZYME PCa 1.5 mM) at 37°C. Absorbance was measured at 405 nm.

Supplemental Figure 2



Supplemental Figure 2. Coomassie Brilliant Blue staining of mrTMD23, mrTMEGF2-6D3, mrTMEGF3-6D3, mrTMEGF4-6D3, mrTMEGF5-6D3, mrTMEGF6D3, and mrTMD2.