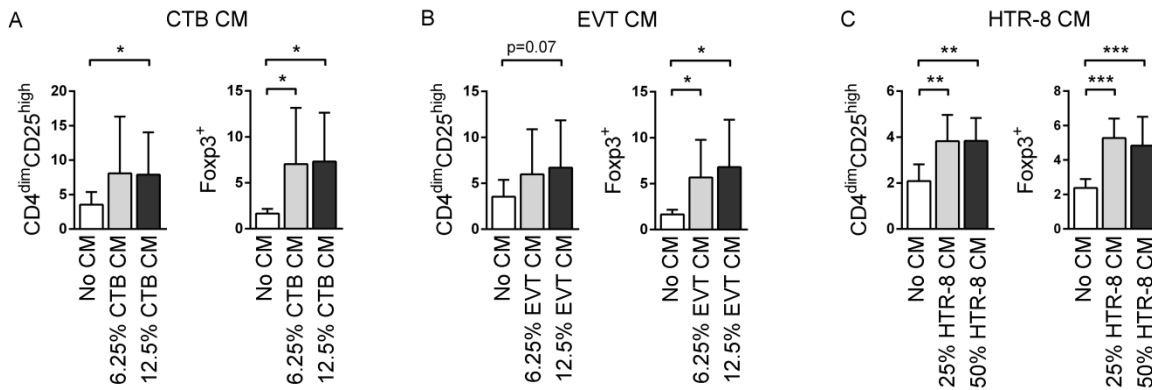


**Supplemental Table I.** Abs used for neutralization experiments, immunohistochemistry (IHC) and flow cytometry (FC).

| Antigen             | Concentration/dilution or label (for FC Abs) | Isotype     | Clone      | Manufacturer    | Application    |
|---------------------|--|-------------|------------|-----------------|----------------|
| IL-10R              | 10 µg/ml                                     | Rat IgG2a   | 3F9        | Biolegend       | Neutralization |
| M-CSF               | 1 µg/ml                                      | Mouse IgG2a | 26730      | R&D Systems     | Neutralization |
| LIF                 | 10 µg/ml                                     | Mouse IgG2b | 9824       | R&D Systems     | Neutralization |
| TGF-β1-3            | 10 µg/ml                                     | Mouse IgG1  | 1D11       | R&D Systems     | Neutralization |
| CCL18               | 10 µg/ml                                     | Mouse IgG1  | 64507      | R&D Systems     | Neutralization |
| TRAIL               | 10 µg/ml                                     | Mouse IgG1  | 75411      | R&D Systems     | Neutralization |
| <i>Isotype ctrl</i> | 10 µg/ml                                     | Rat IgG2a   | RTK2758    | Biolegend       | Neutralization |
| <i>Isotype ctrl</i> | 10 µg/ml                                     | Mouse IgG1  | 11711      | R&D Systems     | Neutralization |
| <i>Isotype ctrl</i> | 1 µg/ml                                      | Mouse IgG2a | 20102      | R&D Systems     | Neutralization |
| <i>Isotype ctrl</i> | 10 µg/ml                                     | Mouse IgG2b | 20116      | R&D Systems     | Neutralization |
| M-CSF               | 1:25   | Mouse IgG1  | 2D10       | Abnova          | IHC            |
| GM-CSF              | 1:100  | Mouse IgG1  | 3209       | R&D system      | IHC            |
| IL-10               | 1:100  | Mouse IgG2b | E-10       | Santa Cruz      | IHC            |
| CD14                | 1:100  | Mouse IgG2b | 11B5       | Santa Cruz      | IHC            |
| CD163               | 1:200  | Mouse IgG1  | EDHu-1     | AbD Serotec     | IHC            |
| CD127               | PerCP-Cy5.5                                  | Mouse IgG1  | HIL-7R-M21 | BD              | FC             |
| CD14                | PC7  | Mouse IgG2a | RMO52      | Beckman Coulter | FC             |
| CD163               | PE   | Mouse IgG1  | GHI/61     | BD              | FC             |
| CD206               | APC  | Mouse IgG1  | 19.2       | BD              | FC             |
| CD209               | PerCP-Cy5.5                                  | Mouse IgG2b | DCN46      | BD              | FC             |
| CD25                | APC  | Mouse IgG1  | 2A3        | BD              | FC, Sorting    |
| CD25                | PE-Cy7                                       | Mouse IgG1  | 2A3        | BD              | FC             |
| CD39                | PE   | Mouse IgG2b | TU66       | BD              | FC             |
| CD4                 | FITC   | Mouse IgG1  | SK3        | BD              | FC             |
| CD4                 | PE-Cy7                                       | Mouse IgG1  | SK3        | BD              | Sorting        |
| CD4                 | v450   | Mouse IgG1  | RPA-T4     | BD              | FC             |
| CD45                | eFluor 450                                   | Mouse IgG1  | HI30       | eBioscience     | FC             |
| CD45                | Pacific blue                                 | Mouse IgG1  | HI30       | eBioscience     | FC             |
| CD45R0              | PE-Cy7                                       | Mouse IgG2a | UCHL1      | BD              | FC             |
| CD45RA              | FITC   | Mouse IgG1  | L48        | BD              | FC             |
| CD45RA              | PerCP-Cy5.5                                  | Mouse IgG2b | HI100      | eBioscience     | FC             |
| CD69                | APC-Cy7                                      | Mouse IgG1  | FN50       | BD              | FC             |
| CTLA-4              | APC  | Mouse IgG2a | BNI3       | BD              | FC             |
| CTLA-4              | PE   | Mouse IgG2a | BNI3       | BD              | FC             |
| Foxp3               | FITC   | Rat IgG2a   | PCH101     | eBioscience     | FC             |
| Foxp3               | PE   | Rat IgG2a   | PCH101     | eBioscience     | FC             |
| GATA-3              | PE   | Rat IgG2b   | TWAJ       | eBioscience     | FC             |
| HLA-DR              | PerCP  | Mouse IgG2a | G46-6      | BD              | FC             |
| ICAM-3              | FITC   | Mouse IgG2b | TU41       | BD              | FC             |
| Roryt               | APC  | Rat IgG2a   | AFKJS-9    | eBioscience     | FC             |
| T-bet               | eFluor 660                                   | Mouse IgG1  | eBio4B10   | eBioscience     | FC             |
| <i>Isotype ctrl</i> | APC  | Rat IgG2a   | eBR2a      | eBioscience     | FC             |
| <i>Isotype ctrl</i> | APC  | Mouse IgG1  | X40        | BD              | FC             |
| <i>Isotype ctrl</i> | eFluor 660                                   | Mouse IgG1  | P3.6.2.8.1 | eBioscience     | FC             |
| <i>Isotype ctrl</i> | FITC   | Mouse IgG2b | 27-35      | BD              | FC             |
| <i>Isotype ctrl</i> | PC7  | Mouse IgG2a | 7T4-1F5    | Beckman Coulter | FC             |
| <i>Isotype ctrl</i> | PE   | Rat IgG2a   | eBR2a      | eBioscience     | FC             |
| <i>Isotype ctrl</i> | PE   | Rat IgG2b   | eB149/10H5 | eBioscience     | FC             |
| <i>Isotype ctrl</i> | PE   | Mouse IgG1  | X40        | BD              | FC             |
| <i>Isotype ctrl</i> | PE-Cy7                                       | Mouse IgG1  | MOPC-21    | BD              | FC             |
| <i>Isotype ctrl</i> | PerCP-Cy5.5                                  | Mouse IgG2b | 27-35      | BD              | FC             |



### Supplemental Figure 1

#### Trophoblast cells contribute to the expansion of Treg cells. Conditioned medium (CM)

from isolated first trimester placental cytotrophoblast (CTB) (A), extravillous trophoblast (EVT) cells (B), or from the trophoblast cell line HTR-8/SVneo (HTR-8) (C) induced an increased proportion of CD4<sup>dim</sup>CD25<sup>high</sup> and Foxp3<sup>+</sup> Treg cells within the CD4<sup>+</sup> T cell population. In all experiments, CD4<sup>+</sup> T cells isolated from healthy non-pregnant women were cultured for five days with CM at the indicated concentrations and were then analyzed by flow cytometry. Data was analyzed with Student's paired t-test. The graphs show the mean + SD from nine individual experiments. \*  $p \leq 0.05$ , \*\*  $p \leq 0.01$ , \*\*\*  $p \leq 0.001$ .



concentrations. Flow cytometry data was analyzed with repeated measures ANOVA and Sidak's multiple comparison test (**A** and **B**, upper panels; **C**) and cytokine data with Wilcoxon matched-pairs test (**A** and **B**, lower panels). The graphs show the mean + SD (upper panels) or the median (lower panels) of eight individual experiments (**A** and **B**). \*  $p \leq 0.05$ , \*\*  $p \leq 0.01$ , \*\*\*  $p \leq 0.001$ .