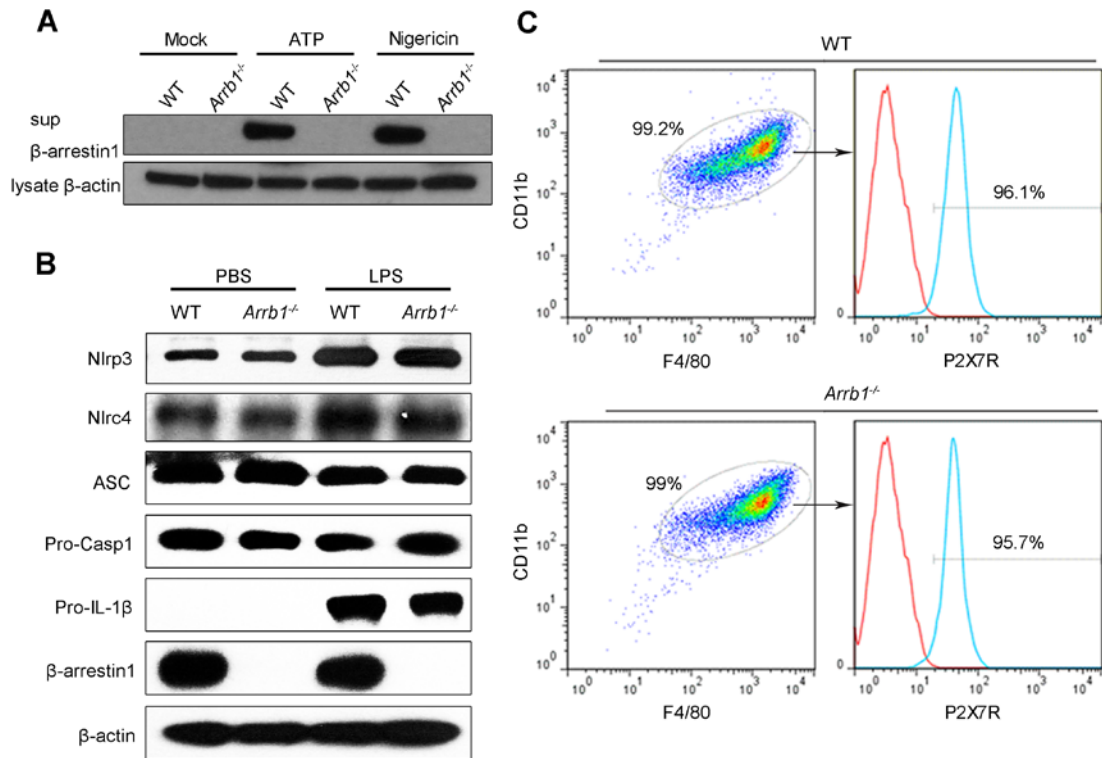
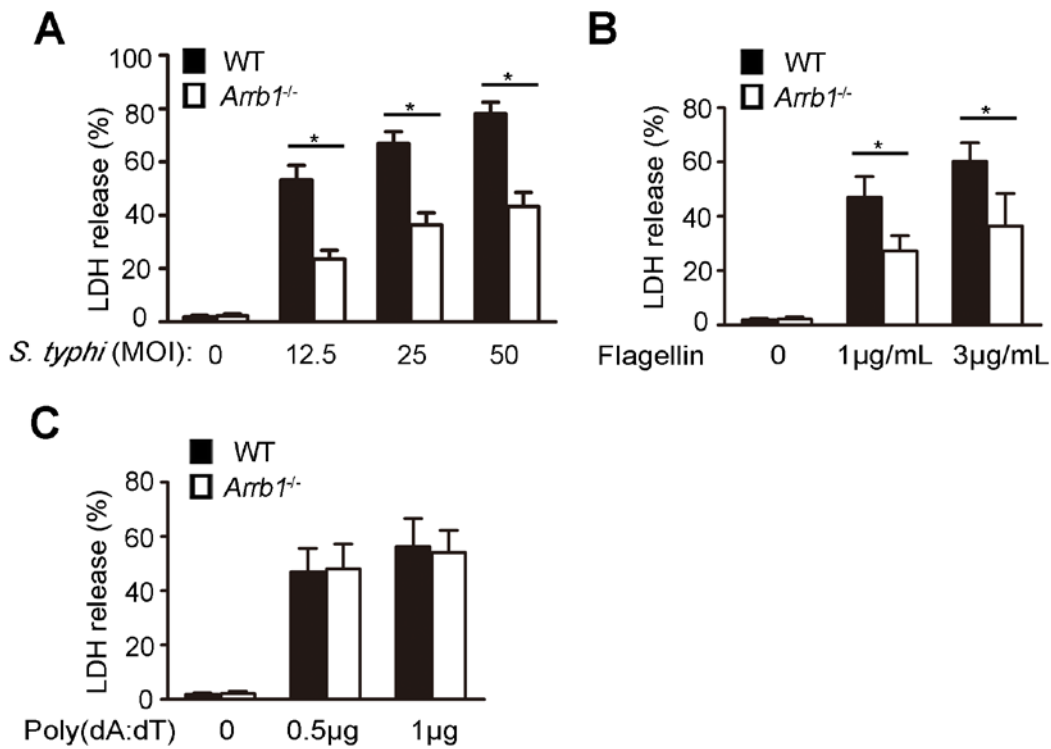


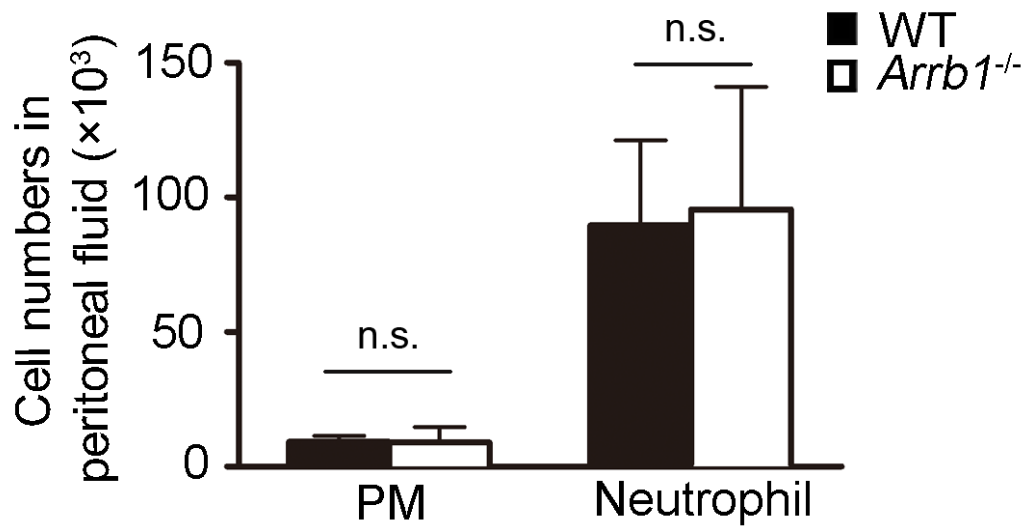
Supplemental Figure 1. IL-1 β secretion is decreased in β -arrestin1-deficient BMDCs. WT and β -arrestin1-deficient BMDCs were stimulated with LPS for the different lengths of time. Production of IL-6 (A), TNF- α (B), IL-23 (C) and IL-1 β (D) in the supernatant. * $P < 0.05$ (Student's t -test). The data represent at least three experiments (mean \pm SD).



Supplemental Figure 2, Expression of NLRP3 and NLRC4 inflammasome components and P2X7R are not affected in β -arrestin1 knockout macrophages. **A.** Immunoblot analysis of β -arrestin1 in the supernatants of peritoneal macrophages from WT and *Arrb1*^{-/-} mice after stimulated with 5 mM ATP (30 min) or 20 μ M Nigericin (30 min). **B.** WT and β -arrestin1-deficient peritoneal macrophages were left un-stimulated or stimulated with LPS for 4 hours. Immunoblot analysis of NLRP3 and NLRC4 inflammasome components. **C.** Peritoneal macrophages from WT and *Arrb1*^{-/-} mice were gated with the macrophage markers CD11b and F4/80. The gated macrophages were then detected for P2X7R expression. Data are representative of three independent experiments.



Supplemental Figure 3, LDH release is impaired in *Arrb1*^{-/-} macrophages during NLRC4, but not AIM2 inflammasome activation. LDH release by LPS-primed peritoneal macrophages from WT mice or *Arrb1*^{-/-} mice infected with various dilutions of *S. typhimurium* for 2 h (A), incubated with Flagellin for 6 h (B) and transfected with poly(dA:dT) for 6 h (C). **P* < 0.05 (Student's *t*-test). The data represent at least three experiments (mean ± SD).



Supplemental Figure 4, Peritoneal macrophages and neutrophils influx in WT and *Arrb1*^{-/-} mice are similar before stimulation. Peritoneal macrophages and neutrophils were collected and calculated as total cells multiplied by percent of CD11b and F4/80 double-positive cells (PMs) and GR-1 positive cells (neutrophils). PM, peritoneal macrophage. n.s., not significant. Data are representative of at least three experiments (mean \pm SD).