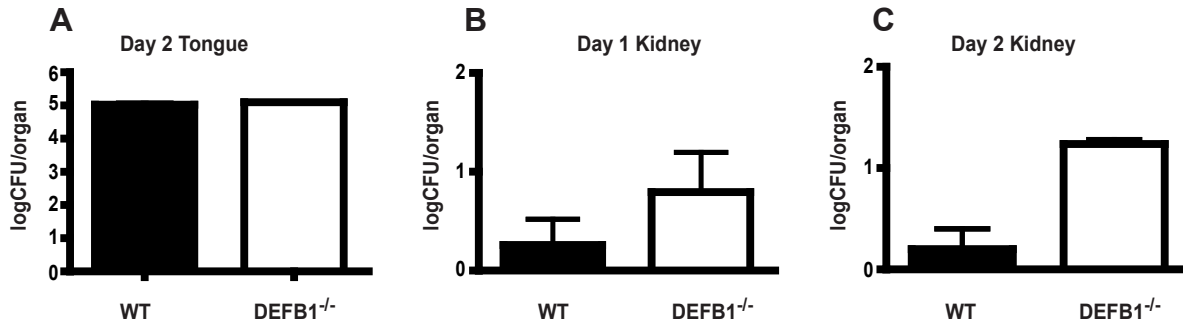


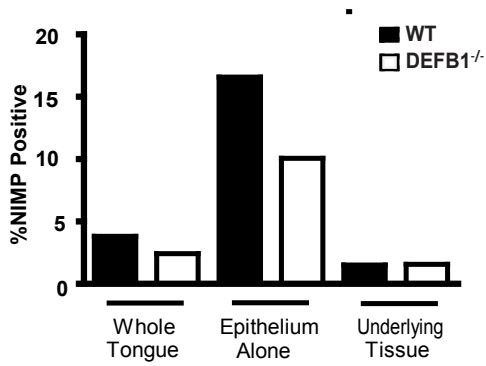
Table S1. Reverse transcriptase-polymerase chain reaction (RT-PCR) mouse primers

Target		Sense/anti-sense (5-3)	Size (bp)
defB2-	Forward	AAGTATTGGATACGAAGCAG	83
	Reverse	TGGCAGAAGGAGGACAAATG	
defB3-	Forward	GCATTGGCAACACTCGTCAGA	85
	Reverse	CGGGATCTTGGTCTTCTCTATT	
defB4-	Forward	GCAGCCTTTACCCAAATTATC	102
	Reverse	ACAATTGCCAATCTGTGCGAA	
defB14-	Forward	GGACGCATTCTACCAAAAA	89
	Reverse	TCTTCCTTTCCAAGGCAGTT	
Camp-	Forward	GTGGGGAGAAGATTGGTGAA	116
	Reverse	GAATCCAGAAACAGCCCAAG	
GAPDH-	Forward	CGTCCCGTAGACAAAATGGT	177
	Reverse	GAATTTGCCGTGAGTGGAGT	
IL-1 β -	Forward	CAACCAACAAGTGATATTCTCCATG	152
	Reverse	GATCCACACTCTCCAGCTGCA	
IL-17a-	Forward	AGCTCGACCACCACATGAAT	104
	Reverse	AGCATCTTCTCGACCCTGAA	
IL-17f-	Forward	CAAAACCAGGGCATTCTGT	81
	Reverse	GGGGTCTCGAGTGATGTTGT	
Cxcl1-	Forward	AACGGAGAAGAAGACAGACTG	102
	Reverse	GACGAGACCAGGAGAAACAG	
IL-18-	Forward	ACAAC TTTGGCCGACTTCAC	128
	Reverse	GGGT TCACTGGCACTTTGAT	
IL-6-	Forward	CCGGAGAGGAGACTTCACAG	166
	Reverse	TTCTGCAAGTCATCATCGT	
Nlrc4-	Forward	CTGGAAAAGGATGGGAATGA	89
	Reverse	CCAAGGCAGCATCAATGTAG	
Nlrp3-	Forward	TCCACAATTCTGACCCACAA	92
	Reverse	ACCTCACAGAGGGTCACCAC	



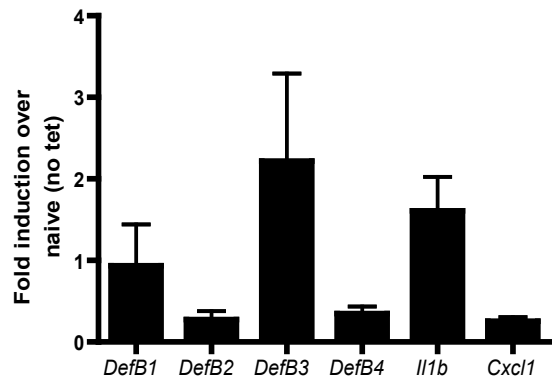
Supplemental Figure S1. Early dissemination of *Candida* observed in absence of mBD1.

(A) Tongue CFU was determined in WT and *DefBI*^{-/-} mice 2 days post oral infection with *Candida albicans*. Fungal burdens were measured in the kidneys of mice (B) 1 day and (C) 2 days of infection.



Supplemental Figure S2. Decreased neutrophil infiltration into the epithelium of mBD1 deficient hosts.

Neutrophil infiltration into the tongue was quantified using the MetaMorph Software. Shown are percent ratios of NIMP-positive pixels over total pixels for the whole tongue, epithelium alone, and submucosa alone. Graph represents images presented in Figure 2.



Supplemental Figure S3. Tetracycline treatment has minimal impact on innate gene expression.

mRNA was extracted from intestinal mucosal tissue from either untreated or tetracycline treated mice 3 days post scoring and mock infection with sterile PBS. Values are expressed as fold induction over naïve (non-tet).